

GEOTECHNICAL ENGINEERING

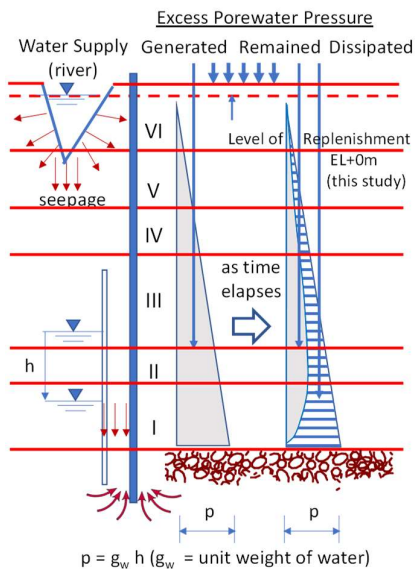
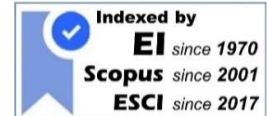
Journal of the



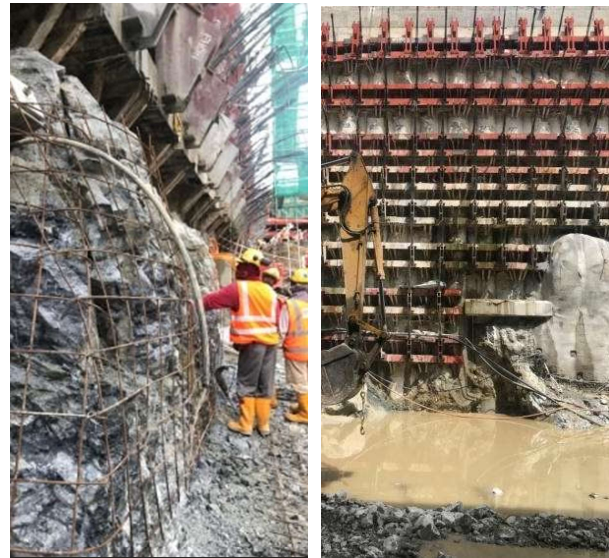
Sponsored by



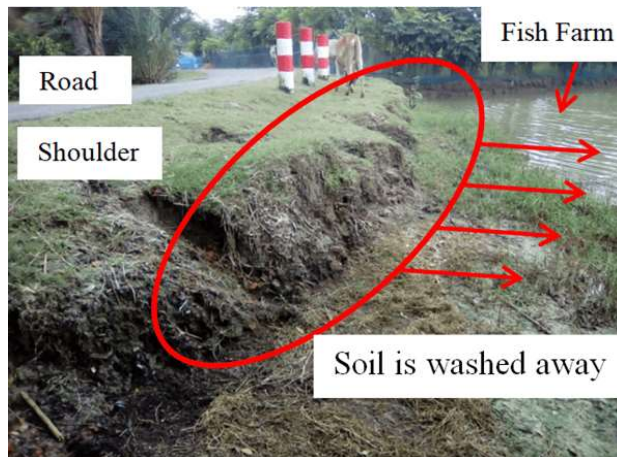
AIT
Asian Institute of Technology



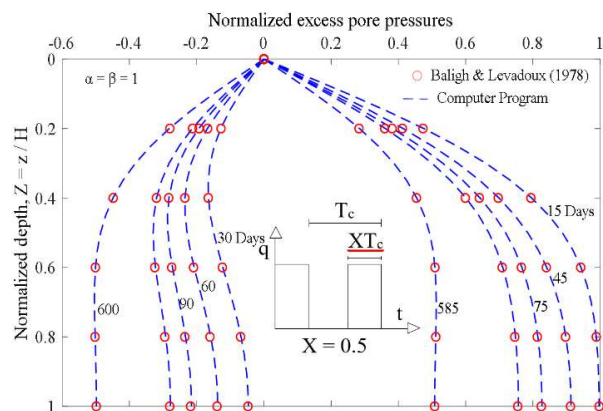
Back Analyses of Historical Ground Subsidence Induced by the Lowering of Groundwater Table, after R.N. Hwang and Z.C. Moh (2020).



Supporting the Observational Approach in Construction through Bayesian Analysis, after C.W. Boon and L.H. Ooi (2020).



Causes of Damage of Rural Road in Coastal Areas of Bangladesh, after Alam et al. (2020).



A Numerical Approach to Cyclic Consolidation of Saturated Clays, after Haq et al. (2020).

GEOTECHNICAL ENGINEERING

EDITOR-IN-CHIEF

2020 - Present

Dr. Kuo Chieh Chao
Asian Institute of Technology
Thailand

2010 - 2019

Dr. Teik Aun Ooi (Malaysia)
Prof. A. S. Balasubramaniam (Australia)

EDITORIAL ADVISERS

Prof. Za-Chieh Moh (Taiwan)

Dr. Teik Aun Ooi (Malaysia)

Prof. A. S. Balasubramaniam (Australia)

Dr. Edward W. Brand (U.K.)

Prof. Kwet Yew Yong (Singapore)

Prof. Harry G. Poulos (Australia)

Dr. Chin-Der Ou (Taiwan)

Dr. Suttisak Soralump (Thailand)

Dr. Wen Hui Ting (Malaysia)

Dr. John Chien-Chung Li (Taiwan)

Dr. Chung Tien Chin (Taiwan)

Prof. Pedro Seco E Pinto (Portugal)

Prof. Dennes T. Bergado (Philippines)

EDITORIAL PANEL

Prof. Paulus P. Rahardjo
Parahyangan Catholic University
Indonesia

Dr. Limin Zhang
Hong Kong University of
Science and Technology
Hong Kong

Dr. Erwin Oh
Griffith University
Australia

Dr. Dominic Ong
Griffith University
Australia

Dr. Apiniti Jotisankasa
Kasetsart University
Thailand

Dr. Jie-Ru Chen
National Chi Nan University
Taiwan

Dr. Phung Duc Long
Long GeoDesign
Vietnam

Dr. Darren Chian
National University of
Singapore
Singapore

Dr. Avirut Puttiwongrak
Asian Institute of Technology
Thailand

GEOTECHNICAL ENGINEERING

Paper Contribution, Technical Notes, and Discussions

Geotechnical Engineering is the official journal of the Southeast Asian Geotechnical Society and the Association of Geotechnical Societies in Southeast Asia. It is published four times a year in March, June, September, and December and is free to members of the Society. Please visit our website at <http://www.seags.ait.ac.th> for the membership information.

SEAGS & AGSSEA encourage the submission of scholarly and practice-oriented articles to its journal. The journal is published quarterly. Both sponsors of the journal, the Southeast Asian Geotechnical Society and the Association of Geotechnical Societies in Southeast Asia, promote the ideals and goals of the International Society for Soil Mechanics and Geotechnical Engineering in fostering communications, developing insights and enabling the advancement of the geotechnical engineering discipline. Thus, the publishing ethics followed is similar to other leading geotechnical journals. The standard ethical behavior of the authors, the editor, and his editorial panel, the reviewers, and the publishers is followed.

Before you submit an article, please review the guidelines stated herein for the manuscript preparation and submission procedures. The paper template is available upon request.

Geotechnical Engineering Journal accepts submissions via electronic. The manuscript file (text, tables, and figures) in both words and pdf format, together with the submission letter, should be submitted to the Secretariat and copied to the Chief Editor of Geotechnical Engineering Journal. Email: s-a-journal@ait.ac.th.

The guidelines for authors are as follows:

1. The manuscript including abstract of not more than 150 words and references must be typed in Times New Roman 9 on one side of A4 paper with a margin of 25 mm on each side. The abstract should be written clearly stating the purpose, the scope of work, and procedure adopted together with the major findings including a summary of the conclusions.
2. The paper title must not exceed 70 characters including spaces.
3. The maximum length of papers in the print format of the Journal is 12 two-column pages in single-spaced in Times New Roman 9 including figures and tables. A Journal page contains approximately 1,040 words. Authors can approximate manuscript length by counting the number of words on a typical manuscript page and multiplying that by the number of total pages (except for tables and figures). Add word-equivalents for figures and tables by estimating the portion of the journal page each will occupy when reduced to fit on a 160 mm x 240 mm journal page. A figure reduced to one-quarter of a page would be 260 word-equivalents. When reduced, the figure must be legible and its type size no smaller than 6 point font (after reduction).
4. Figures: Line art should be submitted in black ink or laser printed; halftones and color should be original glossy art. Figures should be submitted at the final width, i.e., 90 mm for one column and 185 mm for two columns. The font of the legends should be in Times New Roman and should use capital letters for the first letter of the first word only and use lower case for the rest of the words. Background screening and grids are not acceptable.
5. Each table must be typed on one side of a single sheet of paper.
6. All mathematics must be typewritten and special symbols identified. Letter symbols should be defined when they first appear.
7. The paper must have an introduction and end with a set of conclusions.
8. Practical applications should be included, if appropriate.
9. If experimental data and/or relations fitted to measurements are presented, the uncertainty of the results must be stated. The uncertainty must include both systematic (bias) errors and imprecisions.
10. Authors need not be Society members. Each author's full name, Society membership grade (if applicable), present title and affiliation, and complete mailing address must appear as a footnote at the bottom of the first page of the paper.
11. Journal papers submitted are subject to peer review before acceptance for publication.

12. Each author must use SI (International System) units and units acceptable in SI. Other units may be given in parentheses or in an appendix.
13. A maximum of five keywords should be given.
14. References

American Petroleum Institute (API) (1993). Recommended Practice for Planning, Designing, and Constructing Fixed Offshore Platforms – Working Stress Design, API Recommended Practice 2AWSD (RP 2A-WSD), 20th edition, 1993, p 191.

Earth, J.B., and Geo, W.P. (2011). “Asian Geotechnical amongst Authors of Conference Publications,” Proceedings of Int. Conference on Asian Geotechnical, publisher, city, pp 133-137.

Finn WDL and Fujita N. (2002). “Piles in liquefiable soils: seismic analysis and design issues,” Soil Dynamics and Earthquake Engineering, 22, Issues 9-12, pp 731-742.
15. Discussions on a published paper shall be made in the same format and submitted within six months of its appearance and closing discussion will be published within twelve months.

For additional information, please write to:

Dr. Kuo Chieh Chao

Hon. Secretary-General

Southeast Asian Geotechnical Society

Email: s-a-journal@ait.ac.th

Website: <http://www.seags.ait.ac.th>

Ir. Peng Tean SIN

Hon. Secretary-General

Association of Geotechnical Societies in Southeast Asia

Email: pengtean@gmail.com

Website: <http://www.agssea.org>

GEOTECHNICAL ENGINEERING

TABLE OF CONTENTS

| List of Papers | Page |
|--|-------------|
| 1. Supporting the Observational Approach in Construction through Bayesian Analysis <i>By C.W. Boon and L.H. Ooi</i> | 1 - 6 |
| 2. Effect of Shape of Footing on Coefficient of Elastic Uniform Compression of Polypropylene Fiber Reinforced Fine Sand <i>By C.N.V. Satyanarayana Reddy and G.V. Usha Rani</i> | 7 - 10 |
| 3. Numerical Analysis for Appropriate Buried Depth of Cold-Proof Drainage Hole of a Tunnel <i>By Zhao Mao-Long and Zhu Wei</i> | 11 - 17 |
| 4. Microstructural Change of Clay under Compression <i>By Riqing Xu, Jiaqi Jiang, Yuming Huang, and Jianlin Yu</i> | 18 - 24 |
| 5. Reliability of ULSD Theory in Geotechnics <i>By P. Koudelka</i> | 25 - 37 |
| 6. Cyclic Parameters of Gas Oil Contaminated Fine Soils <i>By Fatemeh. Mir Mohammad Hosseini, S. M. Mir Mohammad Hosseini, and Hamidreza Jahangard</i> | 38 - 45 |
| 7. Study on the Failure Pattern of Layered Soil using Finite Element Method <i>By Moumita Goswami and Arunav Chakraborty</i> | 46 - 51 |
| 8. A Numerical Approach to Cyclic Consolidation of Saturated Clays <i>By Shay Haq, Tian Ho Seah, Kuo-Chieh Chao, and Cholachat Rujikiatkamjorn</i> | 52 - 60 |
| 9. CPT & SPT Tests in Assessing Liquefaction Potential <i>By Ripon Hore, Sudipta Chakraborty, M. R. Arefin, and M. A. Ansary</i> | 61 - 68 |
| 10. Properties of an Unsaturated Residual Soil behind a Failed Slope in Sri Lanka <i>By N. Vasanthan and S.A.S. Kulathilaka</i> | 69 – 78 |
| 11. Improvement of Soil Cohesion Using Microbial Activity <i>By Yustian Heri Suprpto, Budi Susilo Soepandji, Wiwik Rahayu, and Puspita Lisdiyanti</i> | 79 - 82 |
| 12. Estimation of Vibration Parameter for Blast Based on Shear Strength <i>By Ranjan Kumar, Pravin Prakash Yerunkar, and Kapilesh Bhargava</i> | 83 - 88 |
| 13. Solution for Partially Penetrated Vertical Drain with Anchor Plate <i>By Trong Nghia-Nguyen, Le Thanh Cuong, Le Gia Lam, Phuoc H. Dang, and Phu-Cuong Nguyen</i> | 89 - 97 |
| 14. Post-liquefaction Settlement Evaluation Method of Non-plastic Silty Sand <i>By Mei Hsun Chang, Jing Wen Chen, and Wei Feng Lee</i> | 98 - 107 |
| 15. End-Bearing Granular Pile-Effect of Non-Linearity of Soil and Granular Pile <i>By J.K. Sharma and Pooja Gupta</i> | 108 - 121 |
| 16. Hypoplastic Model with Intergranular Strain: Dependence on Grain Properties and Initial State <i>By S. Nagula and Ing. J. Grabe</i> | 122 - 129 |
| 17. Effect of Permeability Variation in Vacuum Consolidation <i>By Van-Tuan Vu, Yu-you Yang, and Anh-Tuan Vu</i> | 130 - 134 |
| 18. Test Equipment and Application of Compression Properties of MSW <i>By Gang Zeng, Feng Quan, Dan Hu, Jing Wang, Jun Ma, and Xinminnan Hui</i> | 135 - 138 |

| | |
|---|-----------|
| 19. The Durability of Soil-Cement Columns in High Sulphate Environments <i>By Pham Van Ngoc, Brett Turner, Jinsong Huang, and Richard Kelly</i> | 139 - 145 |
| 20. Causes of Damage of Rural Road in Coastal Areas of Bangladesh <i>By Md. Jahangir Alam, Mohammed Emdadul Karim, and Md. Shamsul Hoque</i> | 146 - 155 |
| 21. Laboratory Study on Natural Fibre Amended Fly Ash as an Expansive Soil Stabilizer <i>By B. Soundara, S. Selvakumar, and S. Bhuvaneshwari</i> | 156 - 160 |
| 22. Soil Model Effects on Deep Excavations Analysis <i>By S. Ghaffarpour Jahromi and H. Ataeeian Dehkordi</i> | 161 - 168 |
| 23. A Review on Rock Slope Stability: Failure Mechanisms, Stabilization Techniques and Implications for Mining Engineering <i>By William Ngaha Tiedeu, Deyi Jiang, Jie Chen, and Jinyang Fan</i> | 169 - 180 |
| 24. Permeabilities of Cement-Treated Geomaterials Subjected to Varying Water-Cement Ratios <i>By Hai-lei Kou, Meng Yang, Wang-chun Zhang, Jing-kui Wang, and Qing-ming Song</i> | 181 - 184 |
| 25. Tunisian Phosphogypsum Challenges <i>By Hajer Maazoun and Mounir Bouassida</i> | 185 - 194 |
| 26. Shaft Capacity Assessment of Recharge Impulse Technology <i>By Wafi Bouassida, Essaieb Hamdi, Mounir Bouassida, and Yuri Kharine</i> | 195 - 199 |
| 27. Back Analyses of Historical Ground Subsidence Induced by the Lowering of Groundwater Table <i>By R.N. Hwang and Z.C. Moh</i> | 200 - 208 |
| 28. Deliberate Failure of Slurry Trench Excavations in Soft Clay <i>By E. DiBiagio, F. Myrvoll, A.S. Balasubramaniam, J.M.N.S. Jayasiri, G. Aas, and E. Oh</i> | 209 - 223 |

Cover Photographs

1. Back Analyses of Historical Ground Subsidence Induced by the Lowering of Groundwater Table
By R.N. Hwang and Z.C. Moh
2. Supporting the Observational Approach in Construction through Bayesian Analysis
By C.W. Boon and L.H. Ooi
3. Causes of Damage of Rural Road in Coastal Areas of Bangladesh
By Md. Jahangir Alam, Mohammed Emdadul Karim, and Md. Shamsul Hoque
4. A Numerical Approach to Cyclic Consolidation of Saturated Clays
By Shay Haq, Tian Ho Seah, Kuo-Chieh Chao, and Cholachat Rujikiatkamjorn