

Geotechnical Engineering Journal of the SEAGS & AGSSEA

Vol. 52 No. 3 September 2021

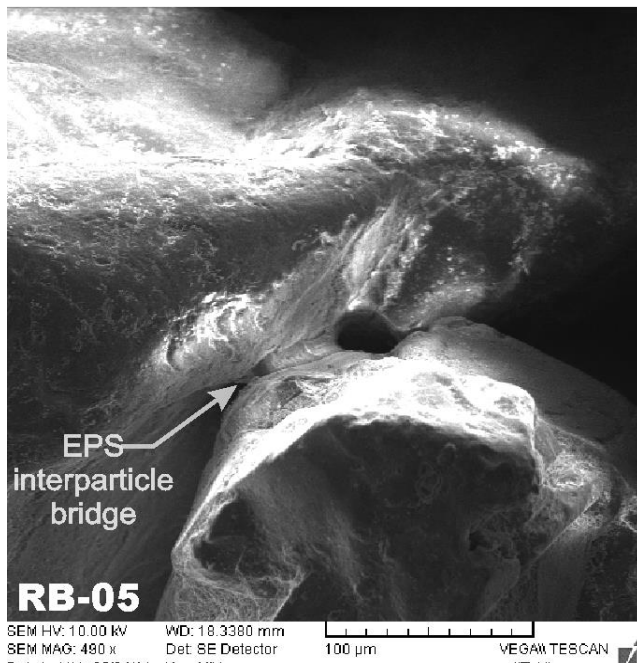
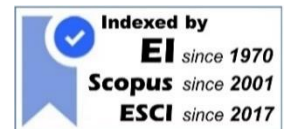
ISSN 0046-5828

GEOTECHNICAL ENGINEERING

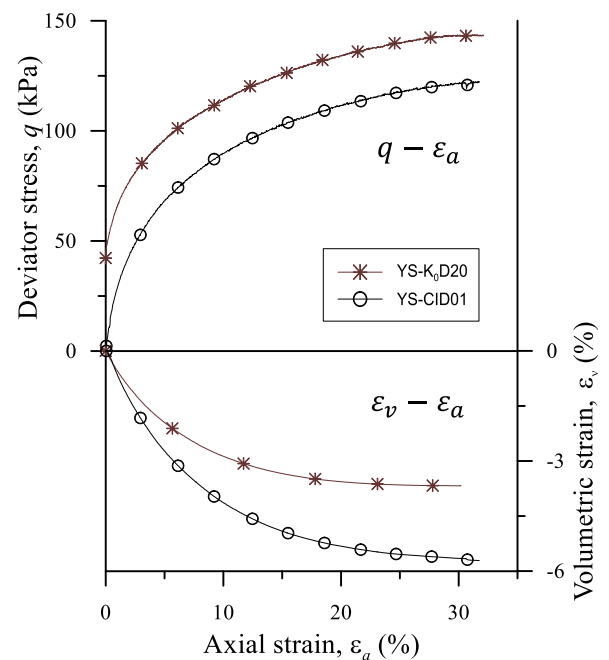
Journal of the



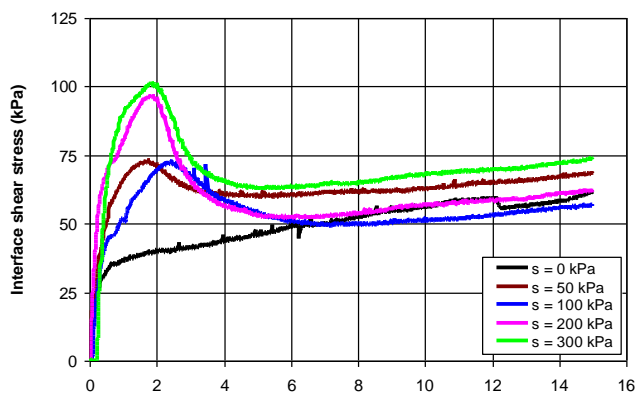
Sponsored by



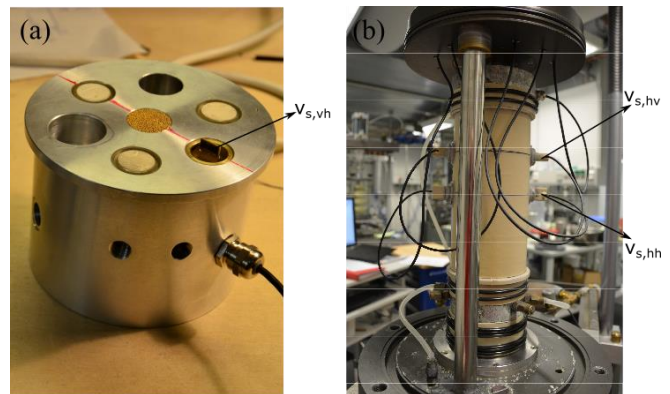
Influence of Microbial Activities in Reducing Erodibility of Sand, after Datta and Roy (2021)



Development of a Stress-Strain Path Controlled Triaxial Apparatus to Understand the Behaviour of Silty Sand, after Rabbi et al. (2021)



Stress-Strain and Deformation Characteristics of an Unsaturated Soil-Cement Interface under Different Overburden Stresses and Grouting Pressures, after Hossain and Yin (2021)



Influence of the Sample Preparation on the Mechanical Characteristics of Hostun Sand, after Gu et al. (2021)

GEOTECHNICAL ENGINEERING

EDITOR-IN-CHIEF

Dr. Kuo Chieh Chao
Asian Institute of Technology
Thailand

ASSOCIATE EDITORS

Dr. Darren Siau Chen Chian
National University of Singapore
Singapore

Dr. Viroon Kamchoom
King Mongkut's Institute of Technology Ladkrabang
Thailand

EDITORIAL ADVISERS

Prof. Za-Chieh Moh (Taiwan)

Prof. Mary Ann Q. Adajar (Philippines)

Prof. A. S. Balasubramaniam (Australia)

Prof. Chun Fai Leung (Singapore)

Dr. Teik Aun Ooi (Malaysia)

Dr. Chung-Tien Chin (Taiwan)

Prof. Kwet Yew Yong (Singapore)

Prof. Chih-Wei Lu (Taiwan)

Dr. Andy Y.F. Leung (Hong Kong)

Prof. Noppadol Phienwej (Thailand)

Prof. Widjojo A. Prakoso (Indonesia)

Dr. Suttisak Soralump (Thailand)

Mr. Junichi Yamazaki (Japan)

Dr. Duc Long Phung (Vietnam)

Ir. Liew Shaw Shong (Malaysia)

EDITORIAL REVIEWERS

Dr. Dominic Ong
Griffith University
Australia

Dr. Leonard Lim
University Malaysia Sarawak
Malaysia

Prof. Tatsunori Matsumoto
Kanazawa University
Japan

Ir. Dr. Vera Loo
Curtin University
Malaysia

Dr. Elizabeth Chong
Swinburne University of Technology
Malaysia

Mr. Chow Chee Meng
G & P Geotechnics Sdn Bhd
Malaysia

Dr. Chan Swee Huat
Geo-Excel Consultants Sdn Bhd
Malaysia

Dr. Fauzan Sahdi
University Malaysia Sarawak
Malaysia

Prof. Lee Min Lee
University of Nottingham Malaysia
Malaysia

Dr. Ng Kok Shien
Universiti Teknologi MARA
Malaysia

Dr. Gue Chang Shin
G & P Professionals Sdn Bhd
Malaysia

Dr. Choo Chung Siung
Swinburne University of Technology
Malaysia

Dr. Wong Kwong Soon
Curtin University
Malaysia

Dr. Jie-Ru Chen
National Chi Nan University
Taiwan

Dr. Shih-Hao Cheng
National Taiwan University of Science and Technology
Taiwan

Dr. Jui-Ching Chou
National Chung Hsing University
Taiwan

Prof. Ching Hung
National Cheng Kong University
Taiwan

Dr. Fuchen Teng
National Taiwan University of Science and Technology
Taiwan

Dr. Salisa Chaiyaput
King Mongkut's Institute of Technology Ladkrabang
Thailand

Prof. Suched Likitlersuang
Chulalongkorn University
Thailand

Dr. Avirut Puttiwongrak
Asian Institute of Technology
Thailand

Dr. Krit Saowaing
Asian Institute of Technology
Thailand

GEOTECHNICAL ENGINEERING

Paper Contribution, Technical Notes, and Discussions

Geotechnical Engineering is the official journal of the Southeast Asian Geotechnical Society and the Association of Geotechnical Societies in Southeast Asia. It is published four times a year in March, June, September, and December and is free to members of the Society. Please visit our website at <http://www.seags.ait.ac.th> for the membership information.

SEAGS & AGSSEA encourage the submission of scholarly and practice-oriented articles to its journal. The journal is published quarterly. Both sponsors of the journal, the Southeast Asian Geotechnical Society and the Association of Geotechnical Societies in Southeast Asia, promote the ideals and goals of the International Society for Soil Mechanics and Geotechnical Engineering in fostering communications, developing insights and enabling the advancement of the geotechnical engineering discipline. Thus, the publishing ethics followed is similar to other leading geotechnical journals. The standard ethical behavior of the authors, the editor, and his editorial panel, the reviewers, and the publishers is followed.

Before you submit an article, please review the guidelines stated herein for the manuscript preparation and submission procedures. The paper template is available upon request.

Geotechnical Engineering Journal accepts submissions via electronic. The manuscript file (text, tables, and figures) in both words and pdf format, together with the submission letter, should be submitted to the Secretariat and copied to the Chief Editor of Geotechnical Engineering Journal. Email: s-a-journal@ait.ac.th.

The guidelines for authors are as follows:

1. The manuscript including abstract of not more than 150 words and references must be typed in Times New Roman 9 on one side of A4 paper with a margin of 25 mm on each side. The abstract should be written clearly stating the purpose, the scope of work, and procedure adopted together with the major findings including a summary of the conclusions.
2. The paper title must not exceed 70 characters including spaces.
3. The maximum length of papers in the print format of the Journal is 12 two-column pages in single-spaced in Times New Roman 9 including figures and tables. A Journal page contains approximately 1,040 words. Authors can approximate manuscript length by counting the number of words on a typical manuscript page and multiplying that by the number of total pages (except for tables and figures). Add word-equivalents for figures and tables by estimating the portion of the journal page each will occupy when reduced to fit on a 160 mm x 240 mm journal page. A figure reduced to one-quarter of a page would be 260 word-equivalents. When reduced, the figure must be legible and its type size no smaller than 6 point font (after reduction).
4. Figures: Line art should be submitted in black ink or laser printed; halftones and color should be original glossy art. Figures should be submitted at the final width, i.e., 90 mm for one column and 185 mm for two columns. The font of the legends should be in Times New Roman and should use capital letters for the first letter of the first word only and use lower case for the rest of the words. Background screening and grids are not acceptable.
5. Each table must be typed on one side of a single sheet of paper.
6. All mathematics must be typewritten and special symbols identified. Letter symbols should be defined when they first appear.
7. The paper must have an introduction and end with a set of conclusions.
8. Practical applications should be included, if appropriate.
9. If experimental data and/or relations fitted to measurements are presented, the uncertainty of the results must be stated. The uncertainty must include both systematic (bias) errors and imprecisions.
10. Authors need not be Society members. Each author's full name, Society membership grade (if applicable), present title and affiliation, and complete mailing address must appear as a footnote at the bottom of the first page of the paper.
11. Journal papers submitted are subject to peer review before acceptance for publication.

12. Each author must use SI (International System) units and units acceptable in SI. Other units may be given in parentheses or in an appendix.
13. A maximum of five keywords should be given.
14. References

American Petroleum Institute (API) (1993). Recommended Practice for Planning, Designing, and Constructing Fixed Offshore Platforms – Working Stress Design, API Recommended Practice 2AWSD (RP 2A-WSD), 20th edition, 1993, p 191.

Earth, J.B., and Geo, W.P. (2011). “Asian Geotechnical amongst Authors of Conference Publications,” Proceedings of Int. Conference on Asian Geotechnical, publisher, city, pp 133-137.

Finn WDL and Fujita N. (2002). “Piles in liquefiable soils: seismic analysis and design issues,” Soil Dynamics and Earthquake Engineering, 22, Issues 9-12, pp 731-742.
15. Discussions on a published paper shall be made in the same format and submitted within six months of its appearance and closing discussion will be published within twelve months.

For additional information, please write to:

Dr. Kuo Chieh Chao

Hon. Secretary-General

Southeast Asian Geotechnical Society

Email: s-a-journal@ait.ac.th

Website: <http://www.seags.ait.ac.th>

Ir. Peng Tean Sin

Hon. Secretary-General

Association of Geotechnical Societies in Southeast Asia

Email: pengtean@gmail.com

Website: <http://www.agssea.org>



RELIABLE SOLUTIONS, TAILORED TO DEMANDS



PIPELINE ENGINEERING
(ONSHORE AND SUBSEA)



STRUCTURAL ENGINEERING
(MARINE, OFFSHORE AND SUBSEA)



RISER ENGINEERING
(RIGID AND FLEXIBLE)



GEOTECHNICAL ENGINEERING
(ONSHORE AND SUBSEA)



CONSTRUCTION ENGINEERING
INSTALLATION ENGINEERING



INSTALLATION EQUIPMENT DESIGN



COASTAL ENGINEERING



NAVAL ARCHITECT AND MOORING SYSTEM



INTEGRITY ASSESSMENT AND LIFE EXTENSION



RELIABILITY ENGINEERING



DECOMMISSIONING



3D MODELING

Contact Us:

129/9 Soi Hatsadisewi, Sutthisan Winitchai Road, Huai Khwang District, Bangkok, Thailand, 10310
www.synterra.co.th, Tel: +66 2087 0935, Email: admin@synterra.co.th

GEOTECHNICAL ENGINEERING

TABLE OF CONTENTS

<u>List of Papers</u>	<u>Page</u>
1. Influence of Microbial Activities in Reducing Erodibility of Sand <i>By S. Datta and D. Roy</i>	1-7
2. Effective Treatment Technique for Producing A Highly Pozzolanic Clay in a Construction Work <i>By A. Poowancum, P. Kotkhangphlu, and J. Ayawanna</i>	8-11
3. Estimating Hydraulic Conductivity Assisted with Numerical Analysis for Unsaturated Soil – A Case Study <i>By Md Rajibul Karim, David Hughes, and Md Mizanur Rahman</i>	12-19
4. Development of a Stress-Strain Path Controlled Triaxial Apparatus to Understand the Behaviour of Silty Sand <i>By A. T. M. Z. Rabbi, M. M. Rahman, K. Mills, and D. A. Cameron</i>	20-28
5. Laboratory Investigations on the Shear Behaviour of Sand-Tyre Derived Aggregate Mixtures <i>By J.S. Vinod, M. Neaz Sheikh, Soledad Mashiri, and Dean Mastello</i>	29-32
6. Stress-Strain and Deformation Characteristics of an Unsaturated Soil-Cement Interface under Different Overburden Stresses and Grouting Pressures <i>By M. A. Hossain and J. H. Yin</i>	33-41
7. Influence of the Sample Preparation on the Mechanical Characteristics of Hostun Sand <i>By Q. Gu, D. König, and M. Goudarzy</i>	42-50
8. Piled Raft on Sandy Soil - An Observational Study <i>By V. Balakumar, Min. J. Huang, Erwin Oh, Nilan S. Jayasiri, Richard Hwang, and A. S. Balasubramaniam</i>	51-65
9. Lateritic Soil Stabilization by Addition of Steel Slags <i>By S. Chaiyaput and J. Ayawanna</i>	66-69

Cover Photographs

1. Influence of Microbial Activities in Reducing Erodibility of Sand
By S. Datta and D. Roy
2. Development of a Stress-Strain Path Controlled Triaxial Apparatus to Understand the Behaviour of Silty Sand
By A. T. M. Z. Rabbi, M. M. Rahman, K. Mills, and D. A. Cameron
3. Stress-Strain and Deformation Characteristics of an Unsaturated Soil-Cement Interface under Different Overburden Stresses and Grouting Pressures
By M. A. Hossain and J. H. Yin
4. Influence of the Sample Preparation on the Mechanical Characteristics of Hostun Sand
By Q. Gu, D. König, and M. Goudarzy