

Geotechnical Engineering Journal of the SEAGS & AGSSEA

Vol. 52 No. 1 March 2021

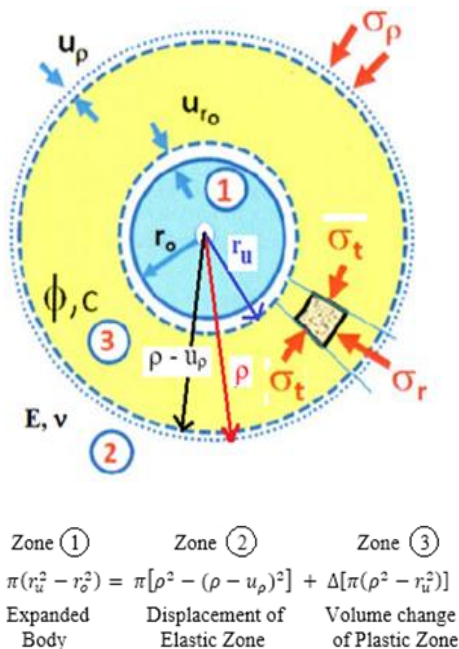
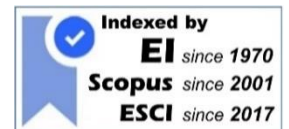
ISSN 0046-5828

# GEOTECHNICAL ENGINEERING

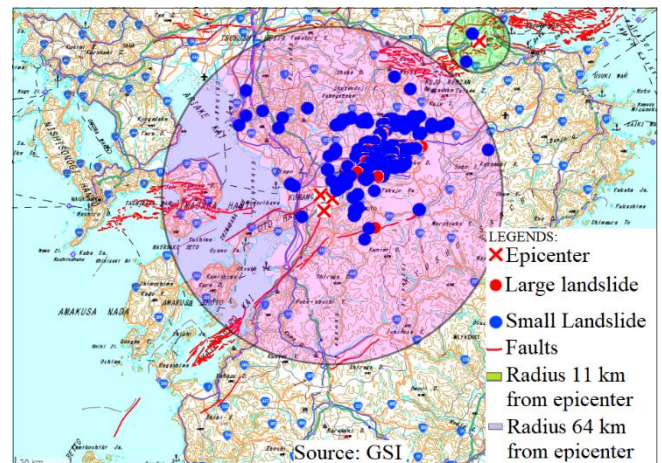
Journal of the



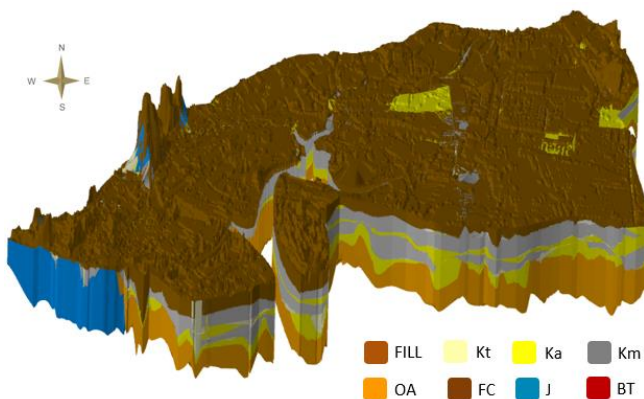
Sponsored by



Estimating Pile Axial Bearing Capacity by  $c-\phi$  Derived from Pressuremeter Test, after T-L. Gouw (2021)



Volcanic Cohesive Soil Behaviour under Static and Cyclic Loading, after Sumartini et al. (2021)



New Solutions to Geotechnical Challenges for Coastal Cities, after Chu et al. (2021)



Jack-in Pile Design and Construction for High-rise Buildings - A Malaysian Consulting Engineer's Perspective, after C. M. Chow and Y.C. Tan (2021)

# GEOTECHNICAL ENGINEERING

## EDITOR-IN-CHIEF

### 2020 - Present

Dr. Kuo Chieh Chao  
Asian Institute of Technology  
Thailand

### 2010 - 2019

Dr. Teik Aun Ooi (Malaysia)  
Prof. A. S. Balasubramaniam (Australia)

---

## EDITORIAL ADVISERS

Prof. Za-Chieh Moh (Taiwan)

Dr. Teik Aun Ooi (Malaysia)

Prof. A. S. Balasubramaniam (Australia)

Dr. Edward W. Brand (U.K.)

Prof. Kwet Yew Yong (Singapore)

Prof. Harry G. Poulos (Australia)

Dr. Chin-Der Ou (Taiwan)

Dr. Suttisak Soralump (Thailand)

Dr. Wen Hui Ting (Malaysia)

Dr. John Chien-Chung Li (Taiwan)

Dr. Chung Tien Chin (Taiwan)

Prof. Pedro Seco E Pinto (Portugal)

Prof. Dennes T. Bergado (Philippines)

---

## EDITORIAL PANEL

Prof. Paulus P. Rahardjo  
Parahyangan Catholic University  
Indonesia

Dr. Limin Zhang  
Hong Kong University of  
Science and Technology  
Hong Kong

Dr. Erwin Oh  
Griffith University  
Australia

Dr. Dominic Ong  
Griffith University  
Australia

Dr. Apiniti Jotisankasa  
Kasetsart University  
Thailand

Dr. Jie-Ru Chen  
National Chi Nan University  
Taiwan

Dr. Phung Duc Long  
Long GeoDesign  
Vietnam

Dr. Darren Chian  
National University of  
Singapore  
Singapore

Dr. Avirut Puttiwongrak  
Asian Institute of Technology  
Thailand

# GEOTECHNICAL ENGINEERING

## Paper Contribution, Technical Notes, and Discussions

*Geotechnical Engineering* is the official journal of the Southeast Asian Geotechnical Society and the Association of Geotechnical Societies in Southeast Asia. It is published four times a year in March, June, September, and December and is free to members of the Society. Please visit our website at <http://www.seags.ait.ac.th> for the membership information.

SEAGS & AGSSEA encourage the submission of scholarly and practice-oriented articles to its journal. The journal is published quarterly. Both sponsors of the journal, the Southeast Asian Geotechnical Society and the Association of Geotechnical Societies in Southeast Asia, promote the ideals and goals of the International Society for Soil Mechanics and Geotechnical Engineering in fostering communications, developing insights and enabling the advancement of the geotechnical engineering discipline. Thus, the publishing ethics followed is similar to other leading geotechnical journals. The standard ethical behavior of the authors, the editor, and his editorial panel, the reviewers, and the publishers is followed.

Before you submit an article, please review the guidelines stated herein for the manuscript preparation and submission procedures. The paper template is available upon request.

Geotechnical Engineering Journal accepts submissions via electronic. The manuscript file (text, tables, and figures) in both words and pdf format, together with the submission letter, should be submitted to the Secretariat and copied to the Chief Editor of Geotechnical Engineering Journal. Email: [s-a-journal@ait.ac.th](mailto:s-a-journal@ait.ac.th).

The guidelines for authors are as follows:

1. The manuscript including abstract of not more than 150 words and references must be typed in Times New Roman 9 on one side of A4 paper with a margin of 25 mm on each side. The abstract should be written clearly stating the purpose, the scope of work, and procedure adopted together with the major findings including a summary of the conclusions.
2. The paper title must not exceed 70 characters including spaces.
3. The maximum length of papers in the print format of the Journal is 12 two-column pages in single-spaced in Times New Roman 9 including figures and tables. A Journal page contains approximately 1,040 words. Authors can approximate manuscript length by counting the number of words on a typical manuscript page and multiplying that by the number of total pages (except for tables and figures). Add word-equivalents for figures and tables by estimating the portion of the journal page each will occupy when reduced to fit on a 160 mm x 240 mm journal page. A figure reduced to one-quarter of a page would be 260 word-equivalents. When reduced, the figure must be legible and its type size no smaller than 6 point font (after reduction).
4. Figures: Line art should be submitted in black ink or laser printed; halftones and color should be original glossy art. Figures should be submitted at the final width, i.e., 90 mm for one column and 185 mm for two columns. The font of the legends should be in Times New Roman and should use capital letters for the first letter of the first word only and use lower case for the rest of the words. Background screening and grids are not acceptable.
5. Each table must be typed on one side of a single sheet of paper.
6. All mathematics must be typewritten and special symbols identified. Letter symbols should be defined when they first appear.
7. The paper must have an introduction and end with a set of conclusions.
8. Practical applications should be included, if appropriate.
9. If experimental data and/or relations fitted to measurements are presented, the uncertainty of the results must be stated. The uncertainty must include both systematic (bias) errors and imprecisions.
10. Authors need not be Society members. Each author's full name, Society membership grade (if applicable), present title and affiliation, and complete mailing address must appear as a footnote at the bottom of the first page of the paper.
11. Journal papers submitted are subject to peer review before acceptance for publication.

12. Each author must use SI (International System) units and units acceptable in SI. Other units may be given in parentheses or in an appendix.
13. A maximum of five keywords should be given.
14. References

American Petroleum Institute (API) (1993). Recommended Practice for Planning, Designing, and Constructing Fixed Offshore Platforms – Working Stress Design, API Recommended Practice 2AWSD (RP 2A-WSD), 20th edition, 1993, p 191.

Earth, J.B., and Geo, W.P. (2011). “Asian Geotechnical amongst Authors of Conference Publications,” Proceedings of Int. Conference on Asian Geotechnical, publisher, city, pp 133-137.

Finn WDL and Fujita N. (2002). “Piles in liquefiable soils: seismic analysis and design issues,” Soil Dynamics and Earthquake Engineering, 22, Issues 9-12, pp 731-742.
15. Discussions on a published paper shall be made in the same format and submitted within six months of its appearance and closing discussion will be published within twelve months.

For additional information, please write to:

**Dr. Kuo Chieh Chao**

Hon. Secretary-General

Southeast Asian Geotechnical Society

Email: s-a-journal@ait.ac.th

Website: <http://www.seags.ait.ac.th>

**Ir. Peng Tean SIN**

Hon. Secretary-General

Association of Geotechnical Societies in Southeast Asia

Email: pengtean@gmail.com

Website: <http://www.agssea.org>

# GEOTECHNICAL ENGINEERING

## TABLE OF CONTENTS

| <b><u>List of Papers</u></b>  | <b><u>Page</u></b> |
|---|--------------------|
| 1. Estimating Pile Axial Bearing Capacity by $c-\phi$ Derived from Pressuremeter Test<br><i>By T-L. Gouw</i>  | 1-10               |
| 2. Volcanic Cohesive Soil Behaviour under Static and Cyclic Loading<br><i>By W. O. Sumartini, H. Hazarika, T. Kokusho, and S. Ishibashi</i>   | 11-18              |
| 3. Reliability Assessment on Deep Braced Excavations Adjacent to High Slopes in Mountain Cities<br><i>By R. H. Zhang, W. G. Zhang, Z. J. Hou, and W. Wang</i>   | 19-25              |
| 4. Effect of Compaction Ratio, Frequency, Stress Amplitude and Cyclic Stress Ratio on the Dynamic Characteristic of Sea Sand Material under Vehicle Loading<br><i>By C. L. Nguyen, H. H. Nguyen, Q. P. Nguyen, D.H. Ngo, and D. M. Nguyen</i> | 26-34              |
| 5. The Use of the Observational Method in Deep Excavations for the Realization of a Residential Compound in a Complex Hydrogeological Context<br><i>By M. Carassini, F. Bucci, and A. Antiga</i>  | 35-42              |
| 6. Performance of Helix Piled Raft Foundation in Tropical Fibrous Peat Soil Under Traffic Loads<br><i>By A. Arsyad, A. B. Muhiddin, T. Harianto, E. Budianto, P. Sangle, and A. B. Firmansyah</i>   | 43-47              |
| 7. Application of Distributed Fibre Optic Sensor (DFOS) in Bi-directional Static Pile Load Tests<br><i>By S. C. Lee, B.P. Tee, M. F. Chong, H. Mohamad, K. A. Ang, and P. P. Rahardjo</i>   | 48-54              |
| 8. Numerical Study of Ground Surface Settlement Induced by Diaphragm and Buttress Installation<br><i>By A. Lim and P. Hsieh</i>   | 55-60              |
| 9. New Solutions to Geotechnical Challenges for Coastal Cities<br><i>By J. Chu, S.F. Wu, H. Chen, X.H. Pan, and K. Chiam</i>  | 61-66              |
| 10. An Investigation of the Elastic Modulus of Cement-Stabilised Soil by Wet Mixing Method for Sand Ground<br><i>By H-D. Do, V-N. Pham, A-D. Pham, P-N. Huynh, and E. Oh</i>  | 67-74              |
| 11. Jack-in Pile Design and Construction for High-rise Buildings - A Malaysian Consulting Engineer's Perspective<br><i>By C. M. Chow and Y.C. Tan</i>   | 75-94              |
| 12. Compressibility Behaviour of Sapric Peat in Double Drainage Constant Rate of Strain (CRS) Test<br><i>By D. N. D. Unoi, A. Hasan, A. G. Amuda, and F. Sahd</i>   | 95-100             |

### Cover Photographs

1. Estimating Pile Axial Bearing Capacity by  $c-\phi$  Derived from Pressuremeter Test  
*By T-L. Gouw*
2. Volcanic Cohesive Soil Behaviour under Static and Cyclic Loading  
*By W. O. Sumartini, H. Hazarika, T. Kokusho, and S. Ishibashi*
3. New Solutions to Geotechnical Challenges for Coastal Cities  
*By J. Chu, S.F. Wu, H. Chen, X.H. Pan, and K. Chiam*
4. Jack-in Pile Design and Construction for High-rise Buildings - A Malaysian Consulting Engineer's Perspective  
*By C. M. Chow and Y.C. Tan*