

Geotechnical Engineering Journal of the SEAGS & AGSSEA

Vol. 53 No. 4 December 2022

ISSN 0046-5828

GEOTECHNICAL ENGINEERING

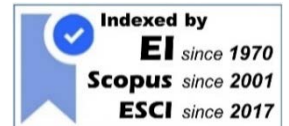
Journal of the



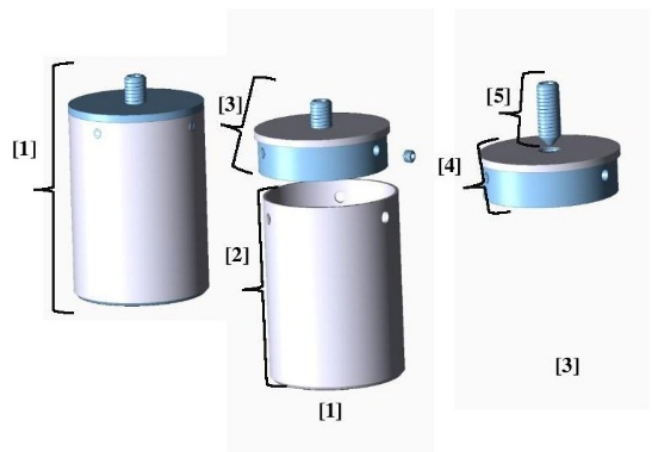
Sponsored by



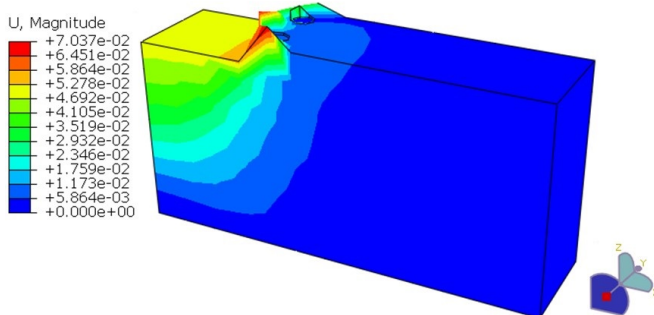
AIT
Asian Institute of Technology



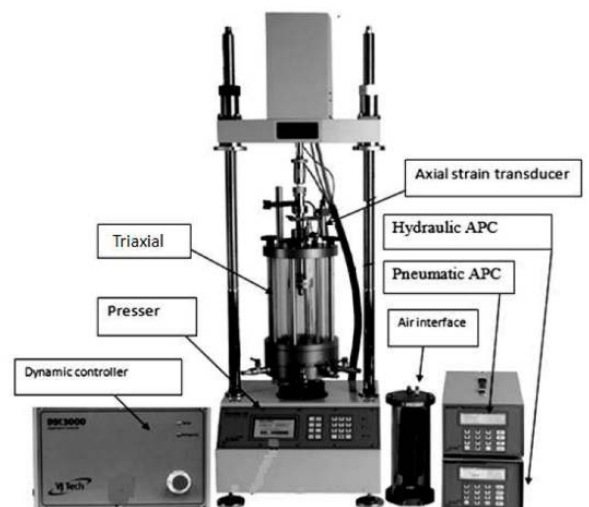
Water Characteristic Curve for Soils in Kazakhstan, after Satyanaga et al. (2022)



An Efficient Tool to Determine Undrained Shear Strength of Soft Soils, after Azaiez and Bouassida (2022)



A Numerical Study on The Shear Strength of Pervious Concrete Column in Weak Ground, after Rashma et al. (2022)



Unsaturated and Liquefaction: Case Study of Dense Sand, after Tran et al. (2022)

GEOTECHNICAL ENGINEERING

EDITOR-IN-CHIEF

Dr. Kuo Chieh Chao
Asian Institute of Technology
Thailand

ASSOCIATE EDITORS

Dr. Darren Siau Chen Chian
National University of Singapore
Singapore

Dr. Viroon Kamchoom
King Mongkut's Institute of Technology Ladkrabang
Thailand

EDITORIAL ADVISERS

Dr. Za-Chieh Moh (Taiwan)

Prof. Mary Ann Q. Adajar (Philippines)

Prof. A. S. Balasubramaniam (Australia)

Prof. Chun Fai Leung (Singapore)

Dr. Teik Aun Ooi (Malaysia)

Dr. Chung Tien Chin (Taiwan)

Prof. Kwet Yew Yong (Singapore)

Prof. Chih-Wei Lu (Taiwan)

Dr. Andy Y.F. Leung (Hong Kong)

Prof. Noppadol Phienwej (Thailand)

Prof. Widjojo A. Prakoso (Indonesia)

Dr. Suttisak Soralump (Thailand)

Mr. Junichi Yamazaki (Japan)

Dr. Duc Long Phung (Vietnam)

Ir. Liew Shaw Shong (Malaysia)

EDITORIAL REVIEWERS

Dr. Dominic Ong
Griffith University
Australia

Dr. Leonard Lim
University Malaysia Sarawak
Malaysia

Prof. Tatsunori Matsumoto
Kanazawa University
Japan

Ir. Dr. Vera Loo
Curtin University
Malaysia

Dr. Elizabeth Chong
Swinburne University of Technology
Malaysia

Ir. Chow Chee Meng
G & P Geotechnics Sdn Bhd
Malaysia

Dr. Chan Swee Huat
Geo-Excel Consultants Sdn Bhd
Malaysia

Dr. Fauzan Sahdi
University Malaysia Sarawak
Malaysia

Prof. Lee Min Lee
University of Nottingham Malaysia
Malaysia

Dr. Ng Kok Shien
Universiti Teknologi MARA
Malaysia

Dr. Gue Chang Shin
G & P Professionals Sdn Bhd
Malaysia

Dr. Choo Chung Siung
Swinburne University of Technology
Malaysia

Dr. Wong Kwong Soon
Curtin University
Malaysia

Dr. Jie-Ru Chen
National Chi Nan University
Taiwan

Dr. Shih-Hao Cheng
National Taiwan University of Science and Technology
Taiwan

Dr. Jui-Ching Chou
National Chung Hsing University
Taiwan

Prof. Ching Hung
National Cheng Kong University
Taiwan

Dr. Fuchen Teng
National Taiwan University of Science and Technology
Taiwan

Dr. Salisa Chaiyaput
King Mongkut's Institute of Technology Ladkrabang
Thailand

Prof. Suched Likitlersuang
Chulalongkorn University
Thailand

Dr. Avirut Puttiwongrak
Asian Institute of Technology
Thailand

Dr. Krit Saowaing
Asian Institute of Technology
Thailand

GEOTECHNICAL ENGINEERING

Paper Contribution, Technical Notes, and Discussions

Geotechnical Engineering is the official journal of the Southeast Asian Geotechnical Society and the Association of Geotechnical Societies in Southeast Asia. It is published four times a year in March, June, September, and December and is free to members of the Society. Please visit our website at <http://www.seags.ait.ac.th> for the membership information.

SEAGS & AGSSEA encourage the submission of scholarly and practice-oriented articles to its journal. The journal is published quarterly. Both sponsors of the journal, the Southeast Asian Geotechnical Society and the Association of Geotechnical Societies in Southeast Asia, promote the ideals and goals of the International Society for Soil Mechanics and Geotechnical Engineering in fostering communications, developing insights and enabling the advancement of the geotechnical engineering discipline. Thus, the publishing ethics followed is similar to other leading geotechnical journals. The standard ethical behavior of the authors, the editor, and his editorial panel, the reviewers, and the publishers is followed.

Before you submit an article, please review the guidelines stated herein for the manuscript preparation and submission procedures. The paper template is available upon request.

Geotechnical Engineering Journal accepts submissions via electronic. The manuscript file (text, tables, and figures) in both words and pdf format, together with the submission letter, should be submitted to the Secretariat and copied to the Chief Editor of Geotechnical Engineering Journal. Email: s-a-journal@ait.ac.th.

The guidelines for authors are as follows:

1. The manuscript including abstract of not more than 150 words and references must be typed in Times New Roman 9 on one side of A4 paper with a margin of 25 mm on each side. The abstract should be written clearly stating the purpose, the scope of work, and procedure adopted together with the major findings including a summary of the conclusions.
2. The paper title must not exceed 70 characters including spaces.
3. The maximum length of papers in the print format of the Journal is 12 two-column pages in single-spaced in Times New Roman 9 including figures and tables. A Journal page contains approximately 1,040 words. Authors can approximate manuscript length by counting the number of words on a typical manuscript page and multiplying that by the number of total pages (except for tables and figures). Add word-equivalents for figures and tables by estimating the portion of the journal page each will occupy when reduced to fit on a 160 mm x 240 mm journal page. A figure reduced to one-quarter of a page would be 260 word-equivalents. When reduced, the figure must be legible and its type size no smaller than 6-point font (after reduction).
4. Figures: Line art should be submitted in black ink or laser printed; halftones and color should be original glossy art. Figures should be submitted at the final width, i.e., 90 mm for one column and 185 mm for two columns. The font of the legends should be in Times New Roman and should use capital letters for the first letter of the first word only and use lower case for the rest of the words. Background screening and grids are not acceptable.
5. Each table must be typed on one side of a single sheet of paper.
6. All mathematics must be typewritten, and special symbols identified. Letter symbols should be defined when they first appear.
7. The paper must have an introduction and end with a set of conclusions.
8. Practical applications should be included, if appropriate.
9. If experimental data and/or relations fitted to measurements are presented, the uncertainty of the results must be stated. The uncertainty must include both systematic (bias) errors and imprecisions.
10. Authors need not be Society members. Each author's full name, Society membership grade (if applicable), present title and affiliation, and complete mailing address must appear as a footnote at the bottom of the first page of the paper.

11. Journal papers submitted are subject to peer review before acceptance for publication.
12. Each author must use SI (International System) units and units acceptable in SI. Other units may be given in parentheses or in an appendix.
13. A maximum of five keywords should be given.
14. References
American Petroleum Institute (API) (1993). Recommended Practice for Planning, Designing, and Constructing Fixed Offshore Platforms – Working Stress Design, API Recommended Practice 2AWS (RP 2A-WSD), 20th edition, p 191.
Earth, J.B., and Geo, W.P. (2011). “Asian Geotechnical amongst Authors of Conference Publications,” Proceedings of Int. Conference on Asian Geotechnical, publisher, city, pp 133-137.
Finn WDL and Fujita N. (2002). “Piles in liquefiable soils: seismic analysis and design issues,” Soil Dynamics and Earthquake Engineering, 22, Issues 9-12, pp 731-742.
15. Discussions on a published paper shall be made in the same format and submitted within six months of its appearance and closing discussion will be published within twelve months.

For additional information, please write to:

Dr. Kuo Chieh Chao

Hon. Secretary-General
Southeast Asian Geotechnical Society
Email: s-a-journal@ait.ac.th
Website: <http://www.seags.ait.ac.th>

Ir. Peng Tean Sin

Hon. Secretary-General
Association of Geotechnical Societies in Southeast Asia
Email: pengtean@gmail.com
Website: <http://www.agssea.org>

GEOTECHNICAL ENGINEERING

TABLE OF CONTENTS

List of Papers	Page
1. Water Characteristic Curve for Soils in Kazakhstan <i>By A. Satyanaga, A. B. Ibrahimi, A. S. Mohammad, A.H. Hamdany, M. Wijaya, S. W. Moon, and J. Kim</i>	1-8
2. Inverse Method: Deep Foundation Pit Construction <i>By T. Zhang and D. Pan</i>	9-12
3. Analytical Study for a Set of Partially Strengthened End-Bearing Granular Piles <i>By A. Jitendra Kumar Sharma and B. Ashish Solanki</i>	13-24
4. An Efficient Tool to Determine Undrained Shear Strength of Soft Soils <i>By Dalel Azaiez and Mounir Bouassida</i>	25-35
5. A Numerical Study on The Shear Strength of Pervious Concrete Column in Weak Ground <i>By Rashma R.S.V, Jayalekshmi B.R, and R. Shivashankar</i>	36-40
6. Unsaturation and Liquefaction: Case Study of Dense Sand <i>By K.H. Tran, S. Imanzadeh, S. Taibi, Hanène Souli, Jean-Marie Fleureau, Mahdia Hattab, and D. L. Dao</i>	41-48

Cover Photographs

1. Water Characteristic Curve for Soils in Kazakhstan
By A. Satyanaga, A. B. Ibrahimi, A. S. Mohammad, A.H. Hamdany, M. Wijaya, S. W. Moon, and J. Kim
2. An Efficient Tool to Determine Undrained Shear Strength of Soft Soils
By Dalel Azaiez and Mounir Bouassida
3. A Numerical Study on The Shear Strength of Pervious Concrete Column in Weak Ground
By Rashma R.S.V, Jayalekshmi B.R, and R. Shivashankar
4. Unsaturation and Liquefaction: Case Study of Dense Sand
By K.H. Tran, S. Imanzadeh, S. Taibi, Hanène Souli, Jean-Marie Fleureau, Mahdia Hattab, and D. L. Dao



UNLOCKING INSIGHTS FROM **GEO-DATA** FOR A **SAFE** AND **LIVEABLE** WORLD



For more information visit
fugro.com