

GEOTECHNICAL

ENGINEERING

Journal of the

SOUTHEAST ASIAN GEOTECHNICAL SOCIETY

&

ASSOCIATION OF GEOTECHNICAL SOCIETIES IN SOUTHEAST ASIA

Sponsored by

ASIAN INSTITUTE OF TECHNOLOGY

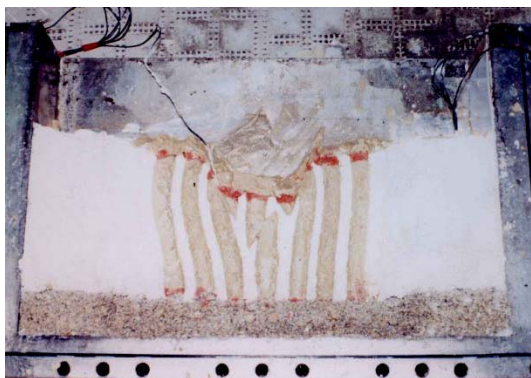
Editors: B.V.S. Viswanadham Hanh Quang Le Ooi Teik Aun



AGSSEA



AIT
Asian Institute of Technology



Failure mode of compacted sand piles
(After Kitazume et al., 2014)



Unsupported cavity (After König et al., 2014)



View of a soil confined coal ash embankment
(After Viswanadham & Mathur, 2014)



Run-out modelling of Byneset landslide
(After Thakur & Nigussie, 2014)

GEOTECHNICAL ENGINEERING

Published by the:

SOUTHEAST ASIAN GEOTECHNICAL SOCIETY &
ASSOCIATION OF GEOTECHNICAL SOCIETIES IN SOUTHEAST ASIA

EDITOR-IN-CHIEF

A.S. Balasubramaniam

EDITORS

Teik Aun Ooi

Noppadol Phienwej

CO-EDITORS

Der Wen Chang

D.T.Bergado

Jian Chu

Darius Wanatowski

EDITORIAL ADVISERS

A.S. BALASUBRAMANIAM, Australia

E.W. BRAND, U.K.

WEN HUI TING, Malaysia

KWET YEW YONG, Singapore

CHUNG TIEN CHIN, Taiwan

DENNES T. BERGADO, Philippines

ZA-CHIEH MOH, Taiwan

CHIN-DER OU, Taiwan

JOHN CHIEN-CHUNG LI, Taiwan

H.G. POULOS, Australia

PEDRO SECO E PINTO, Portugal

SEAGS GENERAL COMMITTEE 2013 - 2016

DR. TEIK AUN OOI (President)

DR. ZA-CHIEH MOH (Founding President)

PROF. KWET YEW YONG (Past President)

DR. WEN HUI TING (Past President)

DR. CHIN DER OU (Past President)

IR. YEW WENG YEE

IR. ENG CHOY LEE

PROF. HUNG-JIUN LIAO

PROF. MEEI-LING LIN

PROF. T. LIANG

DR. NOPPADOL PHIENWEJ (Hon. Secretary General)

DR. CHUNG TIEN CHIN (Immediate Past President)

DR. JOHN CHIEN-CHUNG LI (Past President)

PROF. A.S. BALASUBRAMANIAM (Past President)

PROF. JIAN CHU

IR. KENNY K.S. YEE

PROF. DER-WEN CHANG

DR. SOKTAY LIM

PROF. Dennes T Bergado

MR. V. SIVISAY

Geotechnical Engineering is the official journal of the Southeast Asian Geotechnical Society and the Association of Geotechnical Societies in Southeast Asia. It is published four times a year in March, June, September and December and is free to members of the Society. The annual subscription rate for non-members is US\$30 to individuals and US\$50 to libraries and companies. Back issues are available. Cheques or money orders should be made payable to the Asian Institute of Technology. Membership application forms and other details can be obtained from:

*The Secretariat, SEAGS
Room 211, AIT Library
Asian Institute of Technology
P.O. Box 4, Klong Luang
Pathumthani 12120, Thailand
Website: <http://www.seags.ait.ac.th>*

***Ir. Kenny Yee
Hon. Secretary General
Association of Geotechnical Societies in Southeast Asia
c/o Menard Geosystems Sdn Bhd
No. 15-2 Jalan USJ 10/1E
47620 Subang Jaya, Selangor, MALAYSIA
Tel: (60) 03 5632 1581
Fax: (60) 03 5632 1582
E-mail: kenny.yee@gmail.com
<http://www.agssea.org>***

GEOTECHNICAL ENGINEERING

AGSSEA COUNCIL SESSION 2013 - 2016

Chairman
Hon. Secretary-General
Hon. Treasurer
Immediate Past Chairman
Hon. Founder Chairman
Council Members

Southeast Asian Geotechnical Society (SEAGS)
Vietnamese Society for Soil Mechanics and Geotechnical Engineering (VSSMGE)
Hong Kong Geotechnical Engineering Society (HKGES)
Geotechnical Society of Singapore (GeoSS)
Thai Geotechnical Society (TGS)

Chinese Taipei Geotechnical Society (CTGS)
Indonesian Society for Geotechnical Engineering (HATTI)
Malaysian Geotechnical Society (MGS)

Nominated Co-opted
Members

Advisors

Prof. Kwet-Yew YONG
Ir. Kenny YEE
Prof. Charles Wang-Wai NG
Dr. Teik-Aun OOI
Dr. Za-Chieh MOH
Dr. Noppadol PHIENTWEJ
- Vacant -
Prof. NGUYEN Truong Tien
Mr. Mai Trieu QUANG
Ir. Tony Chin-To CHEUNG
Prof. George THAM
Dr. Tiong Guan NG
Prof. Chun-Fai LEUNG
Prof. Suttisak SORALUMP
Dr. Apiniti JOTISANKASA
Prof. Yung-Show FANG
Prof. San-Shyan LIN
Prof. Masyhur IRSYAM
Dr. Pinto Tua SIMATUPANG
Dr. Sin-Fatt CHAN
Ir. Yew Weng YEE
Prof. Jian CHU
Prof. Hung-Jiun LIAO
Prof. Trinh Minh THU
Dr. Wen-Hui TING
Prof. A S BALASUBRAMANIAM
Dr. John Chien-Chung LI
Prof. Dennes BERGADO
Ir. Raymond CHAN
Dr. Jack PAPPIN
Dr. Chung-Tien CHIN

Ir. Kenny Yee
Hon. Secretary General
Association of Geotechnical Societies in Southeast Asia
E-mail: kenny.yeeks@gmail.com

IEM Training Centre Sdn. Bhd.
No. 33-1A, Jalan SS 52/18
P.O. Box 224 (Jalan Sultan)
46200 Petaling Jaya, Selangor Darul Ehsan, MALAYSIA
Tel: (60) 03 7958 6851
Fax: (60) 03 79582851
E-mail: choy.iemtc@gmail.com

GEOTECHNICAL ENGINEERING

EDITORIAL PANEL

Prof. D.T. Bergado
Asian Institute of Technology
Bangkok Thailand

Dr. R.P. Brenner
Weinfelden
Switzerland

Prof. D.W. Chang
Tamkang University
Tamsui Taiwan

Prof. Jian Chu
Iowa State University
Iowa U.S.A

Prof. Fuping Gao
Institute of Mechanics
Chinese Academy of Sciences
Beijing China

Dr. Ivan Gratchev
Griffith University Gold Coast Campus
Gold Coast Queensland Australia

Dr. Wei-Dong Guo
University of Wollongong
Wollongong
Australia

Dr. Abuel-Naga Hossam
The University of Manchester
Manchester U.K.

Prof. Dong-Sheng Jeng
Griffith University Gold Coast Campus
Gold Coast
Queensland Australia

Prof. A (Malek) Bouazza
Monash University
Melbourne Australia

Prof. Jin-Chun Chai
Saga University
Saga, Japan

Prof. Y.K. Chow
National University of Singapore, NUS
Singapore

Prof. Roger Frank
Université Paris-Est
École des Ponts ParisTech
Laboratoire Navier-geotechnical team
(CERMES)
Marne-la-Vallée cedex 2 France

Prof. Christophe Gaudin
University of Western Australia
Perth Australia

Prof. Jürgen Grabe
Karlsruhe University
Germany

Prof. Jie Han
The University of Kansas
Lawrence, Kansas
USA

Prof. B. Indraratna
University of Wollongong
Wollongong Australia

Dr. Apinit Jotisankasa
Department of Civil Engineering
Kasetsart University
Bangkok Thailand

Prof. C. H. Juang
Clemson University
U.S.A.

Dr. Eng Choon Leong
Nanyang Technological University
Singapore

Prof. Robert Liang
Akron University
U.S.A.

Prof. San-Shyan Lin
Taiwan Ocean University
Keelung Taiwan

Prof. Tatsunori Matsumoto
Kanazawa University
Kakuma-machi, Kanazawa Japan

Prof. Fusao Oka
Kyoto University, Kyoto Japan

Prof. Charles W. W. Ng
The Hong Kong University of
Science and Technology
Kowloon Hong Kong

Dr. T.A. Ooi
The Institution of Engineers, Malaysia
Kuala Lumpur Malaysia

Prof. C.Y. Ou
National Taiwan University of Science and
Technology
Taipei, Taiwan

Prof. Anand J. Puppala
The University of Texas at Arlington
Texas U.S.A
Professor Paulus P. Rahardjo
Parahyangan Catholic University
Indonesia

Prof. Helmut F. Schweiger
Graz University of Technology
Graz
Austria

Prof. Poul V. Lade
The Catholic University of America
Washington, D.C., U.S.A.

Prof. Chun-Fai Leung
National University of Singapore
Singapore

Prof. Meei-Ling Lin
Department of Civil Engineering
National Taiwan University
Taipei, Taiwan

Mr. Tom Lunne
Norwegian Geotechnical Institute
Oslo, Norway

Prof. Akira Murakami
Kyoto University
Kyoto Japan

Dr. Farrokh Nadim
Technical Director
Norwegian Geotechnical Institute (NGI)
Oslo, Norway

Dr. Erwin Oh
Griffith University Gold Coast Campus
Gold Coast
Queensland Australia

Prof. Zhen-Yu Yin
Shanghai Jiao Tong University
China

Dr. N. Phienwej
Asian Institute of Technology
Bangkok Thailand

Prof. Harianto Rahardjo
Nanyang Technology University
Singapore

Dr. Shinji Sassa
Port and Airport Research Institute
Nagase Yokosuka Japan

Prof. Shui-Long Shen
Shanghai Jiao Tong University
Shanghai China

Prof. D. N. Singh
Indian Institute of Technology Bombay
Powai, Mumbai, India

Prof. Mitsutaka Sugimoto
Nagaoka University of Technology
Nagaoka Japan

Prof. Ikuo Towhata
University of Tokyo
Tokyo Japan

Prof. B.V.S. Viswanadham
Indian Institute of Technology Bombay
Powai, Maharashtra, India

Dr. Dariusz Wanatowski
The University of Nottingham
Ningbo
China

Prof. Li-zhong Wang
Zhejiang University
China

Dr. Albert T. Yeung
University of Hong Kong (HKU)
Hong Kong

Prof. Jian-Hua Yin
Hong Kong Polytechnic University
Hong Kong

GEOTECHNICAL ENGINEERING

GUEST EDITORS

Prof. Jie Han (March 2011)

Prof. Tatsunori Matsumoto (June 2011)
Prof. Der-Wen Chang

Prof. Chang Yu Ou (September 2011)

Dr. Dariusz Wanatowski (December 2011)

Prof. Charles W W Ng (March 2012)
Dr. Apiniti Jotisankasa

Prof. Ikuo Towhata (June 2012)
Prof. Der-Wen Chang
Dr. Ivan Gratchev

Prof. Abdelmalek Bouazza (September 2012)

Tom Lunne (December 2012)
Prof. Don de Groot

Prof. Der-Wen Chang (March 2013)
Dariusz Wanatowski

Prof Akira Murakami (June 2013)
Dariusz Wanatowski

Prof. Fusao Oka (September, 2013)
Prof. Helmut F. Schweiger
Prof. Muhunthan Balasingham

Prof Jinchun Chai (December, 2013)
Prof Shuulong Shen

PAST EDITORS

Dr. E.W. Brand (1970 – 1973)

Dr. E.W. Brand, Prof. A.S. Balasubramaniam (1974 – 1976)

Dr. E.W. Brand, Dr. V.K. Campbell (1977 – 1978)

Dr. V.K. Campbell (1978 – 1980)

Mr. J.S. Younger (1980 – 1985)

Mr. D.R. Greenway (1986 – 1987)

Mr. P.G.D. Whiteside (1988 – 1989)

Mr. C.A.M. Franks (1990 – 1995)

Prof. D.T. Bergado (1996 – 2001)

Dr. N. Phienwej (2002 -2010)

GEOTECHNICAL ENGINEERING

FORWARD

By Prof Viswanadham, and Dr.Ooi Teik Aun & Dr. Hanh Quang Le

A growing number of papers were received from time to time by authors who have an active interest in the journal. It is the only journal in SE Asia and we need to cater well for all authors.

As such, this Issue of the Journal is in two parts. The First Part is edited by Prof. Viswanadham and his team on Centrifugal Model Tests. The second part is edited by the in-house editors of the Journal.

Part 1: Centrifuge-based Physical Modeling

It is a pleasure for us to be Guest Editors for this Special Issue on Centrifuge-based Physical Modeling. There are seven excellent papers:

Centrifuge Modelling of Improved Ground; Simulation of Soil Movement in Geotechnical Centrifuge Testing – Deep Excavations, Tunnelling, Deposit; Run-out of sensitive clay debris: significance of the flow behaviour of sensitive clays; Verification of the Generalized Scaling Law for Flat Layered Sand Deposit; Performance of Rail Embankments Constructed with Coal Ash as a Structural Fill Material: Centrifuge study; Centrifuge Model Tests on the Use of Geocomposite as an Internal Drain in Levees; Field scale tests for determination of pullout capacity of suction pile anchors under varying loading conditions.

The authors of these papers are M. Kitazume, Y. Morikawa and S. Nishimura; D. König, O. Detert and T. Schanz; V. Thakur and D. Nigussie; T. Tobita, S. Escoffier, J. L. Chazelas and S. Iai; B.V.S. Viswanadham and V.K. Mathur; Vijaya Ravichandran, R. Ramesh, S. Muthukrishna Babu, G.A. Ramadass, M.V. Ramanamoorthy and M.A. Atmanand

With an aim of disseminating knowledge and expertise about the centrifuge based physical modelling techniques, the Technical committee TC 104 on Physical Modelling in Geotechnics of the *International Society of Soil Mechanics and Geotechnical Engineering* (ISSMGE) is organizing regional workshops first in Europe and Asia. The first Asian workshop on Physical Modelling in Geotechnics (Asiafuge2012) was held in Mumbai, India in November 14-16, 2012 and was organised in association with Indian Institute of Technology Bombay, Mumbai, India, and the Indian Geotechnical Society Delhi with an emphasis on the application of centrifuge-based physical modelling for infrastructure development. Selected themes included *soft ground problems, foundations, deep excavations, slopes and embankments, earthquakes, climate change, ground improvement techniques, tunnels, offshore foundation systems, environmental geotechnics, geosynthetics and novel construction techniques in infrastructure geotechnics*. The above papers were selected by a scientific committee consisting of delegates, who attended Asiafuge 2012.

B.V.S. Viswanadham (Lead Guest Editor)
C. Gaudin
T. Shanz

Part 2: Contributed Papers

In this part there are 7 contributed papers on mobile information system for risk management in urban underground construction; Design methods in Segmental Tunnel Linings; Challenges in constructing urban tunnels; Bulk compression of dredges soils; Energy piles; Bored piles in residual soils and Centrifugal shaking table tests on reinforced earth embankments.

The authors of the papers are: Hanh Quang Le and Bin-Chen Benson Hsiung; N.A. Do, D. Dias, P.P. Oreste, I. Djeran-Maigre; R. Katzenbach and S. Leppla; Hiroshi Shinsha and Takahiro Kumagai; A.M. Tang, J.M. Pereira, G. Hassen, N. Yavari; Mutiasani Dianmarti Kusuma and Eng-Choon Leong; W.Y. Hung, J.H. Hwang, C.J. Lee.

The editorial team of the contributed papers are most grateful to the authors and the reviewers for their excellent job. Most papers in Part 2 were presented in Geotech Hanoi 2013, but were modified significantly and had been subjected to extensive review.

Ooi Teik Aun (Lead Editor Part 2)
Hanh Quang Le
Noppodol Phienwej

GEOTECHNICAL ENGINEERING

ACKNOWLEDGEMENT

A growing number of contributed papers are now received for the journal. As such this Issue is in two parts; Part 1 is on Centrifuge based Physical Modelling with Prof. B.V.S. Viswanadham as lead editor. There are six papers contributed in this part. Part 2 of the Issue is on contributed papers as edited by In-house Editors Dr. Ooi Teik Aun and Dr. Hanh Quang Le. The future Issues of the Journal will also have papers edited by Guest Editors on theme Issues and contributed papers on a wide range of topics which are of great interest to our Geotechnical Community in SE Asia and elsewhere.

The topics and the authors are adequately described in the Foreword. The reviewers are not named here. But most papers had more than two reviewers. Special thanks are extended to the Editors, authors and reviewers for their excellent work.

K. Y. Yong
N . Phienwej
T. A. Ooi
A. S. Balasubramaniam

GEOTECHNICAL ENGINEERING

September-2014 Issue : Centrifuge Modelling of Geotechnical Infrastructures

Edited By Prof. B.V.S. Viswanadham, Prof. Christophe Gaudin & Prof. Tom Schanz

Prof. B.V.S. Viswanadham

Prof. Viswanadham obtained his PhD (Dr.-Ing.) from the Ruhr-University of Bochum, Germany in November 1996. He obtained his Bachelor degree in Civil Engineering from the Andhra University, Visakhapatnam, India in 1987 and thereafter did his Master of Technology in Civil Engineering with Geotechnical Engineering as a specialization from the Indian Institute of Technology Madras (IIT Madras), Chennai, India in 1989. Before joining the Indian Institute of Technology Bombay (IIT Bombay) in December 1998, he worked as a Senior Project Officer, Department of Ocean Engineering, IIT Madras and as a Scientist, Geotechnical Engineering Division, Central Road Research Institute, New Delhi for about eleven years. Currently, Prof. Viswanadham is working as a Professor in the department of Civil Engineering with geotechnical engineering as a specialization. The research interest of Prof. Viswanadham is on: (1) Centrifuge model studies on the behaviour of geotechnical structures; (2) Environmental Geotechnics with a special reference to landfill waste containment systems; (3) Ground improvement using Geosynthetics and studies on the behaviour of geosynthetic reinforced soil structures; (4) Natural hazard mitigation – landslides and slope protection; (5) Bulk utilization of waste materials especially coal ash. He has published 120+ technical papers in peer-reviewed international journals/International conferences/National conferences.

Prof. Viswanadham is a Co-ordinator of the National Geotechnical Centrifuge Facility available at IIT Bombay. He has focused in disseminating knowledge on centrifuge modelling to Students/Professionals through courses (for both undergraduate and post-graduate levels) and continuing education programme courses at IIT Bombay with an aim to establish centrifuge modelling technique as an essential tool for studying problems in geotechnical and Geoenvironmental Engineering. Prof. Viswanadham is the Member of the Technical Committee for Physical Modelling on Geotechnics (TC104) of the International Society of Soil Mechanics and Geotechnical Engineering (ISSMGE), and the Chair of the 1st Asian regional workshop on the Centrifuge Modelling for Geotechnical Infrastructure to be held in IIT Bombay in November 14-16, 2012.

Prof. Christophe Gaudin

Prof. Gaudin graduated with a Doctorate in Engineering Science from the Ecole Centrale de Nantes in November 2002. He subsequently joined the Centre for Offshore Foundation Systems (COFS) in July 2003 and was appointed as Manager of the UWA centrifuge facilities. He was promoted Research Professorial Fellow in 2009 and hold since the position of Deputy Director of COFS. His research interests cover offshore anchoring systems and shallow foundations, pipeline-soil interaction and similitude principles associated with centrifuge modelling, for which he has authored 90+ referred publications.

As manager of the UWA centrifuge facilities and a team of 8 technicians, Prof Gaudin has focused on establishing centrifuge modelling techniques as an essential tool to assist the offshore industry in developing and designing foundation solutions. He has built a strong relationship with the offshore industry, raising over \$3.5M of research funding and producing 50+ consulting reports.

Since 2010, Prof. Gaudin is the Chair of the Technical Committee for Physical Modelling on Geotechnics (TC104) of the International Society of Soil Mechanics and Geotechnical Engineering (ISSMGE), and the Chair of the 8th International Conference on Physical Modelling in Geotechnics to be held in Perth in 2014. His goals as TC Chair for the current term are notably to increase awareness of centrifuge modelling techniques and capabilities in the geotechnical engineering community, both in academia and industry, and to support the emergence of new centrifuge centres around the world.

Prof. Tom Schanz

Prof. Tom Schanz received his PhD at ETH Zurich on the mechanical behavior of granular mixture. This period followed a PostDoc stay at Kagoshima University (Japan). Thereafter he received his habilitation at University Stuttgart (Germany). After ten years as Professor at Bauhaus-University Weimar (Germany) he is nowadays head of the Laboratory of Foundation Engineering, Soil- and Rock Mechanics at Ruhr-University Bochum, Germany. The laboratory is running currently two geotechnical centrifuges since about 30 years. Research projects involving these equipments cover all subjects from environmental engineering, natural hazard assessment and nowadays problems involving unsaturated soil mechanics. Beside the centrifuge center the laboratory is running an excellent equipped soil dynamics and clay lab. Tom's research papers cover a wide range of theoretical, experimental and numerical subjects, as unsaturated soil mechanics, physico-chemical clay behavior, constitutive models, earthquake engineering and application of numerical methods to geomechanical problems. Tom is member of international committees as Unsaturated soils and European Numerical methods, he is chairman of the German committee for Numerical Methods in Geotechnics.

GEOTECHNICAL ENGINEERING

SEPTEMBER 2014: SPECIAL ISSUE ON CENTRIFUGE MODELLING OF GEOTECHNICAL INFRASTRUCTURE

Editors: B.V.S. Viswanadham, Christophe Gaudin & Tom Schanz

TABLE OF CONTENTS

<u>List of Papers</u>	<u>Page</u>
Centrifuge Modelling of Improved Ground By M. Kitazume, Y. Morikawa and S. Nishimura *** Please click here to download paper	01
Simulation of Soil Movement in Geotechnical Centrifuge Testing – Deep Excavations, Tunnelling, Deposit By D. König, O. Detert and T. Schanz *** Please click here to download paper	12
Run-out of Sensitive Clay Debris: Significance of the Flow Behavior of Sensitive Clays By V. Thakur and D. Nigussie *** Please click here to download paper	22
Verification of the Generalized Scaling Law for Flat Layered Sand Deposit By T. Tobita, S. Escoffier, J. L. Chazelas and S. Iai *** Please click here to download paper	32
Performance of Rail Embankments Constructed with Coal Ash as a Structural Fill Material: Centrifuge Study By B.V.S. Viswanadham and V.K. Mathur *** Please click here to download paper	40
Field Scale Tests for Determination of Pullout Capacity of Suction Pile Anchors Under Varying Loading Conditions By Vijaya Ravichandran, R. Ramesh, S. Muthukrishna Babu, G.A. Ramadass, .M.V.Ramanamoorthy and M.A. Atmanand *** Please click here to download paper	49
A Novel Mobile Information System for Risk Management of Adjacent Buildings in Urban Underground Construction By Hanh Quang Le and Bin-Chen Benson Hsiung *** Please click here to download full paper	52
Comparison Between Design Methods Applied to Segmental Tunnel Linings N.A. Do, D. Dias, P.P. Oreste, I. Djeran-Maigre *** Please click here to download full paper	64
Challenging Construction Projects Related to Urban Tunnels By R. Katzenbach and S. Leppla *** Please click here to download full paper	71
Bulk Compression of Dredged Soils by Vacuum Consolidation Method Using Horizontal Drains By Hiroshi Shinsha and Takahiro Kumagai *** Please click here to download paper	78
Mechanical Behavior of Energy Piles in Dry Sand By A.M. Tang, J.M. Pereira, G. Hassen, N. Yavari *** Please click here to download paper	86
Estimating Side Resistance of Bored Pile in Residual Soils By Mutiasani Dianmarti Kusuma and Eng-Choon Leong *** Please click here to download paper	90
Seismic Response of Geosynthetic Reinforced Earth Embankment by Centrifuge Shaking Table Tests By W.Y. Hung, J.H. Hwang, C.J. Lee *** Please click here to download paper	96

Cover Photographs:

1. Failure mode of compacted sand piles (After Kitazume et al., 2014)
2. View of a soil confined coal ash embankment (After Viswanadham and Mathur, 2014)
3. Unsupported cavity (After König et al., 2014)
4. Run-out modeling of Byneset landslide (After Thakur & Nigussie, 2014)

GEOTECHNICAL ENGINEERING

Paper Contribution, Technical notes and Discussions

SEAGS & AGSSEA encourage the submission of scholarly and practice-oriented articles to its journal. The journal is published quarterly. Both sponsors of the journal, the Southeast Asian Geotechnical Society and the Association of Geotechnical Societies in Southeast Asia, promote the ideals and goals of the International Society of Soil Mechanics and Geotechnical Engineering in fostering communications, developing insights and enabling the advancement of the geotechnical engineering discipline. Thus the publishing ethics followed is similar to other leading geotechnical journals. Standard ethical behaviour of the authors, the editor and his editorial panel, the reviewers and the publishers is followed.

Before you submit an article, please review the guidelines stated herein for the manuscript preparation and submission procedures. Paper template is available upon request.

Geotechnical Engineering Journal accepts submissions via electronic. The manuscript file (text, tables and figures) in both words and pdf format together with the submission letter should be submitted to the Secretariat and copied to the Editor-in-Chief, Geotechnical Engineering Journal, c/o School of Engineering and Technology, Asian Institute of Technology, Room no. 211, AIT Library, Asian Institute of Technology, P.O. Box 4, Klong Luang, Pathumthani 12120, Thailand. Email: seags@ait.ac.th. Papers under review, accepted for publication or published elsewhere are not accepted. The guidelines for author are as follows:-

1. The manuscript including abstract of not more than 150 words and references must be typed in Times New Roman 9 on one side of A4 paper with a margin of 25 mm on each side. The abstract should be written clearly stating the purpose, scope of work and procedure adopted together with the major findings including a summary of the conclusions.
2. The paper title must not exceed 70 characters including spaces.
3. The maximum length of papers in the print format of the Journal is 12 two-column pages in single-spaced in Times New Roman 9 including figures and tables. A Journal page contains approximately 1,040 words. Authors can approximate manuscript length by counting the number of words on a typical manuscript page and multiplying that by the number of total pages (except for tables and figures). Add word-equivalents for figures and tables by estimating the portion of the journal page each will occupy when reduced to fit on a 160 mm x 240 mm journal page. A figure reduced to one-quarter of a page would be 260 word-equivalents. When reduced, the figure must be legible and its type size no smaller than 6 point font (after reduction).
4. Figures: Line art should be submitted in black ink or laser printed; halftones and color should be original glossy art. Figures should be submitted at final width i.e. 90 mm for one column and 185 mm for two columns. The font of the legends should be in Times New Roman and should use capital letters for the first letter of the first word only and use lower case for the rest of the words. Background screening and grids are not acceptable.
5. Each table must be typed on one side of a single sheet of paper.
6. All mathematics must be typewritten and special symbols identified. Letter symbols should be defined when they first appear.
7. The paper must have an introduction and end with a set of conclusions.
8. Practical applications should be included, if appropriate.
9. If experimental data and/or relations fitted to measurements are presented, the uncertainty of the results must be stated. The uncertainty must include both systematic (bias) errors and imprecisions.
10. Authors need not be Society members. Each author's full name, Society membership grade (if applicable), present title and affiliation and complete mailing address must appear as a footnote at the bottom of the first page of the paper.
11. Journal papers submitted are subject to peer review before acceptance for publication.
12. Each author must use SI (International System) units and units acceptable in SI. Other units may be given in parentheses or in an appendix.
13. Maximum of five keywords should be given.

14. REFERENCES

- American Petroleum Institute (API) (1993). Recommended Practice for Planning, Designing and Constructing Fixed Offshore Platforms – Working Stress Design, API Recommended Practice 2AWSD (RP 2A-WSD), 20th edition, 1993, p191
- Earth, J.B., and Geo, W.P. (2011). “Asian Geotechnical amongst Authors of Conference Publications”, Proceedings of Int. Conference on Asian Geotechnical, publisher, city, pp 133-137.
- Finn WDL and Fujita N. (2002). “Piles in liquefiable soils: seismic analysis and design issues,” Soil Dynamics and Earthquake Engineering, 22, Issues 9-12, pp731-742
15. Discussions on a published paper shall be made in the same format and submitted within six months of its appearance and closing discussion will be published within twelve months.

For additional information, please write to:

***The Secretariat, SEAGS
Room 211, AIT Library
Asian Institute of Technology
P.O. Box 4, Klong Luang
Pathumthani 12120, THAILAND
Email: seags@ait.ac.th
Website: <http://www.seags.ait.ac.th>***

***Ir. Kenny Yee
Hon. Secretary General
Association of Geotechnical Societies in Southeast Asia
E-mail: kenny.yeeks@gmail.com***

Website: <http://www.agssea.org>

***IEM Training Centre Sdn. Bhd.
No. 33-1A, Jalan SS 52/18
P.O. Box 224 (Jalan Sultan)
46200 Petaling Jaya, Selangor Darul Ehsan, MALAYSIA
Tel: (60) 03 7958 6851
Fax: (60) 03 79582851
E-mail: choy.iemtc@gmail.com
Website: <http://www.iemtc.com>***