

GEOTECHNICAL

ENGINEERING

Journal of the

SOUTHEAST ASIAN GEOTECHNICAL SOCIETY

&

ASSOCIATION OF GEOTECHNICAL SOCIETIES IN SOUTHEAST ASIA

Sponsored by

ASIAN INSTITUTE OF TECHNOLOGY



AGSSEA

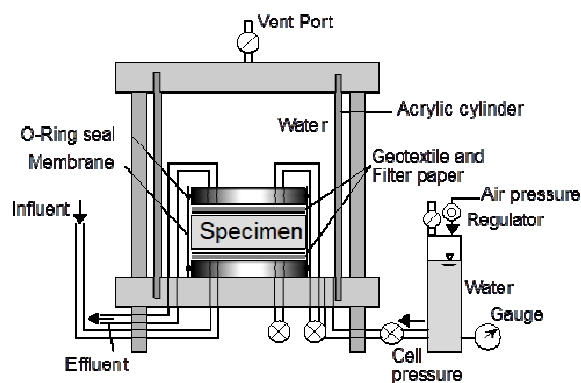


AIT

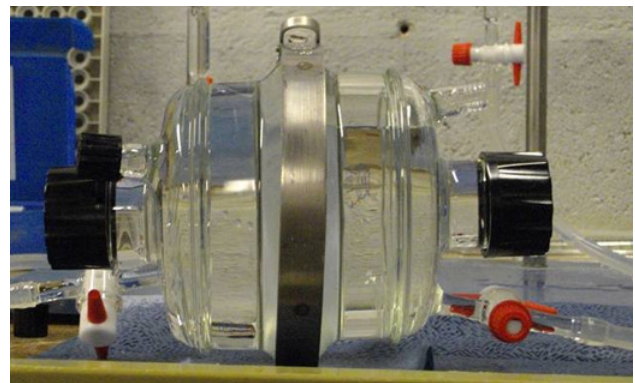
Asian Institute of Technology

Guest Editor:

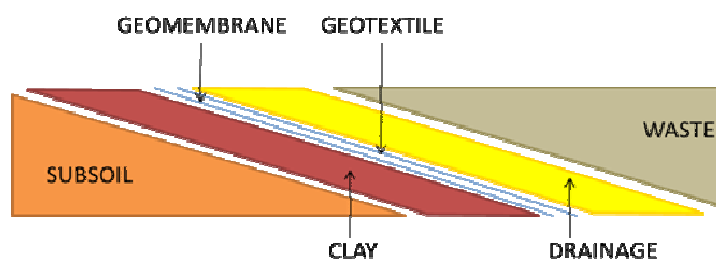
Prof. Abdelmalek Bouazza



*Scheme of a flexible-wall permeameter
(After Naka et al, 2012)*



Diffusion cell (After Touze-Foltzet al, 2012)



Typical lining system (After Dixon et al, 2012)

GEOTECHNICAL ENGINEERING

Published by the:

SOUTHEAST ASIAN GEOTECHNICAL SOCIETY &
ASSOCIATION OF GEOTECHNICAL SOCIETIES IN SOUTHEAST ASIA

EDITOR-IN-CHIEF

A.S. Balasubramaniam

EDITORS

Teik Aun Ooi

Noppadol Phienwej

CO-EDITORS

Der Wen Chang

D.T.Bergado

Jian Chu

Darius Wanatowski

EDITORIAL ADVISERS

A.S. BALASUBRAMANIAM, *Australia*
E.W. BRAND, *U.K.*
WEN HUI TING, *Malaysia*
SURACHAT SAMBHANDHARAKSA
CHUNG TIEN CHIN

ZA-CHIEH MOH, *Taiwan*
CHIN-DER OU, *Taiwan*
JOHN CHIEN-CHUNG LI
KWET YEW YONG
H.G. POULOS, *Australia*

SEAGS GENERAL COMMITTEE 2010 - 2013

DR. TEIK AUN OOI (*President*)
DR. ZA-CHIEH MOH (*Founding President*)
PROF. KWET YEW YONG (*Past President*)
DR. WEN HUI TING (*Past President*)
DR. CHIN DER OU (*Past President*)
IR. YEW WENG YEE
IR. ENG CHOY LEE
PROF. HUNG-JIUN LIAO
DR. NOPPADOL PHIENWEJ
PROF. T. LIANG

PROF. D. T. BERGADO (*Hon. Secretary General*)
DR. CHUNG TIEN CHIN (*Immediate Past President*)
DR. JOHN CHIEN-CHUNG LI (*Past President*)
PROF. A.S. BALASUBRAMANIAM (*Past President*)
PROF DR. JIAN CHU
IR. KENNY K.S. YEE
PROF. DER-WEN CHANG
DR. SOKTAY LIM
PROF. MEEI-LING LIN
MR. V. SIVISAY

Geotechnical Engineering is the official journal of the Southeast Asian Geotechnical Society and the Association of Geotechnical Societies in Southeast Asia. It is published four times a year in March, June, September and December and is free to members of the Society. The annual subscription rate for non-members is **US\$30** to individuals and **US\$50** to libraries and companies. Back issues are available. Cheques or money orders should be made payable to the Asian Institute of Technology. Membership application forms and other details can be obtained from:

*The Secretariat, SEAGS
Room 211, AIT Library
Asian Institute of Technology
P.O. Box 4, Klong Luang
Pathumthani 12120, Thailand
Website: <http://www.seags.ait.ac.th>*

GEOTECHNICAL ENGINEERING

AGSSEA COUNCIL SESSION 2010 - 2013

Chairman:	PROF. KWET YEW YONG	
Hon. Secretary General:	IR. KENNY K S YEE	
Hon. Treasurer:	DR. CHUNG-TIEN CHIN	
Immediate Past Chairman:	IR. DR. TEIK AUN OOI	
Hon. Founder Chairman:	DR. ZA-CHIEH MOH	
Council Members:	PROF. DENNES T. BERGADO	Hon. Secretary General SEAGS
	IR. YEW WENG YEE	SEAGS
	PROF. NGUYEN TRUONG TIEN	President, VSSMGE
	MR. NGUYEN DUC TOAN	Dep. Gen. Secretary, VSSMGE
	IR. ALBERT HO	President, HKGES
	PROF. GEORGE THAM	HKGES
	MR. CHUA TONG SENG	President, GeoSS 2012-2013
	PROF. CHUN FAI LEUNG	GeoSS
	DR. PISIT KUNTIWATTANAKUL	President, TGS
	DR. APINITI JOTISANKASA	Hon. Secretary, TGS
	PROF. SAN-SHYAN LIN	President, CTGS
	PROF. MEEI-LING LIN	CTGS
Nominated &	PROF. JIAN CHU	Singapore
Co-opted Members:	PROF. H. J. LIAO	Taiwan
	PROF. CHARLES W.W. NG	Hong Kong
Advisors:	DR. WEN HUI TING	Malaysia
	DR. SIN FATT CHAN	Malaysia
	PROF. A.S. BALASUBRAMANIAM	Australia
	DR. JOHN CHIEN-CHUNG LI	Taiwan
	PROF. SURACHAT SAMBHANDHARAKSA	Thailand
	PROF. NOPPADOL PHIENWEJ	Thailand
	IR. RAYMOND CHAN	Hong Kong
	DR. JACK PAPPIN	Hong Kong

Ir. Kenny Yee
Hon. Secretary General
Association of Geotechnical Societies in Southeast Asia
c/o Menard Geosystems Sdn Bhd
No. 15-2 Jalan USJ 10/1E
47620 Subang Jaya, Selangor, MALAYSIA
Tel: (60) 03 5632 1581
Fax: (60) 03 5632 1582
E-mail: kenny.yeeks@gmail.com

IEM Training Centre Sdn. Bhd.
No. 33-1A, Jalan SS 52/18
P.O. Box 224 (Jalan Sultan)
46200 Petaling Jaya, Selangor Darul Ehsan, MALAYSIA
Tel: (60) 03 7958 6851
Fax: (60) 03 7958 2851
E-mail: choy.iemtc@gmail.com

GEOTECHNICAL ENGINEERING

EDITORIAL PANEL

Dr. R.P. Brenner
Weinfelden
Switzerland

Prof. Cheng-Hsing Chen
National Taiwan University
Taipei, Taiwan

Prof. In Mo Lee
Korea University
Seoul, Korea

Prof. San-Shyan Lin
Taiwan Ocean University
Keelung, Taiwan

Dr. Warakorn Mairiang
Kasetsart University
Bangkok, Thailand

Prof. Harianto Rahardjo
Nanyang Technology University
Singapore

Dr. Satoru Shibuya
Kobe University
Kobe, Japan

Dr. Jiro Takemura
Tokyo Institute of Technology (TIT)
Tokyo, Japan

Dr. Tanaka Hiroyuki
Port and Airport Research Institute
Yokosuka, Japan

Prof. Wilson H. Tang
The Hong Kong University of Science &
Technology
Kowloon, Hong Kong

Dr. T.H. Seah
MAA Geotechnics, Co. Ltd
Bangkok, Thailand

Prof. D.W. Chang
Tamkang University
Tamsui, Taiwan

Dr. Jin-Chun Chai
Saga University
Saga, Japan

Prof. B. Indraratna
University of Wollongong
Wollongong, Australia

Prof. Chun-Fai Leung
National University of Singapore
Singapore

Prof. Madhira R. Madhav
Indian Institute of Technology
Kanpur, India

Prof. Hiroyasu Ohtsu
Kyoto University
Kyoto, Japan

Dr. Mohamad R. Selamat
University Sains Malaysia
Pulau Pinang, Malaysia

Prof. Mitsutaka Sugimoto
Nagaoka University of Technology
Nagaoka, Japan

Prof. Siew Ann Tan
National University of Singapore
Singapore

Ir. Thian Seng Yee
GETD, The Institution of Engineers, Malaysia.

Prof Charles W. W. Ng
The Hong Kong University of Science and
Technology
Kowloon, Hong Kong

Dr. S.L. Shen
Shanghai Jiao Tong University
Shanghai, China

Dr. S. Yimsiri
Burapha University
Chonburi, Thailand

GEOTECHNICAL ENGINEERING

GUEST EDITORS

Prof. Jie Han (March 2011)

Prof. Tatsunori Matsumoto (June 2011)

Prof. Der Wen Chang

Prof. Chang Yu Ou (September 2011)

Dr. Dariusz Wanatowski (December 2011)

Prof. Charles W W Ng (March 2012)

Dr. Apiniti Jotisankasa

Prof. Ikuo Towhata (June 2012)

Prof. Der Wen Chang

Dr. Ivan Gratchev

Prof. Malek Bouazza (September 2012)

Tom Lunne (December 2012)

Prof. Don de Groot

PAST EDITORS

Dr. E.W. Brand (1970 – 1973)

Dr. E.W. Brand, Prof. A.S. Balasubramaniam (1974 – 1976)

Dr. E.W. Brand, Dr. V.K. Campbell (1977 – 1978)

Dr. V.K. Campbell (1978 – 1980)

Mr. J.S. Younger (1980 – 1985)

Mr. D.R. Greenway (1986 – 1987)

Mr. P.G.D. Whiteside (1988 – 1989)

Mr. C.A.M. Franks (1990 – 1995)

Prof. D.T. Bergado (1996 – 2001)

Dr. N. Phienwej (2002 -2010)

GEOTECHNICAL ENGINEERING

PREFACE

Geosynthetics are extensively used in waste containment facilities either as part of cover or bottom lining systems. Their aim is to reduce water ingress into the containment, to control gas migration in the case of the cover liners, and to limit contaminant migration to levels that will result in negligible impact in the case of bottom liners. This special issue gives an overview of the research effort conducted in various part of the world on the theme of this special issue. It contains ten papers addressing important aspects related to waste containment design including the important interaction between waste or soil and lining systems, geomembrane wrinkles, hydrocarbon diffusion, geosynthetic clay liners and interaction with acid mine drainage and acidic solutions, settlement and its mitigation through the use of geosynthetics and finally concluding with an overview of the use of geosynthetics in landfills in Asia and in Perth, Australia.

Finally, I wish to express my appreciation to the authors for their effort and time in the preparation of a set of very high quality papers. I am very much indebted to the reviewers for their highly competent efforts. Last but not least, I would like to gratefully acknowledge the assistance and encouragement of Professor A. Balasubramaniam, Editor in Chief, during the preparation of this issue.

Abdelmalek Bouazza
Guest Editor

GEOTECHNICAL ENGINEERING

ACKNOWLEDGEMENT

The September 2012 Issue of the journal has Prof. Abdelmalek Bouazza from Monash University as the Guest Editor. We are greatly indebted to Malek to bring this flavour of Geosynthetics and Sanitary Landfill to our Journal through the contributions from invited authors.

There are ten excellent papers authored by: N. Dixon, K. Zamara, D.R.V. Jones and G. Fowmes; R. K. Rowe, P. Yang, M.J. Chappel, R.W.I. Brachman and W.A. Take ; N. Touze-Foltz, M. Ahari, M. Mendes, C. Barral, M. Gardoni and L. Mazéas; P.J. Fox, C. Athanassopoulos, S. S. Thielmann and A. N. Stern; A. Naka, T. Katsumi, G. Flores, T. Inui, T. Ohta, T. Urakoshi and T. Ishihara; Y. Liu, W.P. Gates and A. Bouazza; S. Rajesh and B.V.S. Viswanadham; B.V.S. Viswanadham, S. Rajesh and A. Bouazza; H. B. Ng and B. Ramsey; and L. Du Preez, R. Beaman and I. Watkins. The topics covered waste/lining interaction systems; compacted clay liners in slopes; Diffusion of phenolic compounds through an HDPE geomembrane; Damages in Geomembranes due to Gravel in Underlying Compacted Clay; Mineral barriers against acid rock drainage; Geosynthetic Clay Liners Using Polymer Modified Geosynthetic Lining Systems for Modern Waste Facilities with Bentonite; Deformation Behaviour of Soil barriers of Landfill Covers; and Case studies in major metropolitan landfills These contributions will be of great interest to engineers and researchers who are dealing with Challenges in Geosynthetics and Sanitary Landfill Design Practice.

Prof. Abdelmalek Bouazza must be congratulated for single-handedly doing all the editorial works in bringing forth this Issue of the journal on an important and useful theme.

Sincere thanks are due to all the contributing authors.

The March, June and September 2012 Issues are all released well in time and the credits go to the Guest Editors and the in-house editorial teams.

K.Y. Yong
D.T. Bergado
T.A.Ooi
A.S.Balasubramaniam

GEOTECHNICAL ENGINEERING

SEPTEMBER 2012 SPECIAL ISSUE ON GEOSYNTHETICS AND SANITARY LANDFILL

Guest Editor: Prof. Abdelmalek Bouazza

PROFESSOR ABDELMALEK BOUAZZA is very prominent in technical and professional society activities and serves on a number of international technical committees. Currently, he is a member of the International Geosynthetics Society (IGS) council and chair of the Asian Activities Committee of the International Geosynthetics Society. He is a core member of the International Society of Soil Mechanics and Geotechnical Engineering (ISSMGE) Technical Committee No5 (TC5) on Environmental Geotechnics, Vice-President of the Australasian Chapter of the International Geosynthetics Society (ACIGS), co-chair of the International Geosynthetics Society Education Committee and a member of the Standard Australia committee C20 on Geosynthetics. He is editorial board member of 5 International Journals and very active as a reviewer for several international journals.

Professor Abdelmalek Bouazza has published widely in international journals and refereed conferences and is the author or co-author of more than 180-refereed publications... His skills and experience in the area of waste containment facilities and geosynthetics are well recognized in Australia and abroad. He has been invited to deliver and contribute to several keynote lectures and state of the art reports in international conferences in Africa, Asia, Europe and North America, and delivers short courses on geosynthetics, and liners and cover systems for waste containment facilities on a regular basis locally and internationally. In addition to his academic commitments, Professor Abdelmalek Bouazza gives specialist advice for the industry both nationally and internationally.

GEOTECHNICAL ENGINEERING

Special Issue on Geosynthetics and Sanitary Landfill

Guest Editor: Prof. Abdelmalek Bouazza

TABLE OF CONTENTS

<u>List of Papers</u>	<u>Page</u>
Waste/Lining System Interaction: Implications for Landfill Design and Performance by N. Dixon, K. Zamara1, D.R.V. Jones and G. Fowmes <i>***Please click here to download full paper</i>	1-10
Wrinkling of a Geomembrane on a Compacted Clay Liner on a Slope R. K. Rowe, P. Yang, M.J. Chappel, R.W.I. Brachman , W.A. Take <i>***Please click here to download full paper</i>	11-18
Diffusion of phenolic compounds through an HDPE geomembrane by N. Touze-Foltz, M. Ahari, M. Mendes, C. Barral, M. Gardoni and L. Mazéas <i>***Please click here to download full paper</i>	19-29
Shear-Induced Geomembrane Damage due to Gravel in Underlying Compacted Clay by P. J. Fox, C. Athanassopoulos, S. S. Thielmann, and A. N. Stern <i>***Please click here to download full paper</i>	30-34
Evaluation of mineral barriers against acid rock drainage by A. Naka, T. Katsumi, G. Flores, T. Inui, T. Ohta, T. Urakoshi, and T. Ishihara <i>***Please click here to download full paper</i>	35-42
Improvement on the Performance of Geosynthetic Clay Liners Using Polymer Modified Bentonite by Y. Liu, W. P. Gates and A. Bouazza <i>***Please click here to download full paper</i>	43-45
Effect of Settlement rate and Geogrid reinforcement on the Deformation Behaviour of Soil barriers of Landfill Covers: Centrifuge Study by S. Rajesh and B.V.S. Viswanadham <i>***Please click here to download full paper</i>	46-54
Effect of differential settlements on the sealing efficiency of GCLs compared to CCLs: Centrifuge Study by B.V.S. Viswanadham, S. Rajesh and A. Bouazza <i>***Please click here to download full paper</i>	55-61
Geosynthetic Lining System for Modern Waste Facilities – Experiences in Developing Asia by H. B. Ng and B. Ramsey <i>***Please click here to download full paper</i>	62-67
The Use of Geosynthetics in Major Metropolitan Landfills in Perth, WA – Two Case Studies L. Du Preez, R. Beaman and I. Watkins <i>***Please click here to download full paper</i>	68-70

Cover Photograph: Geosynthetic Waste Containment System and Testing Facilities

GEOTECHNICAL ENGINEERING

PAPER CONTRIBUTIONS

SEAGS & AGSSEA encourage the submission of scholarly and practice-oriented articles to its journal. The journal is published quarterly. Before you submit an article, please review the guidelines stated herein for the manuscript preparation and submission procedures.

Geotechnical Engineering Journal accepts submissions via electronic or postal mail (by sending a CD). The manuscript file (text, tables and figures) in both words and pdf format together with the submission letter should be submitted to the Editor, Geotechnical Engineering Journal, c/o School of Engineering and Technology, Asian Institute of Technology, Room no. 211, AIT Library, Asian Institute of Technology, P.O. Box 4, Klong Luang, Pathumthani 12120, Thailand. Email: seags@ait.ac.th. Papers under review, accepted for publication or published elsewhere are not accepted. The guidelines for author are as follows:-

1. The manuscript including abstract and references must be typed in Times New Roman 9 on one side of A4 paper with a margin of 25 mm on each side.
2. The length of titles must not exceed 70 characters and spaces.
3. The maximum length of papers in the print format of the Journal is 12 two-column pages in single-spaced in Times New Roman 9 including figures and tables. A Journal page contains approximately 1,040 words. Authors can approximate manuscript length by counting the number of words on a typical manuscript page and multiplying that by the number of total pages (except for tables and figures). Add word-equivalents for figures and tables by estimating the portion of the journal page each will occupy when reduced to fit on a 160 mm x 240 mm journal page. A figure reduced to one-quarter of a page would be 260 word-equivalents. When reduced, the figure must be legible and its type size no smaller than 6 point font (after reduction).
4. Figures: Line art should be submitted in black ink or laser printed; halftones and color should be original glossy art. Figures should be submitted at final width i.e. 90 mm for one column and 185 mm for two columns. The font of the legends should be in Times New Roman and should use capital letters for the first letter of the first word only and use lower case for the rest of the words. Background screening and grids are not acceptable.
5. Each table must be typed on one side of a single sheet of paper.
6. All mathematics must be typewritten and special symbols identified. Letter symbols should be defined when they first appear.
7. The paper must end with a set of conclusions.
8. Practical applications should be included, if appropriate.
9. If experimental data and/or relations fitted to measurements are presented, the uncertainty of the results must be stated. The uncertainty must include both systematic (bias) errors and imprecisions.
10. Authors need not be Society members. Each author's full name, Society membership grade (if applicable), present title and affiliation and complete mailing address must appear as a footnote at the bottom of the first page of the paper.
11. Journal papers submitted are subject to peer review before acceptance for publication.
12. Each author must use SI (International System) units and units acceptable in SI. Other units may be given in parentheses or in an appendix.
13. Maximum of five keywords should be given.

14. REFERENCES

- American Petroleum Institute (API) (1993). Recommended Practice for Planning, Designing and Constructing Fixed Offshore Platforms – Working Stress Design, API Recommended Practice 2AWSD (RP 2A-WSD), 20th edition, 1993, p191
- Earth, J.B., and Geo, W.P. (2011) "Asian Geotechnical amongst Authors of Conference Publications", Proceedings of Int. Conference on Asian Geotechnical, publisher, city, pp 133-137.
- Finn WDL and Fujita N. (2002) "Piles in liquefiable soils: seismic analysis and design issues," Soil Dynamics and Earthquake Engineering, 22, Issues 9-12, pp731-742

For additional information, please write to:

*The Secretariat, SEAGS
Room 211, AIT Library
Asian Institute of Technology
P.O. Box 4, Klong Luang
Pathumthani 12120, THAILAND
Email: seags@ait.ac.th
Website: <http://www.seags.ait.ac.th>*

*Ir. Kenny Yee
Hon. Secretary General
Association of Geotechnical Societies in Southeast Asia
c/o Menard Geosystems Sdn Bhd
No. 15-2 Jalan USJ 10/1E
47620 Subang Jaya, Selangor, MALAYSIA
Tel: (60) 03 5632 1581
Fax: (60) 03 5632 1582
E-mail: kenny.yeeks@gmail.com
<http://www.agssea.org/>*

*IEM Training Centre Sdn. Bhd.
No. 33-1A, Jalan SS 52/18
P.O. Box 224 (Jalan Sultan)
46200 Petaling Jaya, SelangorDarul Ehsan, MALAYSIA
Tel: (60) 03 7958 6851
Fax: (60) 03 79582851
E-mail: choy.iemtc@gmail.com*