

GEOTECHNICAL ENGINEERING

Journal of the

SOUTHEAST ASIAN GEOTECHNICAL SOCIETY

&

ASSOCIATION OF GEOTECHNICAL SOCIETIES IN SOUTHEAST ASIA

Sponsored by

ASIAN INSTITUTE OF TECHNOLOGY

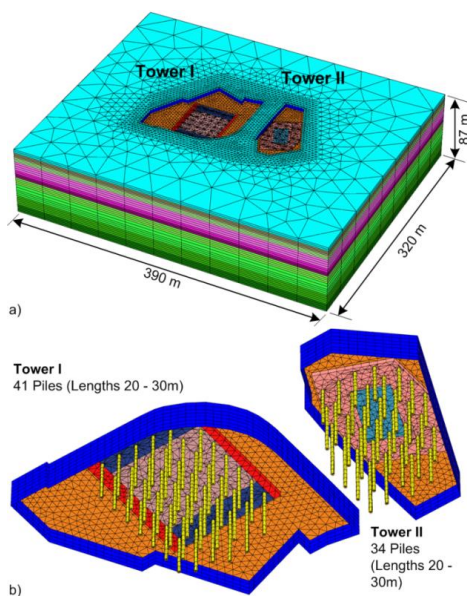


AGSSEA

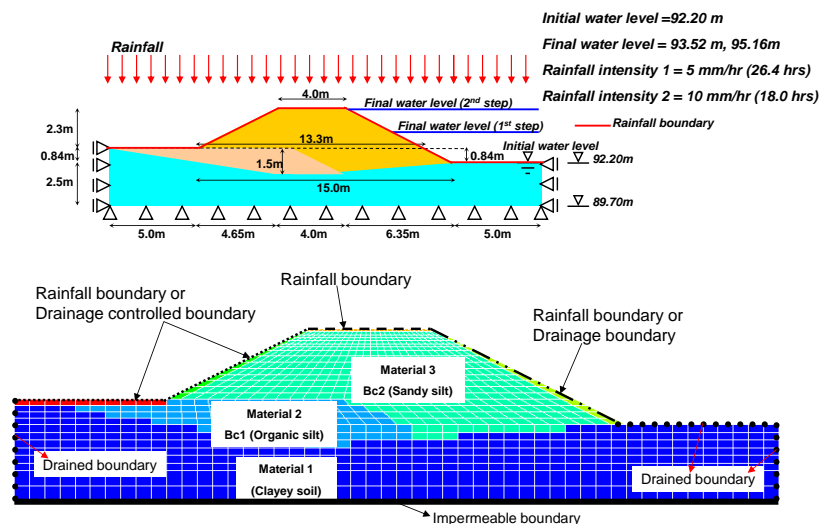


AIT
Asian Institute of Technology

Guest Editors: Prof. Fusao Oka & Prof. Helmut F. Schweiger



Modelling of Pile Raft Foundation
(after Tschuchnigg & Schweiger, 2013)



Numerical Simulation of Rainfall Infiltration on
Unsaturated Soil Slope With Seepage Flow
(after S.Kimoto *et al*, 2013)

GEOTECHNICAL ENGINEERING

Published by the:

SOUTHEAST ASIAN GEOTECHNICAL SOCIETY &
ASSOCIATION OF GEOTECHNICAL SOCIETIES IN SOUTHEAST ASIA

EDITOR-IN-CHIEF

A.S. Balasubramaniam

EDITORS

Teik Aun Ooi

Noppadol Phienwej

CO-EDITORS

Der Wen Chang

D.T.Bergado

Jian Chu

Darius Wanatowski

EDITORIAL ADVISERS

A.S. BALASUBRAMANIAM, Australia

E.W. BRAND, U.K.

WEN HUI TING, Malaysia

SURACHAT SAMBHANDHARAKSA, Thailand

CHUNG TIEN CHIN, Taiwan

DENNES T. BERGADO, Philippines

ZA-CHIEH MOH, Taiwan

CHIN-DER OU, Taiwan

JOHN CHIEN-CHUNG LI, Taiwan

KWET YEW YONG, Singapore

PEDRO SECO E PINTO, Portugal

H.G. POULOS, Australia

SEAGS GENERAL COMMITTEE 2010 - 2013

DR. TEIK AUN OOI (President)

DR. ZA-CHIEH MOH (Founding President)

PROF. KWET YEW YONG (Past President)

DR. WEN HUI TING (Past President)

DR. CHIN DER OU (Past President)

IR. YEW WENG YEE

IR. ENG CHOY LEE

PROF. HUNG-JIUN LIAO

PROF. MEEI-LING LIN

PROF. T. LIANG

DR. NOPPADOL PHIENWEJ (Hon. Secretary General)

DR. CHUNG TIEN CHIN (Immediate Past President)

DR. JOHN CHIEN-CHUNG LI (Past President)

PROF. A.S. BALASUBRAMANIAM (Past President)

PROF. JIAN CHU

IR. KENNY K.S. YEE

PROF. DER-WEN CHANG

DR. SOKTAY LIM

PROF. DENNES T BERGADO

MR. VIENGVISA NGUEN

Geotechnical Engineering is the official journal of the Southeast Asian Geotechnical Society and the Association of Geotechnical Societies in Southeast Asia. It is published four times a year in March, June, September and December and is free to members of the Society. The annual subscription rate for non-members is **US\$30** to individuals and **US\$50** to libraries and companies. Back issues are available. Cheques or money orders should be made payable to the Asian Institute of Technology. Membership application forms and other details can be obtained from:

*The Secretariat, SEAGS
Room 211, AIT Library
Asian Institute of Technology
P.O. Box 4, Klong Luang
Pathumthani 12120, Thailand
Website: <http://www.seags.ait.ac.th>*

***Ir. Kenny Yee
Hon. Secretary General
Association of Geotechnical Societies in Southeast Asia
c/o Menard Geosystems Sdn Bhd
No. 15-2 Jalan USJ 10/1E
47620 Subang Jaya, Selangor, MALAYSIA
Tel: (60) 03 5632 1581
Fax: (60) 03 5632 1582
E-mail: kenny@menard-asia.com
<http://www.agssea.org>***

GEOTECHNICAL ENGINEERING

AGSSEA COUNCIL SESSION 2010 - 2013

Chairman:	PROF. KWET YEW YONG	
Hon. Secretary General:	IR. KENNY K S YEE	
Hon. Treasurer:	PROF. CHARLES W.W. NG	
Immediate Past Chairman:	IR. DR. TEIK AUN OOI	
Hon. Founder Chairman:	DR. ZA-CHIEH MOH	
Council Members:	DR. NOPPADOL PHIENWEJ	Hon. Secretary General SEAGS
	IR. YEW WENG YEE	SEAGS
	PROF. NGUYEN TRUONG TIEN	President, VSSMGE
	MR. MAI TRIEU QUANG	Dep. Gen. Secretary, VSSMGE
	IR TONY CHEUNG	President, HKGES (2012-2014)
	PROF. GEORGE THAM	Gen. Secretary, HKGES
	MR. CHUA TONG SENG	President, GeoSS 2012-2013
	PROF. CHUN FAI LEUNG	Treasurer, GeoSS
	DR. SUTTISAK SORALUMP	President, TGS
	DR. APINITI JOTISANKASA	Gen. Secretary, TGS
	PROF YUNG-SHOW FANG	President, CTGS
	PROF. SAN-SHYAN LIN	Immediate Past President, CTGS
	PROF. MASYHUR IRSYAM	President, HATTI, Indonesia
	DR. PINTO TUA SIMATUPANG	Gen. Secretary, HATTI
Nominated &	PROF. JIAN CHU	Singapore
Co-opted Members:	PROF. H. J. LIAO	Taiwan
	DR. CHUNG-TIEN CHIN	Taiwan
	PROF. TRINH MINH THU	VSSMGE
Advisors:	DR. WEN HUI TING	Malaysia
	DR. SIN FATT CHAN	Malaysia
	PROF. A.S. BALASUBRAMANIAM	Australia
	DR. JOHN CHIEN-CHUNG LI	Taiwan
	PROF. SURACHAT SAMBHANDHARAKSA	Thailand
	PROF. DENNES T. BERGADO	Philippines
	IR. RAYMOND CHAN	Hong Kong
	DR. JACK PAPPIN	Hong Kong

Ir. Kenny Yee
Hon. Secretary General
Association of Geotechnical Societies in Southeast Asia
c/o Menard Geosystems Sdn Bhd
No. 15-2 Jalan USJ 10/1E
47620 Subang Jaya, Selangor, MALAYSIA
Tel: (60) 03 5632 1581
Fax: (60) 03 5632 1582
E-mail: kenny@menard-asia.com

IEM Training Centre Sdn. Bhd.
No. 33-1A, Jalan SS 52/18
P.O. Box 224 (Jalan Sultan)
46200 Petaling Jaya, Selangor Darul Ehsan, MALAYSIA
Tel: (60) 03 7958 6851
Fax: (60) 03 7958 2851
E-mail: choy.iemtc@gmail.com

GEOTECHNICAL ENGINEERING

EDITORIAL PANEL

Prof. D.T. Bergado
Asian Institute of Technology
Bangkok Thailand

Dr. R.P. Brenner
Weinfelden
Switzerland

Prof. D.W. Chang
Tamkang University
Tamsui Taiwan

Prof. Jian Chu
Iowa State University
Iowa U.S.A

Prof. Fuping Gao
Institute of Mechanics
Chinese Academy of Sciences
Beijing China

Dr. Ivan Gratchev
Griffith University Gold Coast Campus
Gold Coast Queensland Australia

Dr. Wei-Dong Guo
University of Wollongong
Wollongong
Australia

Dr. Abuel-Naga Hossam
The University of Manchester
Manchester U.K.

Prof. Dong-Sheng Jeng
Griffith University Gold Coast Campus
Gold Coast
Queensland Australia

Prof. A (Malek) Bouazza
Monash University
Melbourne Australia

Prof. Jin-Chun Chai
Saga University
Saga, Japan

Prof. Y.K. Chow
National University of Singapore, NUS
Singapore

Prof. Roger Frank
Université Paris-Est
École des Ponts ParisTech
Laboratoire Navier-geotechnical team
(CERMES)
Marne-la-Vallée cedex 2 France

Prof. Christophe Gaudin
University of Western Australia
Perth Australia

Prof. Jürgen Grabe
Karlsruhe University
Germany

Prof. Jie Han
The University of Kansas
Lawrence, Kansas
USA

Prof. B. Indraratna
University of Wollongong
Wollongong Australia

Dr. Apinit Jotisankasa
Department of Civil Engineering
Kasetsart University
Bangkok Thailand

Prof. C. H. Juang
Clemson University
U.S.A.

Dr. Eng Choon Leong
Nanyang Technological University
Singapore

Prof. Robert Liang
Akron University
U.S.A.

Prof. San-Shyan Lin
Taiwan Ocean University
Keelung Taiwan

Prof. Tatsunori Matsumoto
Kanazawa University
Kakuma-machi, Kanazawa Japan

Prof. Fusao Oka
Kyoto University, Kyoto Japan

Prof. Charles W. W. Ng
The Hong Kong University of Science
and Technology
Kowloon Hong Kong

Dr. T.A. Ooi
The Institution of Engineers, Malaysia
Kuala Lumpur Malaysia

Prof. C.Y. Ou
National Taiwan University of Science and
Technology
Taipei, Taiwan

Prof. Anand J. Puppala
The University of Texas at Arlington
Texas U.S.A
Professor Paulus P. Rahardjo
Parahyangan Catholic University
Indonesia

Prof. Helmut F. Schweiger
Graz University of Technology
Graz
Austria

Prof. Poul V. Lade
The Catholic University of America
Washington, D.C., U.S.A.

Prof. Chun-Fai Leung
National University of Singapore
Singapore

Prof. Meei-Ling Lin
Department of Civil Engineering
National Taiwan University
Taipei, Taiwan

Mr. Tom Lunne
Norwegian Geotechnical Institute
Oslo, Norway

Prof. Akira Murakami
Kyoto University
Kyoto Japan

Dr. Farrokh Nadim
Technical Director
Norwegian Geotechnical Institute (NGI)
Oslo, Norway

Dr. Erwin Oh
Griffith University Gold Coast Campus
Gold Coast
Queensland Australia

Dr. N. Phienwej
Asian Institute of Technology
Bangkok Thailand

Prof. Harianto Rahardjo
Nanyang Technology University
Singapore

Dr. Shinji Sassa
Port and Airport Research Institute
Nagase Yokosuka Japan

Prof Shui-Long Shen
Shanghai Jiao Tong University
Shanghai 200240, China

Prof. Zhen-Yu Yin
Shanghai Jiao Tong University
Shanghai 200240, China

Prof. D. N. Singh
Indian Institute of Technology Bombay
Powai, Mumbai, India

Prof. Mitsutaka Sugimoto
Nagaoka University of Technology
Nagaoka Japan

Prof. Ikuo Towhata
University of Tokyo
Tokyo Japan

Prof. B.V.S. Viswanadham
Indian Institute of Technology Bombay
Powai, Maharashtra, India

Dr. Dariusz Wanatowski
The University of Nottingham
Ningbo
China

Prof. Li-zhong Wang
Zhejiang University
China

Dr. Albert T. Yeung
University of Hong Kong (HKU)
Hong Kong

Prof. Jian-Hua Yin
Hong Kong Polytechnic University
Hong Kong

GEOTECHNICAL ENGINEERING

GUEST EDITORS

Prof. Jie Han (March 2011)

Prof. Tatsunori Matsumoto (June 2011)
Prof. Der-Wen Chang

Prof. Chang Yu Ou (September 2011)

Dr. Dariusz Wanatowski (December 2011)

Prof. Charles W W Ng (March 2012)
Dr. Apiniti Jotisankasa

Prof. Ikuo Towhata (June 2012)
Prof. Der-Wen Chang
Dr. Ivan Gratchev

Prof. Abdelmalek Bouazza (September 2012)

Tom Lunne (December 2012)
Prof. Don de Groot

Der-Wen Chang (March 2013)
Dariusz Wanatowski

Akira Murakami (June 2013)
Dariusz Wanatowski

PAST EDITORS

Dr. E.W. Brand (1970 – 1973)

Dr. E.W. Brand, Prof. A.S. Balasubramaniam (1974 – 1976)

Dr. E.W. Brand, Dr. V.K. Campbell (1977 – 1978)

Dr. V.K. Campbell (1978 – 1980)

Mr. J.S. Younger (1980 – 1985)

Mr. D.R. Greenway (1986 – 1987)

Mr. P.G.D. Whiteside (1988 – 1989)

Mr. C.A.M. Franks (1990 – 1995)

Prof. D.T. Bergado (1996 – 2001)

Dr. N. Phienwej (2002 -2010)

GEOTECHNICAL ENGINEERING

FOREWORD

I am very pleased to be the Leader of the Team of Guest Editors on this Special Issue on the Role of Analyses in Geotechnical Engineering. The co-editors are Prof. Helmut and Prof. Muhunthan in seeking contributions. Dr. Dariusz Wanatowski also helped in Proof Reading the articles.

There are nine papers in this issue and they are: Numerical Simulation of the Rainfall Infiltration on Unsaturated Soil Slope Considering a Seepage Flow; Seismic Response of Gravity-Cantilever Retaining Wall Backfilled with Shredded Tire;

Numerical modeling of lateral response of long flexible piles in sand; New Sampling Algorithm in Particle Filter for Geotechnical Analysis; Comparison of deep foundation systems using 3D finite element analysis employing different modeling techniques; Application of a constitutive model for swelling rock to tunnelling; Finite element modelling of seismic liquefaction in soils; Random Wave-Induced Seabed Responses around Breakwater Heads; and Influence of brittle property of cement treated soil on undrained bearing capacity characteristics of the ground.

The authors of these papers are: S.Kimoto, F.Oka and E.Garcia; N. Ravichandran and E. L. Huggins; Md. Iftekharuzzaman and Bipul C Hawlader; T. Shuku, S. Nishimura, K. Fujisawa and A. Murakami ; F. Tschuchnigg & H.F. Schweiger; B. Schadlich, T. Marcher and H.F. Schweiger; V. Galavi, A. Petalas and R.B.J. Brinkgreve; Y Zhang, D-S Jeng, Z-W Fu and J Ou and S. Yamada, T. Noda, A. Asaoka and T. Shina.

Finally, I hope this Special Issue would be of great values to the Readers of Geotechnical Engineering Journal, whether they are in research or practice.

Fusao Oka

Guest Editor

Editorial Team, SEAGS/AGSSEA J. of Geotechnical Engineering

Professor Emeritus of Kyoto University

Kyoto, Japan

GEOTECHNICAL ENGINEERING

ACKNOWLEDGEMENT

It is a pleasure to thank Prof. Fusao Oka the Team leader of our Guest Editors for this September Issue on the Role of Analyses in Geotechnical Engineering Practice. The co-editors are Prof. Helmut Schweiger and Prof. Muhunthan Balasingham for acquiring papers from Europe & North America respectively. Dr. Dariusz Wanatowski helped the proof reading at the final stage.

Grateful acknowledgement is made to the contributing authors : :S.Kimoto, F.Oka and E.Garcia; N. Ravichandran and E. L. Huggins; Md. Iftekharuzzaman and Bipul C Hawlader; T. Shuku, S. Nishimura, K. Fujisawa and A. Murakami ; F. Tschuchnigg & H.F. Schweiger; B. Schadlich, T. Marcher and H.F. Schweiger; V. Galavi, A. Petalas and R.B.J. Brinkgreve; Y Zhang, D-S Jeng, Z-W Fu and J Ou and S. Yamada, T. Noda, A. Asaoka and T. Shina.

There are nine excellent papers related: Numerical Simulation of the Rainfall Infiltration on Unsaturated Soil Slope Considering a Seepage Flow; Seismic Response of Gravity-Cantilever Retaining Wall Backfilled with Shredded Tire;

Numerical modeling of lateral response of long flexible piles in sand; New Sampling Algorithm in Particle Filter for Geotechnical Analysis; Comparison of deep foundation systems using 3D finite element analysis employing different modeling techniques; Application of a constitutive model for swelling rock to tunnelling; Finite element modelling of seismic liquefaction in soils; Random Wave-Induced Seabed Responses around Breakwater Heads; and Influence of brittle property of cement treated soil on undrained bearing capacity characteristics of the ground.

Also, the editorial works for the December Issue is now well advanced and the valuable assistance from our International Geotechnical Community is gratefully acknowledged.

K. Y. Yong
N . Phienwej
T. A. Ooi
A. S. Balasubramaniam

GEOTECHNICAL ENGINEERING

SEPTEMBER 2013 SPECIAL ISSUE ON NUMERICAL ANALYSES

Guest Editors:

Prof. Fusao Oka & Prof. Helmut F. Schweiger

Prof. Fusao Oka

Prof. Oka is Professor emeritus of Kyoto University and JSPS scientific researcher of Kyoto University. He had been Professor of Civil and Earth Resources Engineering at Kyoto University in Japan. He has many years of experience in geomechanics with special emphasis on constitutive modeling of geomaterials, liquefaction analysis, strain localization problems and experimental works, numerical modeling of multi-phase materials such as chemo-thermo-hydro-mechanical modeling of Methane hydrate containing ground. His research expertise covers engineering applications such as soil liquefaction, consolidation and excavation problems with theoretical and experimental approach. Prof. Oka has particular interest in the viscoplastic modeling of geomaterials and related strain localization behavior. He gave a special lecture at the plenary session of 16th ICSMGE on computational geomechanics in 2005. He has published more than 200 papers in this field and has received many awards from the Japanese Geotechnical society (2005), Japan Society of Civil Engineers (1993), and IACMAG (1997, 2006). He has been serving as a chair of TC34 of ISSMGE on Prediction and Simulation Methods in Geomechanics and chaired the 4th International Workshop on Strain Localization and Bifurcation Theory for Soils and Rocks (1997), the ISSMGE International Symposium on Deformation and Progressive Failure in Geomechanics (1997), and the International Symposium on Prediction and Simulation Methods for Geohazard Mitigation by JGS and ISSMGE (2009), the 46th. Japan National conference on geotechnical Engineering (2011). He is now chairing the organizing committee of the 14th ICIACMAG 2014 Kyoto. He is currently serving as EBM of the *International Journal of Numerical and Analytical Methods in Geomechanics, Computers and Geotechnics* and the *International Journal of Geomechanics and Geoengineering*.

Prof. Helmut F. Schweiger

(Graz University of Technology)

Prof. Helmut F. Schweiger is Head of the Computational Geotechnics Group at the Institute for Soil Mechanics and Foundation Engineering of the Graz University of Technology in Austria and has over 25 years of experience in developing and applying numerical methods in geomechanics. He obtained his Ph.D. from the University of Wales, Swansea, UK. His main research interests are the development of multilaminar models for soils, application of Random Set Theory to finite element analysis and the assessment of the influence of the constitutive model for solving practical problems, in particular deep excavations, deep foundations and tunnels. Application of numerical methods in accordance with the design approaches defined in Eurocode7 is another topic he is involved in. His group was a member of several research projects funded by the European Commission. His research is reflected in more than 130 publications in International Journals and Conference Proceedings and invitations to keynote and plenary lectures at International Conferences on Soil Mechanics and Computational Geotechnics. He serves on a number of editorial boards of international journals and was chairman of 6th European Conference on Numerical Methods in Engineering. As a member of several committees Helmut is involved in formulating guidelines and recommendations for the use of finite elements in practical geotechnical engineering. He lectures on courses on Computational Geotechnics around the world and has been a member of numerous Ph.D. committees. In 2005 he received the "Excellent Contributions Award Regional" of the International Association for Computer Methods and Advances in Geomechanics and the "Best Paper Award" of the Japanese Geotechnical Society and in 2010 the "George Stephenson Medal" of the Institution of Civil Engineers, London, UK for a paper published in *Geotechnique*.

GEOTECHNICAL ENGINEERING

September 2013: Numerical Analyses

Guest Editors:

Prof. Fusao Oka & Prof. Helmut F. Schweiger

TABLE OF CONTENTS

<u>List of Papers</u>	<u>Page</u>
Numerical Simulation of the Rainfall Infiltration on Unsaturated Soil Slope Considering a Seepage Flow By S.Kimoto, F.Oka and E.Garcia <i>***Please click here to download full paper</i>	1 – 13
Seismic Response of Gravity-Cantilever Retaining Wall Backfilled with Shredded Tire By N. Ravichandran and E. L. Huggins <i>***Please click here to download full paper</i>	14 – 24
Numerical modeling of lateral response of long flexible piles in sand By Md. Iftekharuzzaman and Bipul C Hawlader <i>***Please click here to download full paper</i>	25 – 31
A New Sampling Algorithm in Particle Filter for Geotechnical Analysis By T. Shuku, S. Nishimura, K. Fujisawa and A. Murakami <i>***Please click here to download full paper</i>	32 – 39
Comparison of deep foundation systems using 3D finite element analysis employing different modeling techniques By F. Tschuchnigg & H.F. Schweiger <i>***Please click here to download full paper</i>	40 – 46
Application of a constitutive model for swelling rock to tunnelling By B. Schadlich, T. Marcher and H.F. Schweiger <i>***Please click here to download paper full</i>	47 – 54
Finite element modelling of seismic liquefaction in soils By V. Galavi, A. Petalas and R.B.J. Brinkgreve <i>***Please click here to download paper full</i>	55 – 64
Random Wave-Induced Seabed Responses around Breakwater Heads By Y Zhang, D-S Jeng, Z-W Fu and J Ou <i>***Please click here to download paper full</i>	65 – 83
Influence of brittle property of cement treated soil on undrained bearing capacity characteristics of the ground By S. Yamada, T. Noda, A. Asaoka and T. Shina <i>***Please click here to download full paper</i>	84 – 93

Cover Photographs:

- Modelling of Pile Raft Foundation (after Tschuchnigg & Schweiger, 2013)
- Numerical Simulation of Rainfall Infiltration on Unsaturated Soil Slope With Seepage Flow (after S.Kimoto *et al*, 2013)

GEOTECHNICAL ENGINEERING

PAPER CONTRIBUTIONS

SEAGS & AGSSEA encourage the submission of scholarly and practice-oriented articles to its journal. The journal is published quarterly. Before you submit an article, please review the guidelines stated herein for the manuscript preparation and submission procedures.

Geotechnical Engineering Journal accepts submissions via electronic or postal mail (by sending a CD). The manuscript file (text, tables and figures) in both words and pdf format together with the submission letter should be submitted to the Editor, Geotechnical Engineering Journal, c/o School of Engineering and Technology, Asian Institute of Technology, Room no. 211, AIT Library, Asian Institute of Technology, P.O. Box 4, Klong Luang, Pathumthani 12120, Thailand. Email: seags@ait.ac.th. Papers under review, accepted for publication or published elsewhere are not accepted. The guidelines for author are as follows:-

1. The manuscript including abstract and references must be typed in Times New Roman 9 on one side of A4 paper with a margin of 25 mm on each side.
2. The length of titles must not exceed 70 characters and spaces.
3. The maximum length of papers in the print format of the Journal is 12 two-column pages in single-spaced in Times New Roman 9 including figures and tables. A Journal page contains approximately 1,040 words. Authors can approximate manuscript length by counting the number of words on a typical manuscript page and multiplying that by the number of total pages (except for tables and figures). Add word-equivalents for figures and tables by estimating the portion of the journal page each will occupy when reduced to fit on a 160 mm x 240 mm journal page. A figure reduced to one-quarter of a page would be 260 word-equivalents. When reduced, the figure must be legible and its type size no smaller than 6 point font (after reduction).
4. Figures: Line art should be submitted in black ink or laser printed; halftones and color should be original glossy art. Figures should be submitted at final width i.e. 90 mm for one column and 185 mm for two columns. The font of the legends should be in Times New Roman and should use capital letters for the first letter of the first word only and use lower case for the rest of the words. Background screening and grids are not acceptable.
5. Each table must be typed on one side of a single sheet of paper.
6. All mathematics must be typewritten and special symbols identified. Letter symbols should be defined when they first appear.
7. The paper must end with a set of conclusions.
8. Practical applications should be included, if appropriate.
9. If experimental data and/or relations fitted to measurements are presented, the uncertainty of the results must be stated. The uncertainty must include both systematic (bias) errors and imprecisions.
10. Authors need not be Society members. Each author's full name, Society membership grade (if applicable), present title and affiliation and complete mailing address must appear as a footnote at the bottom of the first page of the paper.
11. Journal papers submitted are subject to peer review before acceptance for publication.
12. Each author must use SI (International System) units and units acceptable in SI. Other units may be given in parentheses or in an appendix.
13. Maximum of five keywords should be given.

14. REFERENCES

- American Petroleum Institute (API) (1993). Recommended Practice for Planning, Designing and Constructing Fixed Offshore Platforms – Working Stress Design, API Recommended Practice 2AWSD (RP 2A-WSD), 20th edition, 1993, p191
- Earth, J.B., and Geo, W.P. (2011) "Asian Geotechnical amongst Authors of Conference Publications", Proceedings of Int. Conference on Asian Geotechnical, publisher, city, pp 133-137.
- Finn WDL and Fujita N. (2002) "Piles in liquefiable soils: seismic analysis and design issues," Soil Dynamics and Earthquake Engineering, 22, Issues 9-12, pp731-742

For additional information, please write to:

The Secretariat, SEAGS
Room 211, AIT Library
Asian Institute of Technology
P.O. Box 4, Klong Luang
Pathumthani 12120, THAILAND
Email: seags@ait.ac.th
Website: <http://www.seags.ait.ac.th>

Ir. Kenny Yee
Hon. Secretary General
Association of Geotechnical Societies in Southeast Asia
c/o Menard Geosystems Sdn Bhd
No. 15-2 Jalan USJ 10/1E
47620 Subang Jaya, Selangor, MALAYSIA
Tel: (60) 03 5632 1581
Fax: (60) 03 5632 1582
E-mail: kenny@menard-asia.com
Website: <http://www.agssea.org>

IEM Training Centre Sdn. Bhd.
No. 33-1A, Jalan SS 52/18
P.O. Box 224 (Jalan Sultan)
46200 Petaling Jaya, SelangorDarul Ehsan, MALAYSIA
Tel: (60) 03 7958 6851
Fax: (60) 03 79582851
E-mail: choy.iemtc@gmail.com
Website: <http://www.iemtc.com>