

NEWS

Arrigo Croce Lecture

To all members of ISSMGE

Roma, July 15th 2011

Dear members of the ISSMGE,

Since 2000 the Italian Geotechnical Society (Associazione Geotecnica Italiana - AGI) has been organising every year a series of conferences dedicated to the memory of the late Professor Arrigo Croce, who was the first professor of soil mechanics in Italy, President of AGI, vice-President for Europe of the ISSMFE and co-founder of the technical committee devoted to the geotechnical aspects of preservation of historic sites.

The first Arrigo Croce Lecture was delivered by Prof. Carlo Viggiani, followed by Prof. Michele Jamiolkowski, Prof. Ruggiero Jappelli, Prof. Giovanni Calabresi, Prof. Giovanni Barla, Prof. Beniamino D'Elia, Prof. Giuseppe Ricceri, Prof. Luciano Picarelli and Prof. Alberto Burghignoli.

Also written versions of past lectures have been published in the Rivista Italiana di Geotecnica. These papers (except the last two, not yet available on the site) can be downloaded from the website of AGI (www.associazionegeotecnica.it), following the path "RIG", "Croce Lecture".



Photograph of Prof. Arrigo Croce

Last year, the Council of AGI decided to open the event also to international people with very high qualification in the field of soil mechanics, rock mechanics and geotechnical engineering.

NEWS**Arrigo Croce Lecture (continued)**

I am very happy to announce you that the next lecturer will be:

Prof. Eduardo ALONSO
Universitat Politècnica de Catalunya

who decided to give a lecture with the very stimulating title:

Crystal Growth in Geotechnics

Details of this lecture are presented below.

The Conference is scheduled on December 15th, 2011 in Rome, at 10.30 am in the Conference Room of CNR (National Research Council). After the lecture, a light buffet will be provided for exchanging greetings for the coming new year.

The lecture is free of charge and all members of ISSMGE are welcome. We ask you to fill-in the registration form attached to the present letter and send it by e-mail to the Secretariat of the Italian Geotechnical Society (agiroma@iol.it). The maximum number of 300 people will be allowed to participate; hence the rule of “first-come, first-service” will be applied.

I hope to see many of you at this occasion, to attend the interesting Lecture of Prof. Alonso and have the chance of visiting Rome, a very pleasant town also in the period before Christmas.

With my best regards,

Stefano Aversa
President of the Associazione Geotecnica Italiana

CRYSTAL GROWTH IN GEOTECHNICS
Eduardo Alonso

Lilla tunnel and two long viaducts (Pont de Candí and Pallaressos), all of them being parts of the high speed Madrid-Barcelona railway link, have suffered in recent years extreme swelling phenomena immediately after being built. In all of them the origin of the observed swelling is crystal growth. The concerned crystals were gypsum crystals in the case of Lilla tunnel and Pont de Candí viaduct and ettringite-thaumasite crystals in the case of Pallaressos.

Lilla tunnel, 2km long, was excavated in hard sulphate rich claystones of Eocene age by a traditional head and bench scheme using blasting and a conventional support. The tunnel floor experienced vertical displacement reaching in some sections 80 cm in a few months. As a result, the tunnel was heavily instrumented (continuous extensometers, pressure cells, floor displacement monitoring) and large diameter samples were taken for laboratory testing. In addition, alternative support systems were tested “in situ” with the purpose of



Prof. Eduardo Alonso

NEWS

Arrigo Croce Lecture (continued)

selecting the best design for the repair of the tunnel. A circular cross section lined with a high strength concrete ring, heavily reinforced, was eventually built at a high cost. Maximum pressures recorded so far reach 6 MPa.

Pont de Candí Viaduct is founded on large diameter piles of 20 m in length socketed on hard anhydritic claystones. It has suffered a sustained heave dating from the end of construction at a rate of 1-2 mm/month. An “active layer” was detected and monitored by continuous extensometers. It is located below pile’s tip. Therefore piles and viaduct are heaving as a single unit.

In Pallaressos Viaduct the two access embankments, 18m high, have experienced severe heaving which has required a continuous levelling work of the rail tracks. The “active layer” in this case is located in the upper 8 m of the embankments. The swelling induces a longitudinal compression of the bridge and abutments resulting in severe structural damage.

The three outlined cases are rather exceptional. Expansive phenomena in tunnels around the Alps in Triassic sulphated rocks are well known. But Lilla tunnel reached extreme swelling pressures and swelling displacements. No similar phenomena have been found in the literature for the additional two cases.

The lecture will describe the fundamental observations carried out “in situ” and the attempts to reproduce the swelling phenomena in the laboratory. Models were developed to simulate the hydro-mechanical and chemical interactions, and the crystal growth as well as its application to real conditions will be also presented and compared with real observations.

The lecture will end with a description of the mitigation measures adopted to protect the damaged structures and to allow the safe operation of the high speed railway line.



Gypsum crystals growing in a discontinuity in Lilla claystone

NEWS

Arrigo Croce Lecture (continued)



Lilla tunnel. Heave of the floor



The viaduct of Pont de Candi being repaired

NEWS

Arrigo Croce Lecture (continued)



Pallaressos Viaduct and one of the access embankments affected by thaumasite crystal growth



Damage in Pallaressos structure

NEWS**Arrigo Croce Lecture (continued)****X ARRIGO CROCE LECTURE**

Professor **Eduardo Alonso**
 Universitat Politècnica de Catalunya - Barcelona (Spain)

Crystal growth in Geotechnics

Thursday December 15th 2011, 10:30 am
 CNR Conference Room (National Research Council) - Via dei Marrucini snc - Roma - Italy

Please, fill in the registration form and send to:

AGI Secretariat: agiroma@iol.it.

A maximum number of 300 people will be allowed therefore first-come first-service will be applied.
 Acceptance of registration will be sent by December 7th 2011.

REGISTRATION FORM

Name and Family name _____

Full address _____

Tel _____ Fax _____

E-mail _____

Date _____ Signature _____

We hereby inform you that, in conformity with Italian dlgs n.196/2003, the information you provide filling in this form, will be collected in a data bank and may be processed, also making use of third parties in compliance with the above mentioned law, for the purpose of commercial information and anonymous statistical processing. Please, note that you are entitled to exercise the right specified in the above mentioned dlgs.

Date _____ Signature _____

NEWS

INTERNATIONAL SYMPOSIUM ON GEOTECHNICAL ENGINEERING FOR DISASTER PREVENTION AND REDUCTION

This conference took place from July 26 to 29, 2011, at Far Eastern State Transport University in Khabarovsk, Russia (Photos 1 to 2). It was organized by Professor Sergey A. Kudryavtsev, General Secretary of Organizing Committee of 4IGS under auspices of Asian Technical Committee 3 for geotechnical natural disasters (ATC3), Russian Geotechnical Society and Kazakhstan Geotechnical Society. As shown in its title, this series of conference is intended to exchange and disseminate in Far East the up-to-date knowledge and experience both internationally and domestically. The first conference was realized in 2005 in Astana of Kazakhstan by Prof. Askar Zhussupbekov (Eurasian National University, Kazakhstan) and Prof. Takaji Kokusho (Chuo University, Tokyo, Japan) under the auspices of ATC3 for geotechnical natural disasters and this frame work has been maintained during the following occasions in Yuzno-Sakhalinsk (2007, Russia) and Harbin (2009, China). This year, the Khabarovsk conference attracted more than 150 paper submissions and about 180 participants from China, Korea, Japan, India, Poland, Russia, and Kazakhstan (Photo 1).

The opening ceremony was led by Prof. Boris Dynkin who is the rector of the Far Eastern State Transport University (Photo 4) and keynote lectures together with oral presentations followed. The discussed topics included earthquakes and landslides together with a special emphasis on soil freezing. Photographs below show some aspects of the conference.



Photo 1 Group photograph of participants



Photo 2 Conference going on



Photo 3 Dinner cruise on Amur River

The main attention is given to sharing knowledge on reliable preventive geotechnical measures directed towards damage minimization when the available information is either incomplete or inconsistent.

NEWS

INTERNATIONAL SYMPOSIUM ON GEOTECHNICAL ENGINEERING FOR DISASTER PREVENTION AND REDUCTION (continued)

International experts are invited to take part in the Symposium, present keynote and special lectures, make oral and poster reports, exhibit the equipments and devices, introduce various achievements in the geotechnical engineering field, and also discuss the lessons learned from recent disasters in order to share the modern knowledge and technologies implemented into practice for damage mitigation. As a result it is expected to receive papers dealing with the improved practical approaches and engineering solutions, unified new construction, codes and regulations for the purpose of preventing and reducing the disasters before they strike again.



Photo 4 Opening ceremony of 4IGS, 2011: from left to right: Dr. V.D. Kalashnikov- Vice-Chairman of Government of Khabarovsk Krai , Minister of Economic Development and Foreign Policy of Khabarovsk Krai; Prof. B.E. Dynkin- Rector of Far Eastern State Transport University; Prof. Askar Zhussupbekov-VP of ISSMGE for Asia



Photo 5 Prof. Askar Zhussupbekov (VP of ISSMGE for Asia) awarded of Dr. H. Toyota (Nagaoka University of Technology, Japan) for his excellent Keynote Lecture



Photo 6 Prof. E.C. Shin (University of Incheon, Korea)-Chairman of Section 1 “Geomonitoring, monitoring the geodynamic processes, prognoses of natural phenomena awarded of Prof. Ikuo Towhata (Appointed Board Member of ISSMGE, University of Tokyo, Japan) for his excellent Special Lecture



Photo 7 Prof. H. Hazarika (Kyushu University, Fukuoka, Japan) presented his book “Soil Mechanics Fundamentals” to General Secretary of 4IGS, 2011 Prof. Sergey Kudryavtsev (for Library of Far Eastern State Transport University, Khabarovsk, Russia)

NEWS

INTERNATIONAL SYMPOSIUM ON GEOTECHNICAL ENGINEERING FOR DISASTER PREVENTION AND REDUCTION (continued)

The Organizing Committee of 4IGS invited Prof. M. Okamura (Ehime, Japan) to present a Keynote Lecture 1 "In-situ Air Injection as a Liquefaction Countermeasure." Dr. H. Toyota (Nagaoka, Japan) gave Keynote Lecture 2 (Photo 5) about "Observation of Slope Failures during Natural Disasters - Case study in the Chuetsu Area of Niigata, Japan." Dr. G. Wang (Kyoto, Japan) gave Keynote Lecture 3 "Role of Pore Fluid Pressure on the Initiation and Movement of Fluidized Landslides." Dr. A.T. Bekker (Vladivostok, Russia) gave Keynote Lecture 4 "Specificity of the Coastal Construction in the Far East." Keynote Lecture 5 was presented by Prof. I. Saharov and Prof. V. Paramonov (Saint-Petersburg, Russia) on the decision of a spatial problem of freezing and heaving for the building which have not been protected for the winter period.

The Keynote Lecture 6 "Dynamic Response Analysis of Reinforced Embankment Dam and Buried Pipe Using Kinematic Hardening Constitutive Model" was presented by Prof. T. Tanaka (The Japan Association of Rural Resource Recycling Solutions, Japan). Prof. Z. Maocai (Harbin, China) gave Keynote Lecture 7 "The Study on Key Geotechniques of Stockman Nevsky Centre Project in Saint Petersburg City." Keynote Lecture 8 "An Analysis of Frost Penetration Depth for Road Design by Field Monitoring in Korea" was delivered by Prof. E.C. Shin, J.S. Lee, and G.T. Cho (Incheon, Korea). Keynote Lecture 9 "Interaction Research between the Soil Ground and a Pile Arranged by Displacement Technology" was presented by Prof. Askar Zhussupbekov (Columbia University, New York, USA and Eurasian National University, Astana, Kazakhstan).

Prof. T. Kozłowski (Kielce University of Technology, Poland) gave Keynote Lecture 10 entitled "Characteristic Temperatures of Phase Transitions in Soil-Water Systems below 0°C." Keynote Lecture 11 "An Approach of Risk Analysis for Shallow Landslide over a Wide Area" was delivered by Prof. G. Chen (Kyushu, Japan). Keynote Lecture 12 "Towards Sustainable Countermeasure against Liquefaction - A Smart Geomaterial and Its Evaluation" was presented by Prof. H. Hazarika (Kyushu University, Fukuoka, Japan); see Photo 7.

Also Special lectures were given as what follows.

Special Lecture 1: Assessment of seismic damage extent by dynamic analysis and its application to microzonation - Prof. Ikuo Towhata (Tokyo, Japan) (Photo 6).

Special Lecture 2: Liquefaction-induced damage in the reclaimed lands along Tokyo Bay during the 2011 Tohoku-Pacific Ocean Earthquake in Japan - Prof. S. Yasuda, K. Harada (Tokyo Denki University, Japan).

Special Lecture 3: Seismic site amplification formula using average V_s instead of V_{s30} and effect of soil nonlinearity - Prof. T. Kokusho (Tokyo, Japan).

Special Lecture 4: Standard buildings, structures, territories, acquirements of safety under tsunami impact- Dr. M. Klyachko, I. Nudner, V. Maximov, E. Peelenovsky, and V. Filkov (Original Alliance for disaster analysis and reduction ,RADAR, NPO, Saint-Petersburg, Russia).

Special lecture 5: Development of geotechnical approaches and design solutions on making slope processes stable on "Amur" road section in condition of frost degradation in foundation - Prof. S.A. Kudryavtsev, Y.B. Berestyany, E.V. Fedorenko, T.Y. Valyseva, R.G. Michailin, and E.D. Goncharova (Khabarovsk, Russia).

Several social and technical tours were also provided by the organizing committee of 4IGS in Khabarovsk (Far East Russia); see Photos 8 and 9.

The next venue of the 5th International Geotechnical Symposium on Geotechnical Engineering for Disaster Prevention and Reduction was decided to be Incheon, Korea, in May, 2013 under auspices of Korean Geotechnical Society, ATC 3 and University of Incheon. The chairman of organizing committee of 5IGS will be Prof. Eun Chul Shin, University of Incheon, South Korea.

NEWS

**INTERNATIONAL SYMPOSIUM ON GEOTECHNICAL
ENGINEERING FOR DISASTER PREVENTION AND REDUCTION
(continued)**



Photo 8 Reception at Russian Restaurant at Khabarovsk



Photo 9 Group photograph of technical tour to coastal area of Amur River

NEWS

The 4th Japan-Korea Geotechnical Engineering Workshop (Geotechnics for Human Security)

The 4th Japan-Korea Geotechnical Engineering Workshop was held in Kobe, Japan from July 6 to 7, 2011. It was organized jointly by Japanese Geotechnical Society (JGS) and Korean Geotechnical Society (KGS).

Under the success of previous workshops (the 1st Workshop in Seoul, Korea, in 1990, the 2nd Workshop in Tokyo, Japan, in 2008, and the 3rd Workshop in Ansan, Korea), the 4th Japan-Korea Geotechnical Engineering Workshop was held in Kobe, Japan, at the same venue as the JGS National Conference, with the main theme of "Geotechnics for Human Security". A total of 27 papers were submitted from JGS and KGS and the paper presentation was made in four sessions on the first day:

- 9:15 - 10:15 Session A
Earthquake and dynamic issues (4 papers)
- 10:30 - 12:00 Session B
Ground characterization, modification, and bearing capacity (6 papers)
- 13:00 - 15:00 Session C
Soil and rock fills, slopes, and excavations (8 papers)
- 15:15 - 17:30 Session D
Environmental issues (9 papers)



- Miki Disaster Prevention Park

http://www.city.miki.lg.jp/english/tourist_hst_disa.html

A technical site tour was conducted on the second day by visiting the places in the photographs.

The next workshop is planned to be held in some city in Korea, in the year of 2013. Both societies wish to continue strengthening the collaborations and friendship between members of the two societies through workshops.

NEWS

The 4th Japan-Korea Geotechnical Engineering Workshop (continued)



E-defense of Hyogo Earthquake Engineering Research Center
<http://www.bosai.go.jp/hyogo/ehyogo/index.html>



Hokudan Earthquake Memorial Park
<http://www.nojima-danso.co.jp/index.php>



Akashi Kaikyo Bridge <http://www.jb-honshi.co.jp/english/bridgeworld/index.html>



NEWS

TC302 OSAKA2011

International Symposium on Backwards Problem in Geotechnical Engineering

Yoshinori Iwasaki
Geo Research Institute

1. TC302 Osaka Symposium

The TC302 (Forensic Geotechnical Engineering, Chair Dr. V.V.S. RAO) had an International Symposium on Backwards Problem in Osaka from July 14 and 15, 2011 at Kensetsu-Koryu Kan in Nishi-ku, Osaka (about 150 participants from UK, USA, Ukraine, Kazakhstan, India, Korea, Taiwan, Nepal, and Japan). The Symposium was organized by a joint activity of TC302, ISSMGE (Chair V.V.S. RAO, India) and Research Committee on Forensic Geotechnical Engineering, Disaster Prevention Research Institute, Kyoto University (Chair Y. Iwasaki, Secretary M. Mimura, Japan) under the auspices of ISO Committee of JGS as well as Kansai Branch, JGS.



Photo 1 TC302 Chair Dr. V.V.S. Rao

2. Increases of Failures of Geotechnical Works

Recent geotechnical works become deeper in depth and bigger in size and tend to cause negative effects to the society as casualties of over 50 persons at Can Tho Bridge failure in Vietnam (2007/9/26). These are manmade accidents and the attitude of geotechnical engineering at present might have critical shortage in safety of the geotechnical construction. The Osaka Symposium tried to sound the reason of such failures of geo-construction and find solutions to improve the situation.



Photo 2 Group Photo TC302 OSAKA2011 July 14-15, Osaka, Japan

NEWS**TC302 OSAKA2011 (continued)****3. Papers presented in the Symposium**

The Symposium started with the greeting welcome address by Dr. V.V.S. RAO, the Chair of TC302, followed by Dr. Iwasaki with the outline and objectives of the Symposium.

[Keynote Papers]

The first **Keynote Lecture** was given by **Prof. Malcolm Bolton**, University of Cambridge, UK, under the title of “Learning from Reality: Lessons from Centrifuge Models.” He showed the slope failure that took place in Hong Kong in 1976 triggered by rainfall was not caused by seepage from surface but the increase of seepage pressure beneath the fill. Centrifugal test had clarified the mechanism of internal hydrofractures that triggered failure.



Photo 3 Prof. M. Bolton



Photo 4 Prof. K. Ishihara

The second **Keynote Lecture** was given by **Prof. Kenji Ishihara**, Chuo University, Japan, under the title of “Collapse of Braced Excavation in Singapore.” He pointed out the big difference of geotechnical condition between the assumed design and the reality. The field studies after the Nicoll Highway Collapse on 20 April 2004 revealed that failed part of the temporary retaining wall corresponded to an ancient narrow river that deepened thick soft marine clayey layer.



Photo 5 Prof. Y. Shioi on Can Tho Bridge

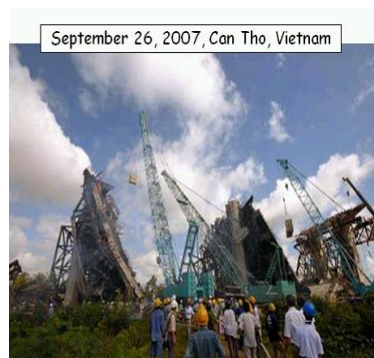


Photo 6 Prof. A. Asaoka

NEWS**TC302 OSAKA2011 (continued)**

The third Keynote Lecture was delivered by **Prof. Yoshitake Shioi**, Prof. Emeritus, Hachinohe Institute of Technology, Japan, who was a committee member of Governmental Investigation for Can Tho Bridge failure on September 26, 2007 in Vietnam. He was the only committee member from Japan. Prof. Shioi showed the special characteristics of the soft clay in the region and proposed to introduce creep characteristics into the design of the bridge foundation. The accident occurred during the process of lifting PC girder from the ground to top of the piers. The vertical member to support the girder had been buckled due to the inclination of the foundation of 12mm/400m with settlement of about 35mm.

In Singapore, the construction was rather heavily instrumented but appropriate observational procedure was not performed. In Vietnam, no attention was paid to monitor the movement of the tilting of the foundation as well as settlement during the lifting of the girder.

The fourth Keynote Lecture was given by **Prof. Akira Asaoka**, Prof. Emeritus, Nagoya Univ., who introduced the delayed consolidation caused by extreme sensitive clay that is often difficult to deal with in conventional consolidation theory.



Photo 7 Dr. K. Ito



Photo 8 Dr. R. Hwang

The last Keynote speaker was **Prof. Toshihiko Omoto**, Kyoto University, Japan, who specialized and qualified himself as an international member of board of dispute on construction. Dr. Omoto introduced the enrollments of dispute board in the international construction to avoid critical dispute of the construction as well as to secure the safety of the construction.

Two current topics of Tsunami as well as nuclear power problem were also introduced. **Dr. Masanobu Shishikura**, Geological Survey of Japan, showed historical evidence of the tsunami deposits caused an ancient huge tsunami just like the one of March 11, 2011 in the northern East region Japan.

NEWS**TC302 OSAKA2011 (continued)**

Photo 9 Prof. Y. Nemchynov



Photo 10 Dr. M. Shishikura

Prof. Yuriy Nemchynov, NIISK, Kyiv, Ukraine, presented the process of covering the nuclear power plant at Chernobyl (Ukraine) to control the radioactive contamination. He also demonstrated structural and geotechnical aspects of this nuclear power plant disaster and recovering progressing of international joint project (USA, France, Ukraine) since 1986 till 2011.

[Investigation Method] **Prof. Askar Zhussupbekov**, Columbia University, USA, presented Remote Methods Research System and Base Foundation above Ground Building, which refers to some mysterious application of “bio-location.” This interesting method came from Russian military service for obtaining submarines with this biolocation.

[Earthquake Geotechnical Engineering] **Prof. Susumu Iai** of Kyoto University discussed “Backwards problem for Earthquake Geotechnical Problem.”

[Anchored Wall] “Failure of Anchored Wall in Korea” was presented by **Prof. Myoung-Mo Kim** and “Simulation of Failure of Anchored Wall by Centrifugal Model Test” was presented by **Dr. Kazuya Itoh**, National Institute of Occupational Safety and Health.



Photo 11 Prof.S.Iai



Photo 12 Prof.M.M. Kim

NEWS**TC302 OSAKA2011 (continued)**

Photo 13 Prof. M. Mimura



Photo 14 Prof. B. Hsung

[Settlement] Prof. Mamoru Mimura, Kyoto University, reported the special characteristics of long term settlement at Kansai Airport, Japan.

[Excavation and Subway Construction] Case study on failure and damage to metro construction includes “Piping failure of a Metro Tunnel Construction” by Prof. Wei Lee of National Taiwan University of Science and Technology, “Damages to metro tunnels due to Adjacent Excavation” by Dr. Richard Hwang, Moh and Associates, Taiwan, “Rethink of Failure of Underground Construction” by Prof. Benson Hsiung of National Kaohsiung University of Applied Science, “A Soil Water Coupled Finite Element Analysis of Open-Cut Excavation for Soft Clay Deposit by elasto-viscoplastic Model” by Prof. Yosuke Higo, Kyoto University, “Forensic Analysis of Failure of Shoring Piles” by Dr. Santosh Rao, Naghadi Consultants, India, and “Backwards Analysis from Retaining Wall Systems by Sheet piles based upon Lateral Wall Displacement in Soft Ground, St. Petersburg ” by Prof. Kenji Okajima, Mie University, Tsu, Japan.



Photo 15 Prof. W. Lee



Photo 16 Prof. K. Okajima



Photo 17 Prof. Y. Higo

NEWS**TC302 OSAKA2011 (continued)**

Photo 18 Prof. A. Mochizuki



Photo 19 Prof. A. Zhussupbekov

[Reinforced Soil] Prof. Satoru Shibuya, Kobe University, presented “Case Study on Causes and Countermeasures of Largely Deformed Reinforced Earth Wall with Geotextile in Hyogo, Japan.” Prof. Eun Chul Shin, University of Incheon, Korea, presented “Case Study of Reinforced Earth Wall Failure during Extreme Rainfall.”



Photo 20 Prof. E.C. Shin



Photo 21 Dr. S. Rao

[Slope Stability] Prof. Akitoshi Mochizuki, Prof. Emeritus, Tokushima University, Japan, showed that the total stress analysis provides an effective method for “A Failure of a Cut Slope and Deterioration of Shear Strength due to Weathering.”

[Geo Code] Prof. Askar Zhussupbekov, Eurasian National University, Astana, Kazakhstan, introduced problems in Kazakhstan by “Forensic Issues of Adaption of Eurocodes of Geotechnical Engineering to Kazakhstan Geotechnical Norms.”

NEWS**TC302 OSAKA2011 (continued)**

Photo 22 Prof. T. Adachi



Photo 23 Dr. Y. Iwasaki



Photo 24 Prof. S. Shibuya

[Safety of Geo-Construction] Dr. Yoshinori IWASAKI, Geo Research Institute, Osaka, Japan, showed a case study how to apply Observational Method (OM) presenting “An Alternative Approach as OM Inferred from Monitored Data to Avoid the Failure of the Geotechnical Excavation in Singapore.” Prof. Toshihisa ADACHI, Geo Research Institute, expressed his experiences as “Enrollments of Technical Committee and Geoinformatics for Geo-construction.”

Failures may be divided into two groups “during construction” and “after construction.” Observational method has been proposed by Terzaghi and Peck for the safety of the geotechnical works and practiced in the past.

Failures during construction have been attributed to mainly two reasons. One is the difference between the assumed failure theory and conditions in the design and the reality (Bolton, Ito, and Ishihara). Another important point is the difficult local soils (Asaoka, Lee, Mimura). The misuse and/or practice without OM during the construction cause failure of construction (R. Hwang, B. Hsiung, and Y. Iwasaki).

Failures after the construction were caused by different causes of changes of characteristics of deformations (Shibuya) and strength (Kim, Mochizuki, and Shin).



Photo 25 Prof. A. Iizuka



Photo 26 Prof. T. Omoto in discussion

4. Panel Discussions

Discussions were focused upon characteristics of local soils that may lead to critical failures and practical case study of OM for geotechnical constructions. Dr. Tara Nidhi Lohani, Geo Research Institute, discussed local sensitive soft clay in Osaka based upon data base of geotechnical borings in Kansai Area. Prof.

NEWS

TC302 OSAKA2011 (continued)

Atsushi Iizuka, Kobe Univ., Japan, reported an application of OM for highway embankment on very sensitive soft clayey ground. **Dr. Takahiro Konda**, Geo Research Institute, showed OM approach for subway shield machine in urban area in Osaka.

One of the key approaches for OM consists of some interactive design process that is continuously fed back between the predicted design and monitored reality.

Prof. Omoto, Kyoto Univ., suggested the best way to extract insurance money, if happened. Usually, owner and contractor applied for insurance separately in the past. However, the best way is that the both owner and contractor apply to united insurance.

Prof. Iizuka commented the specialty of geotechnical engineering work among other constructions within the frame work of WTO (world trade organization). WTO defines the structures neither by its shape nor its dimensions but its performance. It is commonly difficult to define “performance” before confirming the geotechnical characteristics in the field. **Prof. Iizuka** insisted that the design should be verified during the construction phase to obtain the best estimate of the expected performance in the future, which might be made easier by rather united contract of “design and built” than independent contract respectively.

Failure of Nicoll Highway

During the Symposium, special attention was focused upon the possible causes to trigger the disaster. **Dr. Y. Iwasaki** suggested that if the deflection of the retaining wall had been compared to appropriate failure strain of jet grouted slab under horizontal compression as well as asymmetry of the deflection, some countermeasures could have been provided to avoid the final failure.

Dr. R. Hwang pointed out the possibility of effect of the incompleteness of jet grouted slab due to the electric cable line that existed across the area to be excavated.

Dr. Hwang pointed the misuse of assumption of the bottom of installed inclination pipe as fixed point to compute the horizontal deflection along the pipe. The guide pipe for inclinometer is usually inserted into “hard layer” and assumed as “the bottom as the fixed point.” This assumption has been commonly adapted in the geotechnical practice and was wrong in most cases (Hwang, Hsiung, and Higo). To avoid the wrong assumption, the displacement of the top of the guide pipe should be monitored.



Reception for TC302 Osaka 2011 Symposium - July 14, 2011
Backwards Problems in Geotechnical Engineering
ISSMGE TC302: Forensic Geotechnical Engineering

Photo 27 Group photo at the Reception of TC302 Osaka 2011

NEWS**TC302 OSAKA2011 (continued)****Reception**

A reception party was held in the evening of the first day of the Symposium. During the reception, Prof. Askar Zhussupbekov, the Vice President of ISSMGE for Asia, expressed his deep thanks to Dr. V.V.S. RAO, Dr. Y. IWASAKI, and Prof. M. MIMURA for their contributions to activate the interactive exchange of geotechnical engineering in Asian region.



Photo 28 Prof. Askar, Vice President of ISSMGE in Asia, expressed his gratitude to organizing TC302 Osaka.

Technical Trip

On July 17, a technical site visit was arranged to Kansai Airport, where expected settlements are more than 10m. The extensometers and countermeasures to adjust differential settlement of large structures including passengers building were very special and interesting. Technical details were explained by Mr. Yukio Nakatani, Leader, Dep. of Civil Engineering, Construction Office, Kansai Airport Company.



Next Conference (Symposium) of TC 302 will take place in Bangalore (India) in 2013.

NEWS

TC302 OSAKA2011 (continued)

Resolution

Discussions revealed that main reason of failure in geotechnical construction is the difference between assumed conditions during design stage and the real site conditions including the local special soil. The effective countermeasure to this problem is given through only "Observational Method (OM)." At present, most big projects are funded to install sensors to monitor construction performance. Conducting monitoring does not necessarily mean an OM and sometimes resulted in critical failure like as in Singapore and Vietnam. We have to create guidelines of OM in geotechnical engineering to provide the background, preparatory procedures, initial design including study of possible modes of deformation and failure, arrangement of countermeasures, selection of monitoring items and sensors, and interactive design as feeding back process based upon monitored results. The guideline is intended to be a draft of an international standard of "Observational Method in Geotechnical Works" that may be discussed in the technical session of ISO/TC182.

The Osaka International Geotechnical Symposium adapted the following resolutions.

July 15, 2011

Resolution of TC302 Osaka Symposium

TC302 conducted an International Symposium in Osaka on July 14-15, 2011 and discussed the emerging topic of forensic geotechnical engineering. The main causes which trigger failure in geotechnical constructions were recognized as differences between design assumptions and reality.

Peculiar soils like very soft sensitive clays which can exhibit prolonged settlements due to changes of load, and silty sands which can exhibit piping failure under hydraulic gradients, were discussed as important factors in embankment and excavation works respectively.

Unusual slope failure mechanisms were identified from centrifuge model tests, and the forensic examination of a variety of earth retention failures in the field indicated that ground distortion mechanisms could not always be predicted.

The Observational Method was identified as a key tool for reducing construction costs whilst maintaining safety and serviceability in geotechnical design. The installation of measuring devices for construction monitoring has become common but the monitored data are not always interpreted, and this has sometimes led to failures. This can arise when the designer does not clearly specify the expected ground deformation mechanism, or does not set appropriate alarm levels. Other possible reasons are the inadequate installation of instruments, or the lack of a capable geotechnical engineer on site during the critical stages of construction.

Since its incorrect application can result in the necessary application of Forensic Engineering, TC302 proposes to work with other interested parties to clarify and refine best practice in the use of the Observational Method in geotechnical engineering. We therefore seek to include this activity in the terms of reference of TC302, and we will invite TC 206 (Interactive Geotechnical Design) and TC304 (Engineering Practice of Risk Assessment and Management) to do likewise, so that a joint report can be produced. It is proposed that a symposium be jointly organised to disseminate findings, and to seek contributions from ISSMGE members that demonstrate the state of the art

REPORT FROM MEMBER SOCIETIES

Thai Geotechnical Society and A review of some important geotechnical works in Thailand

Background of the society

Thai Geotechnical Society, TGS, was originally formed as one of the technical committees of the Engineering Institute of Thailand, EIT, under HM The King patronage in 1993. From then on, it has played an active role in promoting technical advances and research activities in the field of geotechnical engineering in Thailand. With increasing demand in its activities, the committee decided to establish TGS in 2008 and joined the International Society for Soil Mechanics and Foundation Engineering in the same year. Currently the numbers of Thai geotechnical engineers are estimated to be around 2,000 and are working in the country and abroad.

Geotechnical engineering in Thailand

Geotechnical engineering has first been recognized as an important field in its own right in Thailand in 1960's, following the guidance of Professor Chai Mukthabhan of Chulalongkorn University, who is regarded as the Father of Soil Mechanics in Thailand (Fig. 1). Establishment of the Asian Institute of Technology (AIT) in Thailand in 1959 has also been a major impact to geotechnical engineering in Thailand. AIT has been at the forefront in introducing the subject to the country, thanks to pioneering works of such academics as Professor E.W. Brand, Professor Z.C. Moh, Professor J.D. Nelson, Professor A.S. Balasubramaniam, Professor D.T. Bergado, Professor Prinya Nutalaya, and many others. Moreover, AIT has produced many good quality researches, and has been the focal point of geotechnical education in the region. Nowadays, there are more than 30 universities in Thailand that offer graduate programs in geotechnical engineering. As part of infrastructure development in the country, geotechnical engineers have played an important role and many core members of the TGS have been actively involved in the development. Some of the major projects are described in what follows.



Fig. 1 Professor Chai Mukthabhan, Father of Soil Mechanics in Thailand

Soft Bangkok Clay and some related geotechnical problems

The city of Bangkok and surrounding area are situated over a thick deposit of soft clay. The subsoil consists of the layer of top crust underlain by the soft to very soft clay, which has the thickness of about 8 to 15 meters. The water content of the soft clay is ranged from 45 to 120 %. The liquid limit ranges from 40 to 120%. The shear strength of soft Bangkok clay is quite low, ranging from 6 to 25 kN/m². The soft to very soft clay layer is underlain by the medium and then stiff clay layers. Considering the difficult ground conditions, geotechnical engineering plays important roles in the construction in Bangkok and vicinity area. Many researches have been investigated in order to accurately predict the behavior of soft Bangkok clay.

REPORT FROM MEMBER SOCIETIES

Thai Geotechnical Society (continued)

Regarding earth retention system, conventional sheet pile with bracing system is normally used for the temporary excavation, which means the excessive lateral displacement cannot be avoided in some area. Diaphragm walls are normally used as a permanent structure for deep excavation. Barrette piles are cooperated in the diaphragm wall to increase the stability of the system and have proved to be successful. However, some failure happened and the lesson has been learnt. The collapse during construction of an inlet pumping station in 1997 brought concern to geotechnical engineers in Thailand about the design of deep excavation without adequate attention to the instrumentations and monitoring system. Due to the high demand in underground space utilization in Bangkok, there have been a relatively larger number of deep excavation projects, in the recent decades (Fig. 2).



Fig. 2 A boom in utilization of underground space in Bangkok

The post-construction excessive settlement is also the main problem of the earth structure in Bangkok area. Many highway embankments faced this problem directly which prompted numerous detailed studies to be performed to monitor and study the settlement behavior of the highway. One of the most detailed studies about consolidation behaviour of soft Bangkok clay was conducted for the Suvarnabhumi International Airport (Fig. 3). Various methods for improvement of the soft clay have been used, such as conventional PVD preloading, soil cement columns, pile foundation, vacuum consolidation, etc. Most of the ground improvement works were successfully executed with relatively few technical obstacles. Today, prefabricated vertical drain is commonly used in highway construction. The technique has been proven to be successful in many highways. Another technique for reducing the excessive settlement is to transfer the embankment load to the firm stratum based on the pile foundation concept. In the past concrete pile has been used in highway construction but were not satisfactory due to the high construction cost. Therefore, soil-cement column technique has been studied and used in the recent highway construction because of more acceptable cost than concrete pile and shorter construction period than the vertical drain technique.

REPORT FROM MEMBER SOCIETIES

Thai Geotechnical Society (continued)

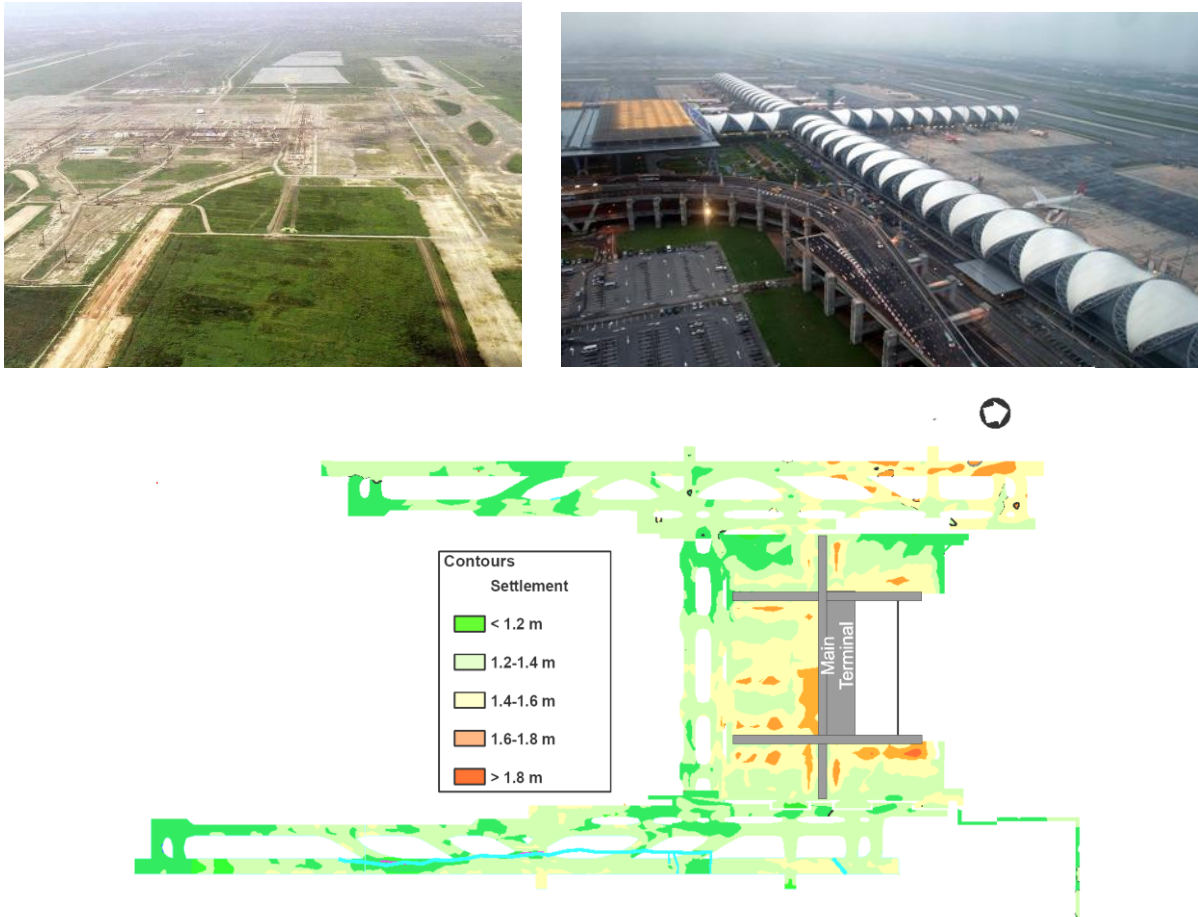


Fig 3 Suvarnabhumi International Airport and the contour of ground settlement at the end of preloading period

There are however some problems related to the use of soil-cement column as retaining structure in excavation of soft Bangkok clay and failures have been experienced in some projects (as shown in Fig. 4). These are related to two main reasons, namely 1) the variability of shear strength of the improved soils, and 2) the improved soil which is still very low in tensile strength due to presence of inherent defects. The success of the technique thus highly depends on quality control during making of cement columns. Many core members of the Thai Geotechnical Society have been active and instrumental in understanding and solving the problem (Fig. 4).

REPORT FROM MEMBER SOCIETIES

Thai Geotechnical Society (continued)



Fig. 4 Use of soil cement column in excavation of canal in the soft Bangkok clay, upper photo shows some related instability problem which had been solved and the lower photo shows the canal after completion

Tunneling

Tunneling activities in the soft Bangkok clay have been ongoing since 1990's. There have been numerous 3.2-m-diameter flood drain tunnels in Bangkok. In fact, the city was once the busiest place in the world in terms of the amount of pipe jacking tunneling activities. This situation has also proved very challenging in terms of tunneling-underground structure interaction (Fig. 5).

REPORT FROM MEMBER SOCIETIES

Thai Geotechnical Society (continued)

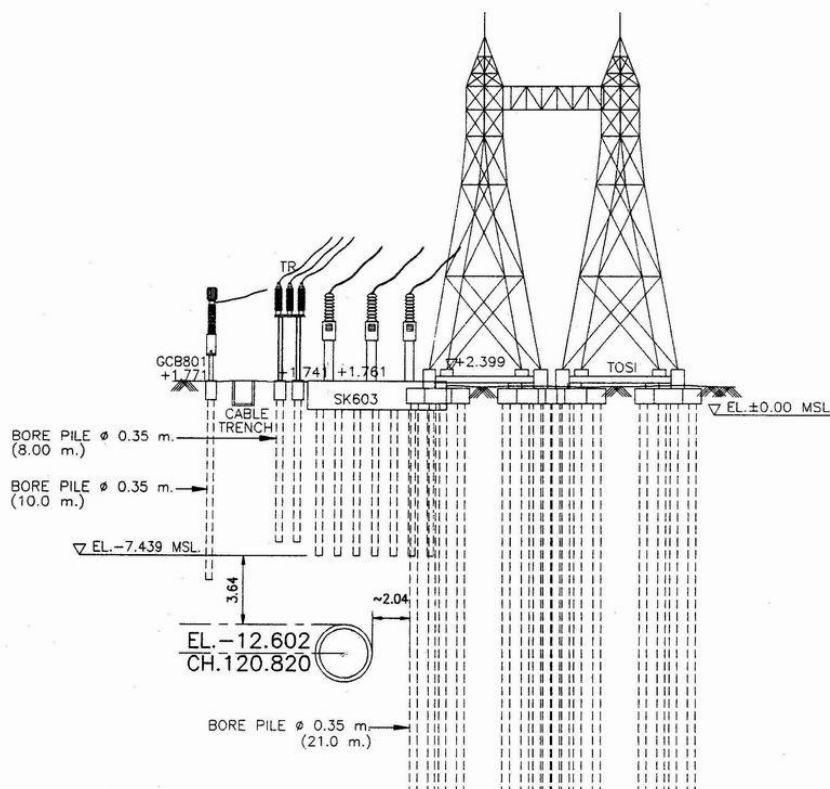


Fig. 5 Some tunneling activities and challenging situation in Bangkok

There is currently one underground railway line in Bangkok, the so-called MRTA blue line. One portion of this line is located underneath a street in the China town of Bangkok, where an underground station is also located (Fig. 6). Since this street is one of the busiest streets in Bangkok, closure of any traffic during station construction was not possible. As a result, the innovative mining method was proposed to construct the station. More underground lines are under the designing phase and are expected to operate in the coming decade (Fig. 7).

REPORT FROM MEMBER SOCIETIES
Thai Geotechnical Society (continued)

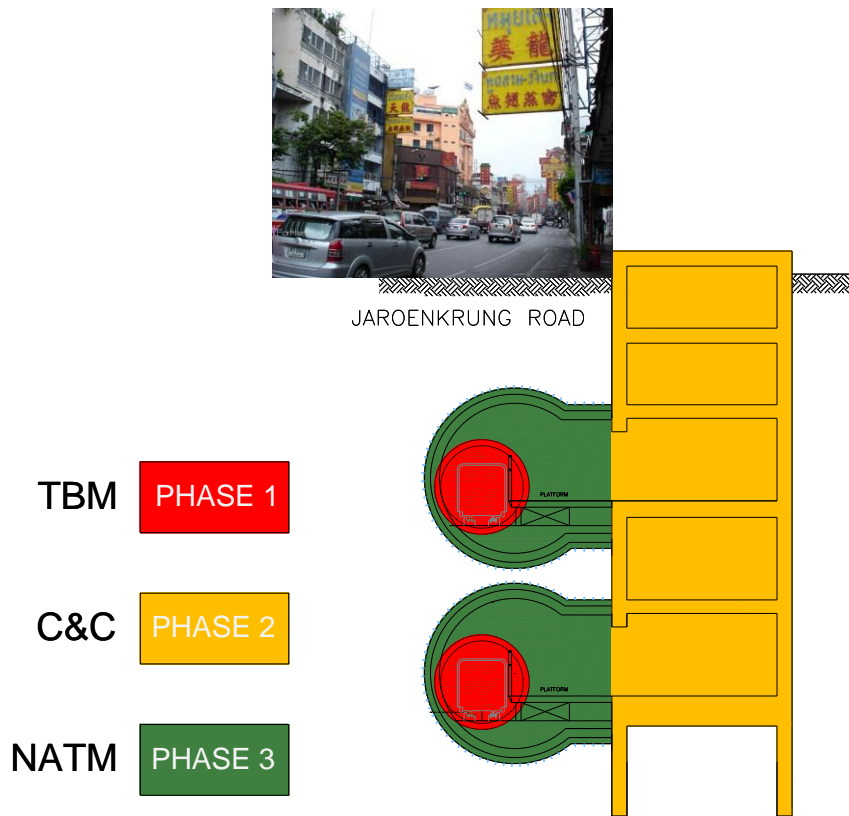


Fig. 6 Construction of a subway station in the China town of Bangkok



Fig. 7 Some tunneling activities for the MRTA system in Bangkok

REPORT FROM MEMBER SOCIETIES

Thai Geotechnical Society (continued)

Other tunneling projects in difficult grounds such as slaking rocks, such as siltstone & mudstones, in Thailand have been carried out successfully for the pumped storage power house project in Lamtakong as shown in Fig. 8.

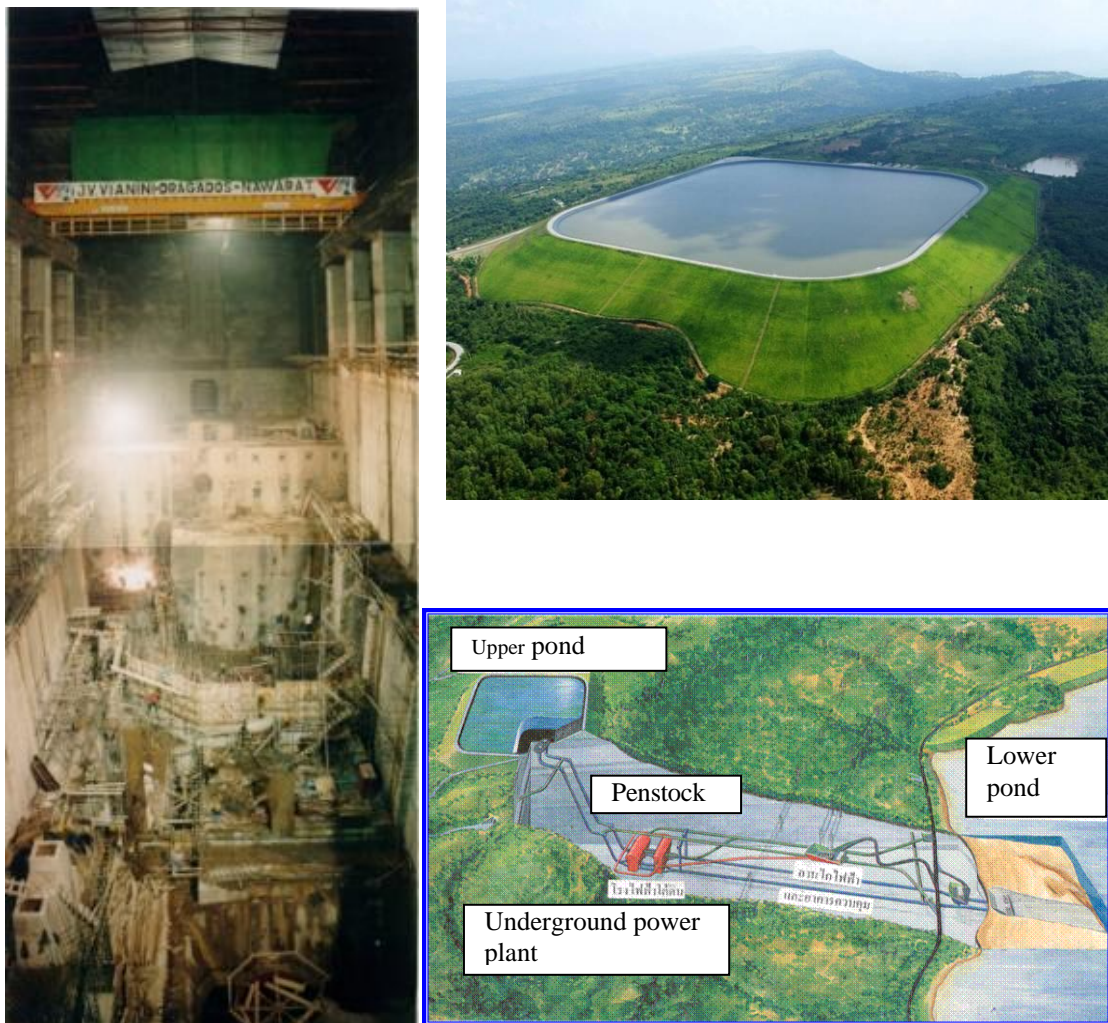


Fig. 8 Lam-ta-khong pumped storage project

Dams and the challenge

A number of large dams have been constructed in Thailand since 1960's. Thai engineers have become more confident in design, construction, evaluation and monitoring of such dams both in the country and neighboring countries such as Laos and India. For example, Thadan Dam in Nakornnayok Province, (Figs. 9 to 11) was once the largest roller-compacted concrete (RCC) dams in the world, constructed for irrigation purpose and more recently for electricity generation as well. In addition, many young Thai geotechnical engineers, researchers, and students had their opportunities to conduct various research based on real problems encountered during the construction, operation and maintenance of the dams.

REPORT FROM MEMBER SOCIETIES
Thai Geotechnical Society (continued)

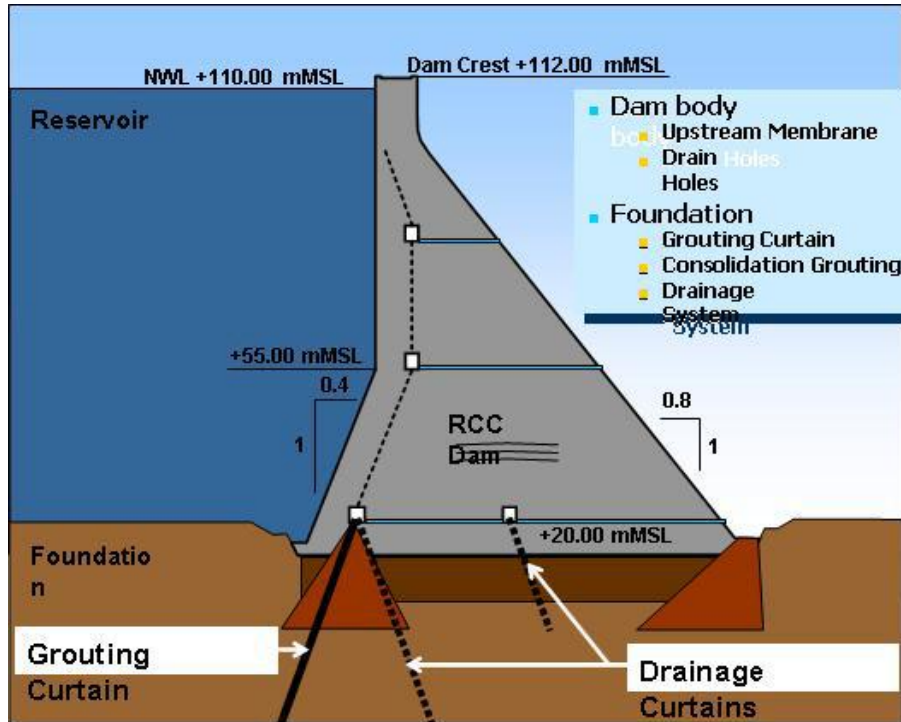


Fig. 9 Thadan dam - cross section for design



Fig. 10 Thadan dam - during construction

REPORT FROM MEMBER SOCIETIES

Thai Geotechnical Society (continued)



Fig. 11 Thadan dam - after completion

Landslides and other disasters

There has been a high demand of development near or on hillslopes, particularly in popular tourist resort towns such as Phuket, Samui, and Koh Chang. Thai geotechnical engineers and academics have been active in developing a safer design and construction method of foundation as well as slope stabilization method. The popular stabilization techniques include use of geosynthetics in reinforced soil slopes, soil nailing, horizontal drainage, as well as bio-stabilization such as vetiver grass utilization as well as natural geotextile (soil blanket) or limited-life geotextile (Fig. 12).

REPORT FROM MEMBER SOCIETIES

Thai Geotechnical Society (continued)

In addition for natural landslide such as debris flow, the geotechnical engineers are also developing the early warning as well as hazard mapping, based on geotechnical engineering method, GIS and remote sensing technique (Fig. 13).



To test the effectiveness of the soil blankets and cushions



Fig. 12 Challenging situations for slope engineering in Thailand, Construction of reinforced soil slope, vetiver grass utilization and soil blanket in slope protection

REPORT FROM MEMBER SOCIETIES

Thai Geotechnical Society (continued)

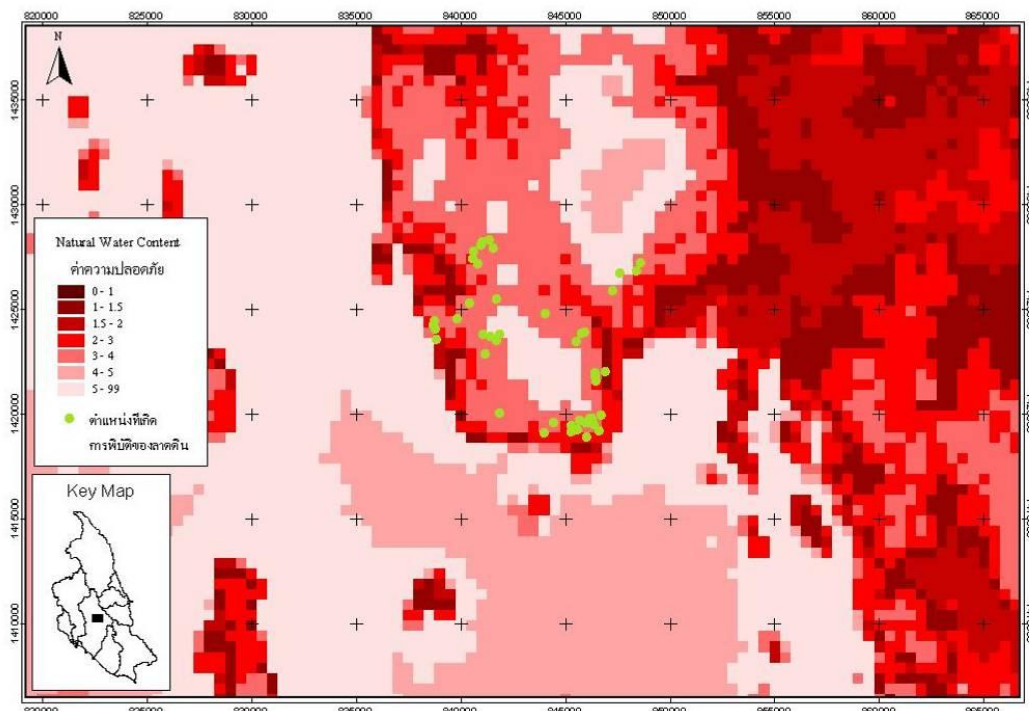


Fig. 13 Development of hazard mapping and early warning for large area landslide (contour showing Factor of Safety and its calibration with real landslide areas)

Education and international activities

TGS also encouraged a number of education and international activities such as conferences and short courses. Indeed, Research & Development has been growingly recognized as the important part of education and industry in Thailand in the recent decades. The first physical-modeling centrifuge apparatus has been manufactured in Thailand since 2005 and has been used both for research and practical work at King Mongkut's University of Technology, Thonburi (Fig. 14). Unsaturated soil mechanics has been taught in several universities in Thailand and has been gaining more practical use in analysis of soil-atmosphere interaction and landslide analysis. Several international conferences that TGS has supported include the followings.

REPORT FROM MEMBER SOCIETIES

Thai Geotechnical Society (continued)



Fig. 14 The first physical-modeling centrifuge apparatus manufactured in Thailand

In 2010, the Department of Highways of Thailand, with the support of TGS, organized the International Conference on Slope in Chaingmai which was very well received by many engineers from around the world.

In 2011, Geotechnical Engineering Research and Development Centre, Department of Civil Engineering at Kasetsart University, will organize the 5th Asia-Pacific Conference on Unsaturated Soils, which is supported by the Technical Committee 106 (unsaturated soils) of the ISSMGE and TGS (Fig. 15), with strong emphasis on various aspects of geotechnical practice including slopes and climate change problems. The conference will be held in Pattaya during 13-15 November 2011.

In 2012, the Thai Underground and Tunnelling Group, TUTG, of EIT will host the World Tunnel Congress, one of the most important events in the world of Tunneling, in Bangkok (Fig. 16).

Thai Geotechnical Society will continue to be proactive in collaborating with geotechnical engineers from around the world, thus contributing to the advancement of the profession both in the country and the region.

Location:

The conference will be held in Pattaya, one of Asia's largest beach resorts and the most visited city in Thailand after Bangkok. Once a fishing town, Pattaya first boomed as an 1868 destination during the Vietnam War and developed into a family-orientated seaside destination.

Many attractions are within the vicinity of the conference venue, including golf courses, theme parks, Elephant Village, Tiffany's show, etc. Pattaya is only about 1h hours, or 120 km by road from Suvarnabhumi Airport, the Bangkok international hub. Shuttle buses will be provided for delegates.

*Some details from Wikipedia and www.pattaya.go.th

Important dates

First Conference Bulletin :	Jan, 2010
Abstract due :	Oct 31, 2010
Abstract acceptance :	Nov 30, 2010
Draft paper due :	Jan 31, 2011
Paper review & acceptance :	April 30, 2011
Final paper due :	May 31, 2011

Conference website

<http://unsat.eng.ku.ac.th>
E-mail : unsat@ku.ac.th

Contact details

Organizing Committee of 5th Asia-Pacific Conference on Unsaturated Soils
Geotechnical Engineering Research and Development Center (GERD)
Department of Civil Engineering, Faculty of Engineering Kasetsart University,
Phahonvithayalai, Ladkrabang, Chuchua, Bangkok, Thailand 10900
Tel./Fax: 66-2379-2055

Organized by

Geotechnical Engineering Research and Development Center (GERD), Department of Civil Engineering, Kasetsart University,
Thai Geotechnical Society
and
Engineering Institute of Thailand

Fig. 15 AP-UNSAT 2011 conferences supported by TGS and EIT

REPORT FROM MEMBER SOCIETIES Thai Geotechnical Society (continued)

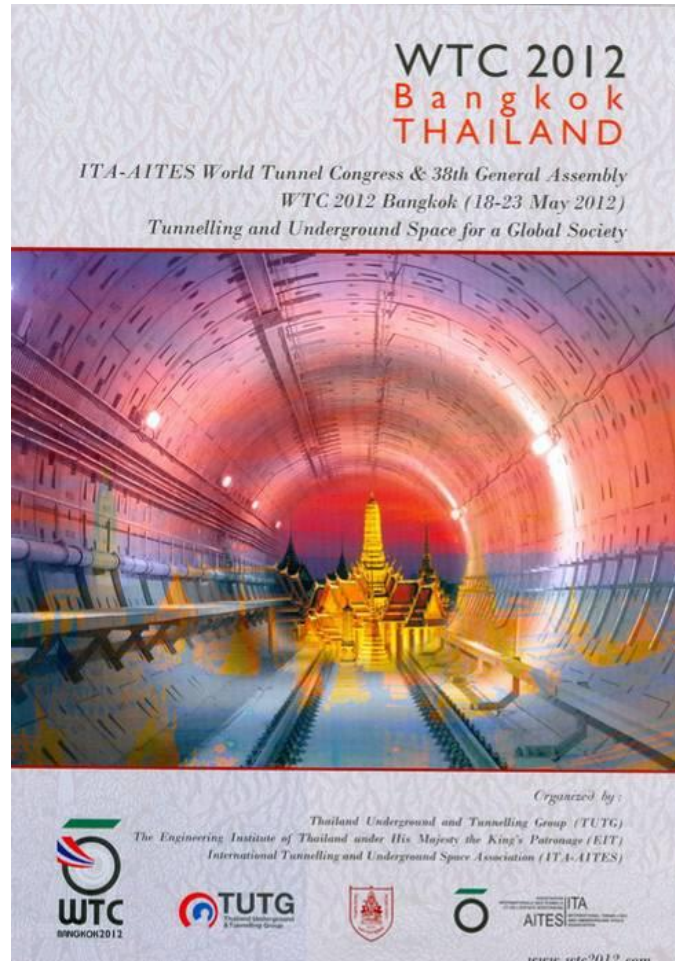


Fig. 16 WTC 2012 supported by TGS and EIT

REPORT FROM MEMBER SOCIETIES

CHINESE TAIPEI GEOTECHNICAL SOCIETY

Established in 1997, Chinese Taipei Geotechnical Society (CTGS) is a non-profit organization and has been dedicated to geotechnical researches as well as the advancement in geotechnical technology. It is currently one of the most active societies in the field of geotechnical engineering in Asia with both over 300 individual members and 24 group members that are actively participating from government, industry-related agencies, and academia.

Our missions include:

1. researches, development, and promotion of geotechnical-related science and technology,
2. collecting a rich database of geotechnical books, journals, and information,
3. taking projects from field-related agencies and offering consulting services,
4. providing the geotechnical regulatory reference and educational opinion to government,
5. maintaining the worldwide network of geotechnical society and exchanging information,
6. society publications of newsletters, journals and other related books, and
7. elevating the status of civil engineers.

We have set up 7 committees to promote our organization affairs:

- ♦ Organization Affair and Member Committee: to develop short and long term plans for the organization, member recruiting, membership assessment, and intercommunications.
- ♦ Academic Event Committee: to organize academic events and collect related information.
- ♦ Research and Development Committee: to promote the academic researches and technology development, set up regulations for geotechnical engineering, and offer consulting service.
- ♦ Education Promotion Committee: to introduce courses about geotechnical engineering, teaching materials, and new information to educational agencies.
- ♦ Technology Committee: to exchange knowledge and technology with international groups, keep records for the experiences, and demonstrate the achievements.
- ♦ Award Committee: to set up the standards for evaluation and new awards.
- ♦ Working Group on Specifications: to collect geotechnical engineering regulation-related information and participate in industrial conferences.



CTGS 8th President: Prof. San-Shyan, Lin, National Taiwan Ocean University

REPORT FROM MEMBER SOCIETIES

CHINESE TAIPEI GEOTECHNICAL SOCIETY (continued)

In order to boost exchanges of Geotechnical knowledge, CTGS issues quarterly publications and research reports in addition to hosting national and international conferences, site visits, and lectures regularly (<http://www.tgs.org.tw>).

From 25th to 26th, August 2011, the 14th Taiwan Geotechnical Engineering Conference & Seminar was just held at Aspire Resort, Longtan Township, Taoyuan, Taiwan. Including 8 subjects, the main theme of the conference is "Disaster Prevention & Sustainable Development". There are 240 submitted papers, presented either in oral or in postal. There were over 300 attendees from government, industry-related agencies, and academia.



Eight awardees and President Lin in the Closing Ceremony on 26th August at Aspire Resort Longtan, Taoyuan, Taiwan.
14th Taiwan Geotechnical Engineering Conference and Seminar

Except the hosting of Bi-annual National Taiwan Geotechnical Engineering Conference and Seminar, we also serve our members:

- 1) delivery of related field messages of lectures, seminars & conferences through Internet, E-mail and Newsletters,
- 2) to hold (or to co-operate) the "hot topic" seminar and try to release these research/results as books, and
- 3) to coordinate the related field societies and institutions to have some professional learning tour for both teaching & interaction functions.

REPORT FROM MEMBER SOCIETIES CHINESE TAIPEI GEOTECHNICAL SOCIETY (continued)



Jun.21, 2011 hosting a lecture, hosted by President Lin

Sub1: Tip Grouted Drilled Shafts with Full Depth Temporary Casings for Two Mississippi River Bridges. By Dr. Steven Dapp from Dan Brown and Associates

Sub2: Some Case Examples on Tip Grouting of Drilled Shafts in Taiwan, By Dr. H.H. Hsieh

Message from Corporate Associates

150 Years of HUESKER Our Trademark – the Finest Minds

Mr Manfred Balzer, qualified engineer and Managing Director of HUESKER Synthetic GmbH in Gescher, Westphalia, proudly announces: “There are not many companies lucky enough to be able to celebrate their 150th anniversary”. Thanks to the innovative orientation and potential of HUESKER’s excellent staff, the company has become an international market leader since it was established 150 years ago. The slogan clearly reveals its position: “HUESKER - Engineering with Geosynthetics”. The continual search for the optimal solution for HUESKER’s customers has resulted in numerous patents. HUESKER’s engineers are always on the scene. Today, HUESKER is considered one of the hidden champions of German medium-sized companies.



Mr Balzer sums up the company philosophy: “Our employees are our greatest asset and they continue to make all the difference. Competence, reliability and a committed search for the optimal solution - these factors form the basis of HUESKER’s success”. Highly qualified, motivated and experienced staff guarantee consistent outstanding product quality and functional solutions. “All our activities are focused on our customers and their requirements to which we dedicate our efforts with a high degree of flexibility and competence. Our entire expertise and experience therefore serves our customers around the globe” emphasizes Mr Balzer.

Company Development

The company HUESKER was founded as H. & J. Huesker & Co. in December 1861 in Gescher, Westphalia, as a cotton weaving mill. The following years were marked by a period of rapid industrial expansion in Germany. In 1958 the company recognised the excellent development opportunities for synthetic textiles. This began with the manufacture of filter fabric sheets and sandbags. The continual expansion of the product range resulted in the foundation of HUESKER Synthetic as an independent medium-sized company in 1973. Now it is a global player with an international sales network and numerous subsidiaries. Today, HUESKER geosynthetics are used in the construction industry. Industrial and agricultural textiles are further, rapidly expanding product ranges of the company.

Products

As individual as the requirements are, HUESKER’s range of products and their different applications are just as varied. The standard product range includes synthetic textiles, geogrids, composite materials and clay sealing strips. The portfolio is rounded off with nonwovens, drainage mats and erosion protective mats (see table opposite). In addition to this standard range, HUESKER develops individual solutions for various structural engineering applications using a high degree of technical expertise and the company works together closely with customers, engineering companies, research and testing institutes. In this context geosynthetics bear a functional responsibility and therefore require long development and test phases which involve extensive approval and certification procedures. Certification of HUESKER’s products is consistently verified. External and internal quality controlling and monitoring in HUESKER’s own accredited laboratory guarantee a consistently high product quality.

Thus HUESKER offers the most diverse structural engineering solutions all over the world. For example, implementation of projects ranging from earthworks and foundation engineering, road, railway and airport construction projects to hydraulic engineering, landfill construction, redevelopment of industrial and contaminated soils as well as asphalt reinforcement.

Message from Corporate Associates

Tensar International Limited



Tensar is a worldwide leader in the manufacture and provision of soil reinforcement and ground stabilisation products and systems. Our expertise and experience has been accumulated over several decades of successful collaboration in projects internationally. Our service team, comprising many qualified civil engineers, provides practical and best value advice and design to support the use of Tensar products and systems in your application.



Tensar mechanical stabilisation of a temporary causeway over tidal mud flats, Australia



TensarTech TW1 Earth Retaining System uses site-won fill for walls up to 8m high and 200m long, UK



Tensar geogrid provides cost savings of 20% and increases bearing capacity of the ground by 40%, China



SierraScape® System utilises non-corrodible geogrid reinforcement that allows a wide variety of backfills, USA

Contact person: Mrs Chaido Doukala-Rigby (Yuli), MICE CEng
Chief Civil Engineer

Address:

Tensar International Limited, Cunningham Court
Shadsworth Business Park, Blackburn BB1 2QX, UK
Tel: +44 (0)1254 266809 Fax: +44 (0)1254 266873
crigby@tensar.co.uk www.tensar-international.com

Event Diary

ISSMGE SPONSORED EVENTS

Please refer to the specific conference website for full details and latest information.

2011

21st European Young Geotechnical Engineers' Conference

Date: 4 - 7 September 2011

Location: Rotterdam, Netherlands, The

Language: English

Organizer: Netherlands Society for SMGE

- Contact person: Angelique van Tongeren
- Address: PO Box 30424,
2500GK The Hague
Netherlands

• E-mail: EYGEC2011@kiviniria.net

Website: www.kiviniria.net/EYGEC2011

XV European Conference on Soil Mechanics and Geotechnical Engineering "Geotechnics of Hard Soils - Weak Rocks"

Date: 12 - 15 September 2011

Location: Megaron Athens Int Conf Cntr, Athens, Greece

Language: English/French

Organizer: HSSMGE

- Contact person: Secretariat XV ECSMGE - Athens 2011

- Address: PO Box 26013
10022 Athens
Greece

• Phone: 30 210 6915926

• Fax: +30 210 6928137

• E-mail: athens2011ecsmge@hssmge.gr

Website: www.athens2011ecsmge.org

The Second Italian Workshop on Landslides - Large slow active slope movements and risk management

Date: 28 - 30 September 2011

Location: Cloister of SS. Marcellino & Festo, Naples, Italy

Language: English

Organizer: CIRIAM and DIGA

- Contact person: B. Avolio; G. Carrieri, A. Parente (Technical Secretary); A.M. Rinaldi (Administrative aspects)

- Address: Via Roma, 29
81031 Aversa (CE)
Italy

• Phone: 39 081 5010341-5010262 (Tech.); 081 5010381 (Adm.)

• Fax: 39 081 5010382

• E-mail: info@iwl.unina2.it (Tech.);

ciriam@unina2.it (Adm.);

alfonsomaria.rinaldi@unina2.it (Adm.)

Website: iwl.unina2.it/

XIV Pan-Am / CGS Geotechnical Conference

Date: 2 - 6 October 2011

Location: Sheraton Centre Toronto Hotel, Toronto, Ontario, Canada

Language: English, French, Spanish

Organizer: Cdn Geotechnical Soc. & ISSMGE

- Contact person: Wayne Gibson, P.Eng.

- Address: 8828 Pigott Rd
V7A 2C4 Richmond
BC
Canada

• Phone: 00 1 604 241 1297

• Fax: 00 1 604 241 1399

• E-mail: info@panam-cgc2011.ca

Website: panam-cgc2011.ca

TC207 workshop on Soil-structure Interaction and Retaining Walls

Date: 5 - 8 October 2011

Location: Valamar President Hotel, Dubrovnik, Croatia (Hrvatska)

Language: English

Organizer: TC207, Croatian Geotech Societ

- Contact person: Dr. Igor Sokolic;

- Address: Dept. Civil Engineering,
University of Zagreb,
Kaciceva 26,
HR-10000 Zagreb
CROATIA

• Phone: 385 1 4639 618

• E-mail: isokolic@grad.hr

Website: www.georec.spb.ru/tc207/2011-Croatia/

Event Diary (continued)

2012

Second International Conference on Performance-Based Design in Earthquake Geotechnical Engineering

Date: 28 - 30 May 2012

Location: Conference Center , Taormina, Italy

Language: English

Organizer: ISSMGE TC-203

- Contact person: Dr. Claudio Soccodato
- Address: Associazione Geotecnica Italiana (AGI), viale dell'Università, 11
00185 Roma
Italy

• Phone: 39 064465569

• Fax: 39 0644361035

• E-mail: agiroma@iol.it

Website: www.associazionegeotecnica.it/novita

TC 211 International Symposium & Short Courses "Recent Research, Advances & Execution Aspects of GROUND IMPROVEMENT WORKS"

Date: 30 May - 1 June 2012

Location: IS: Crowne Plaza Brussels , Brussels, Belgium

Language: English

Organizer: TC 211 Ground Improvement

- Contact person: BBRI - Carine Godard
- Address: Avenue P. Holoffe 21
B-1342 Limelette
Belgium

• Phone: 32 2 655 77 11

• Fax: 32 2 653 07 29

• E-mail: carine.godard@bbri.be

Website: www.bbri.be/go/IS-GI-2012

12th Baltic Sea Geotechnical Conference

Date: 31 May - 2 June 2012

Location: Stadhalle (Town Hall) Rostock , Rostock, Germany

Language: English

Organizer: German Geotechnical Society

- Contact person: German Geotechnical Society
- Address: Gutenbergstr. 43
45128 Essen
Germany

• Phone: 49 201 78 27 23

• Fax: 49 201 78 27 43

• E-mail: service@dggt.de

Website: www.12bsgc.de

Shaking the Foundations of Geo-engineering Education (SFGE) 2012

Date: 4 - 6 July 2012

Location: NUI Galway , Galway, Ireland

Language: English

Organizer: ISSMGE

- Contact person: Dr. Bryan McCabe
- Address: Civil Engineering, National University of Ireland, Galway (NUI Galway)
Galway
Ireland

• Phone: 353 91 492021

• Fax: 353 91 494507

• E-mail: bryan.mccabe@nuigalway.ie

Website: www.sfge2012.com

11th ANZ 2012 Geomechanics Conference

Date: 15 - 18 July 2012

Location: Crown Promenade Hotel, Melbourne, Victoria, Australia

Language: English

Organizer: Leishman Associates

- Contact person: Leishman Associates
- Address: 113 Harrington Street
7000 Hobart
Tasmania
Australia

• Phone: 61 36234 7844

• Fax: 61 6234 5958

• E-mail: nicole@leishman-associates.com.au

Website: www.anz2012.com.au

ICSE-6 - 6th International Conference on Scour and Erosion

Date: 27 - 31 August 2012

Location: Ecole Spéciale des Travaux Pub , Paris, France

Language:

Organizer:

- E-mail: contact@icse-6.com

Website: www.icse-6.com

Event Diary (continued)

2nd International Conference on Transportation Geotechnics

Date: 10 - 12 September 2012

Location: Hokkaido University, Sapporo, Hokkaido, Japan

Language: English

Organizer: ISSMGE (TC202) and JGS

- Contact person: Dr. Tatsuya Ishikawa
- Address: Faculty of Engineering, Hokkaido University Kita 13, Nishi 8, Kita-ku 060-8628 Sapporo Hokkaido Japan

• Phone: 81-706-6202

• Fax: 81-706-6202

• E-mail: tc3conference@eng.hokudai.ac.jp

Website: congress.coop.hokudai.ac.jp/tc3conference/index.html

7th International Conference in Offshore Site Investigation and Geotechnics: Integrated Geotechnologies, Present and Future (12-14 September)

Date: 12 - 14 September 2012

Location: Royal Geographical Society, London, United Kingdom

Language: English

Organizer: TC209, SUT - OSIG

- Contact person: Peter Allan
- Address: Geomarine Ltd, A2 Grainger Prestwick Park NE20 9SJ NEWCASTLE UPON TYNE England

• Phone: 44 (0) 191 4537900

• E-mail: peter.allan@geomarine.co.uk; zenon@tamu.edu

The Seventh Asian Young Geotechnical Engineers Conference (7AYGEC)

Date: 12 - 14 September 2012

Location: The University of Tokushima, Tokushima, Tokushima, Japan

Language: English

Organizer: Japanese Geotechnical Society

- Contact person: Prof. Ryosuke Uzuoka
 - Address: Dept. of Civil and Environmental Engineering, The University of Tokushima

2-1 Minamijyousanjima-cho
770-8506 Tokushima
Tokushima
JAPAN

• Phone: 81-88-656-7345

• E-mail: uzuoka@ce.tokushima-u.ac.jp

Website: sites.google.com/site/7aygec/

ISC'4 - 4th International Conference on Geotechnical and Geophysical Site Characterization

Date: 18 - 21 September 2012

Location: Porto de Galinhas, Pernambuco, Brazil

Language:

Organizer: TC102

• Contact person: Executive Secretary

• Address: Rua Ernesto de Paula Santos 1368, salas 603/604

Boa Viagem; Recife - PE CEP: 51021-330

Brazil

• E-mail: isc-4@factos.com.br

Website: www.isc-4.com/index.php

International Conference on Ground Improvement and Ground Control: Transport Infrastructure Development and Natural Hazards Mitigation

Date: 30 October - 2 November 2012

Location: University of Wollongong, Wollongong, New South Wales, Australia

Language: English

• Organizer: The Centre for Geomechanics and Railway Engineering, University of Wollongong, Australia, and the Australian Geomechanics Society (AGS)

• Contact person: Dr. Jayan Vinod

• Address: Centre for Geomechanics and Railway Engineering, Faculty of Engineering, University of Wollongong, 2522 Wollongong, New South Wales, Australia.

• Phone: 61 02 4221 4089

• Fax: 61 02 4221 3238

• E-mail: icgi_2012@uow.edu.au

• Website: www.icgiwollongong.com

• Deadline for Abstract submission: 1 July 2011

Event Diary (continued)

2013

18th International Conference for Soil Mechanics and Geotechnical Engineering

Date: 1 - 5 September 2013

Location: Paris International Conf. Ctr , Paris, France

Language:

Organizer:

- Contact person: Violaine Gauthier
- Address: Le Public Système,
38, rue Anatole France -
92594 Levallois-Perret Cedex
France
- Phone: 33 1 70 94 65 04
- E-mail: vgauthier@lepublicsysteme.fr
- Website: www.issmge2013.org/

2014

8th European Conference on Numerical Methods in Geotechnical Engineering (NUMGE14)

Date: 18 - 20 June 2014

Location: Delft University of Technology, Delft, Netherlands, The

Language: English

Organizer: Prof. Michael Hicks

- Contact person: Mrs. Hannie Zwiers
- Address: Delft University of Technology,
Faculty of Civil Engineering & Geosciences
Stevinweg 1
2628 CN Delft
The Netherlands
- Phone: +31 15 2788100
- E-mail: info@numge2014.org
- Website: www.numge2014.org

NON-ISSMGE SPONSORED EVENTS

2011

7th Ukrainian Conference on "Soil Mechanics, Geotechnics and Foundation Engineering"

Date: 4 - 7 October 2011

Location: Sanatorium Complex "Magnolia" , Odessa, Ukraine

Language: Ukrainian, Russian

Organizer: UkrSSMGFE

• Contact person: Vladimir Senatorov

• Address: 5/2 Ivan Klimenko str.
03680 Kiev
Ukraine

• Phone: (38044) 249-38-30

• Fax: (38044) 248-89-09

• E-mail: v.senatorov@ndibk.gov.ua

Website: www.niisk.com

International Conference on "Geotechnics for Sustainable Development" - GEOTEC HANOI 2011 -

Date: 6 - 7 October 2011

Location: Fortuna Hotel , Hanoi, Vietnam

Language: English

Organizer: FECON JSC, VSSMGE and GCM

• Contact person: Mr. Ta Xuan Hien

• Address: 15th Floor,
CEO Tower,
Pham Hung Road,
Tu Liem District
Hanoi
Vietnam

• Phone: 84462690481

• Fax: 84462690484

• E-mail: secretariat@geotechn2011.vn

Young Geotechnical Engineers Conference 2011 - South Africa

Date: 31 October - 2 November 2011

Location: Berg and Dal Conference Centre , Kruger National Park, Limpopo, South Africa

Language: English

Organizer: SAICE Geotechnical division

• Contact person: RCA Conference organisers - Yolandé Oosthuizen

• Phone: 27117288173

• E-mail: register@rca.co.za

International Conference on Advances in Geotechnical Engineering (ICAGE 2011)

Date: 7 - 9 November 2011

Location: Burswood Entertainment Complex , Perth, Western Australia, Australia

Language: English

Organizer: Curtin University

Event Diary (continued)

- Contact person: EEC W Pty Ltd, Australia
- Phone: 61-8-9389 1488
- Fax: 61-8-9389 1499
- E-mail: info@eecw.com.au
- Website: www.icage2011.com.au

5th Asia-Pacific Conference on Unsaturated Soils

- Date: 14 - 16 November 2011
 Location: Pattaya , Pattaya, Thailand
 Language: English
 Organizer: Thai Geotechnical Society, KU
- Contact person: Apiniti Jotisankasa
 - Address: Department of Civil Engineering, Kasetsart University
 10900 Jatujak
 Bangkok
 Thailand
 - Phone: 66819043060
 - Fax: 6625792265
 - E-mail: fengatj@ku.ac.th
 - Website: www.unsat.eng.ku.ac.th

Segunda Conferencia Ecuatoriana de Ingeniería Geotécnica y Ambiental para Ingenieros Jóvenes y Estudiantes (SCEIGA)

- Date: 16 - 18 November 2011
 Location: Universidad de Guayaquil , Guayaquil, Guayas, Ecuador
 Language: Español
 Organizer: SEMSIR
- Contact person: Maria Jose Avecillas Andrade
 - Address: Laboratorio Ruffilli - Universidad de Guayaquil,
 Av. Kennedy.
 9176 Guayaquil
 Guayas
 Ecuador
 - Phone: 59384862808
 - Fax: 59342286290
 - E-mail: aniversariosemsir50@gmail.com
 - Website: semsir.blogspot.com

GEOMAT 2011-MIE, JAPAN

- Date: 21 - 23 November 2011
 Language: English
 Organizer: Glorious International GEOMAT
- Contact person: Dr. Zakaria Hossain

- Address: Assoc. Prof., Graduate School of Bioresources,
 Mie University
 514-8507 Tsu
 Mie
 Japan
- Phone: 81592319578
- Fax: 81592319591
- E-mail: zakaria@bio.mie-u.ac.jp
- Website: gipremi.webs.com/

Geotechnical Engineering Conferences of Torino (XXIII Edition) / Conferenze di Geotecnica di Torino (XXIII CICLO)

- Date: 23 - 24 November 2011
 Location: Politecnico di Torino , Torino, Italy
 Language: Italian / English
 Organizer: Politecnico di Torino
- Contact person: AXEA Conferences and Events
 - Address: Via Caboto 44
 10129 Torino
 Italy
 - Phone: 39011591871
 - Fax: 39011590833
 - E-mail: info@cgttorino.org
 - Website: www.cgttorino.org/

International Symposium on Sustainable Geosynthetics & Green Technology for Climate Change (SGCC2011)

- Date: 7 - 8 December 2011
 Location: Grand Centara Convention Hotel , Bangkok, Thailand
 Language: English
 Organizer: ACSIG, SEAGS
- Contact person: SGCC2011 Secretariat
 - Address: c/o Asian Center for Soil Improvement and Geosynthetics (ACSIG); GTE/SET,
 Asian Institute of Technology
 PO Box 4,
 Klong Luang,
 Pathumthani 12120
 Thailand
 - Phone: 66-2 524 5523
 - Fax: 66-2 524 6050
 - E-mail: climatechange@ait.ac.th or igs-thailand@ait.ac.th
 - Website: www.set.ait.ac.th/acsig/sgcc2011/home.htm

Event Diary (continued)

2012

4th International Conference on Grouting and Deep Mixing

Date: 15 - 18 February 2012

Location: Marriott New Orleans , New Orleans, LA, United States

Language: English

Organizer: ICOG and DFI

- Contact person: Theresa Rappaport
- Address: DFI; 326 Lafayette Avenue
07506 Hawthorne
NJ
USA

• Phone: 9734234030

• Fax: 9734234031

• E-mail: trappaport@dfi.org

Website: www.grout2012.org

Geo-Congress 2012

Date: 22 - 25 March 2012

Location: Oakland, California, United States

Language: English

Organizer: Geo-Institute of ASCE

- Contact person: Rob Schweinfurth
- Address: 1801 Alexander Bell Drive
Reston, VA 20191
United States

• Phone: 1.703.295.6015

• E-mail: rschweinfurth@asce.org

Website: www.geocongress2012.org

NGM 2012. 16th Nordic Geotechnical Meeting

Date: 9 - 12 May 2012

Location: Tivoli Congress Center, Copenhagen, Denmark

Language: English

Organizer: Danish Geotechnical Society

- Contact person: Morten Jorgensen
- Address: Sortemosevej 2
DK-3450 Allerod
Copenhagen
Denmark

• Phone: +45 4810 4207 ; +45 4810 4207

• Fax: +45 4810 4300

• E-mail: moj@niras.dk

Website: www.ngm2012.dk

11th International & 2nd North American Symposium on Landslides

Date: 3 - 8 June 2012

Location: Fairmont Banff Springs Hotel , Banff, Alberta, Canada

Language:

Organizer: CGS, AEG, JTC1

- Contact person: Wayne Gibson, P.Eng. Conference Manager
- Address: c/o Gibson Group Association Management,

8828 Pigott Road,
V7A 2C4 Richmond
BC
Canada

• Phone: 1 (604) 241-1297

• Fax: 1 (604) 241-1399

• E-mail: info@isl-nasl2012.ca

Website: www.isl-nasl2012.ca/index.php?lang=en

34th International Geological Congress (34th IGC)

Date: 5 - 10 August 2012

Location: Convention and Exhibition Ctr , Brisbane, Queensland, Australia

Language: English

Organizer: IUGS

- Contact person: For full contact details see - <http://www.34igc.org/congress-manager.php>

• Address: 34th IGC, PO Box 177
Redhill
Queensland 4059
Australia

• Phone: 61 7 3368 2644

• Fax: 61 7 3369 3731

• E-mail: info@34igc.org

Website: www.34igc.org/index.php

IS-Kanazawa 2012, The 9th International Conference on Testing and Design Methods for Deep Foundations

Date: 18 - 20 September 2012

Location: Kanazawa Bunka Hall , Kanazawa, Ishikawa, Japan

Language: English

Organizer: Japanese Geotechnical Society

- Contact person: Associate Prof. Shun-ichi Kobayashi

Event Diary (continued)

- Address: Kanazawa University
920-1192 Kanazawa
Ishikawa
Japan
- E-mail: office@is-kanazawa2012.jp
Website: is-kanazawa2012.jp

- Contact person: GA2012 Secretariat
- Phone: +66-2-524-5523
- Fax: +66-2-524-6050
- E-mail: igs-thailand@ait.ac.th or
acsig@ait.ac.th
Website: www.set.ait.ac.th/acsig/GA2012/

GA2012 - Geosynthetics Asia 2012 - 5th Asian Regional Conference on Geosynthetics
Date: 10 - 14 December 2012
Location: Centara Grand, Bangkok Conv Ct ,
Bangkok, Thailand
Language: English
Organizer: IGS-Thailand

FOR FURTHER DETAILS, PLEASE REFER TO THE
ISSMGE WEBSITE -
<http://addon.webforum.com/issmge/index.asp>

Corporate Associates



Acciona Infraestructuras SA
Avenida de Europa 18
Parque Empresarial La Moraleja
28108 ALCOBENDAS MADRID, SPAIN



S.N. Apageo S.A.S.
ZA de Gomberville
BP 35 - 78114 MAGNY LES HAMEAUX
FRANCE



Bauer Maschinen GmbH
Wittelsbacherstr. 5
86529 Schrobenhausen
GERMANY



Fugro N.V.
PO Box 41
2260 AA Leidschendam, NETHERLANDS



Deltares
PO Box 177
2600 AB Delft, NETHERLANDS



Georeconstruction Engineering Co
Izmaylovsky Prosp. 4., of. 414
Saint Petersburg, RUSSIA



Golder Associates Inc
1000, 940-6th Avenue S.W.
Calgary, Alberta
CANADA T2P 3T1



Jan de Nul N.V.
Tragel 60, B-9308 Hofstade-Aalst
BELGIUM



Kiso-Jiban Consultants Co., Ltd.
Nittetsu ND Tower 12 Fl.
1-5-7 Kameido, Koto-ku,
Tokyo, Japan 136-8577



NAUE GmbH Co KG
Gewerbstrasse 2
32339 Espelkamp-Fiestel
GERMANY



Norwegian Geotechnical Institute
P.O. Box 3930 Ullevaal Stadion
N-0806 OSLO
NORWAY



SOLETANCHE BACHY SA
133 boulevard National, 92500 Rueil-
Malmaison, FRANCE



Tensar International Ltd
Cunningham Court
Shadsworth Business Park
Blackburn, BB1 2QX, UK



Terre Armée
Sustainable Technology
1 bis rue du Petit Clamart
Bâtiment C BP 135 78148 Velizy CEDEX
FRANCE



TRACTEBEL DEVELOPMENT ENGINEERING S.A.
Tractebel Development Engineering SA
Transportation Division
Geotechnology Section
7 Avenue Ariane B-1200, BRUSSELS
BELGIUM



Bentley Systems Inc.
Corporate Headquarters
685 Stockton Drive 7710,
Exton PA 19341, United States



Geoteknik SA
Dolapdere cad. 255, Şişli - İstanbul 80230
TURKEY



Huesker Synthetic GmbH
Fabrikstrasse 13-15
48712 Gescher
Germany



Zetas Zemin Teknolojisi AS
Merkez Mah. Resadiye Cad. No. 69/A
Alemdag, Umraniye
Istanbul, 34794 TURKEY



Siemens Energy
Kaiserleistrasse 10
63067 Offenbach
GERMANY



International I.G.M. s.a.r.l.
P.O.Box: 166129 Achrafieh
Beirut, LEBANON

Corporate Associates (continued)



TenCate Geosynthetics
9, rue Marcel Paul
B.P. 40080
95873 Bezons Cedex
FRANCE



AECOM
AECOM Asia Company Ltd
Attn: Dr Axel KL Ng
8/F, Tower 2, Grand Central Plaza
138 Shatin Rural Committee Road
Shatin, NT
Hong Kong



Construtora Norberto Odebrecht
Av. Rebouças, 3970 - 31º andar
Pinheiros CEP-05402-600
São Paulo/SP
BRAZIL



NOVAJECNA
SOLUÇÕES EM JET GROUTING
Novatecna Consolidações e Construções
S/A
Attn: Giorgio Guatteri Rua Banibás 142 São
Paulo/SP
Brasil



Coffey Geotechnics
8/12 Mars Road
Lane Cove West
NSW, 2066
AUSTRALIA



Tecnogeo Engenharia e Fundações Ltda
Av. Eliseu de Almeida nº 1415 - Butantã
São Paulo/SP - 05533-000
Brazil



Brasfond
Brasfond Fundacoes Especiais SA
Rua Olimpíadas, 200, 13º Andar
Cep: 04551-000 Vila Olímpia
São Paulo / SP
BRAZIL



A.P. van den Berg
Zzerweg 4
8445 PK Heerenveen
The Netherlands



Huesker Ltda
Attn: Flavio Teixeira Montez
Rua Romualdo Davoli, 375
Cond. El Dorado
CEP 12238.577 São José dos Campos SP
BRAZIL

Foundation Donors

The Foundation of the International Society for Soil Mechanics and Geotechnical Engineering (ISSMGE) was created to provide financial help to geo-engineers throughout the world who wish to further their geo-engineering knowledge and enhance their practice through various activities which they could not otherwise afford. These activities include attending conferences, participating in continuing education events, purchasing geotechnical reference books and manuals.

- **Diamond: \$50,000 and above**

- a. ISSMGE-2010



<http://www.issmge.org/>

- **Platinum: \$25,000 to \$49,999**

- a. Prof. Jean-Louis and Mrs. Janet Briaud
<https://www.briaud.com> and
<http://ceprofs.tamu.edu/briaud/>



- **Gold: \$10,000 to \$24,999**

- a. International I-G-M
<http://www.i-igm.net/>



- b. Geo-Institute of ASCE
<http://content.geoinstitute.org/>



- c. Japanese Geotechnical Society
<http://www.jiban.or.jp/>



- **Silver: \$1,000 to \$9,999**

- a. Prof. John Schmertmann
- b. Deep Foundation Institute
www.dfi.org



- c. Yonsei University
<http://civil.yonsei.ac.kr>



- d. Korean Geotechnical Society
www.kgshome.or.kr



- e. CalGeo - The California Geotechnical Engineering Association
www.calgeo.org



Foundation Donors (continued)

f. Prof. Ikuo Towhata



[http://geotle.t.u-tokyo.ac.jp/
towhata@geot.t.u-tokyo.ac.jp](http://geotle.t.u-tokyo.ac.jp/towhata@geot.t.u-tokyo.ac.jp)

- **Bronze: \$0 to \$999**

a. Prof. Mehmet T. Tümay

http://www.coe.lsu.edu/administration_tumay.html
mtumay@eng.lsu.edu

b. Nagadi Consultants (P) Ltd



www.nagadi.co.in

Message from ISSMGE Foundation

The ISSMGE Foundation is requesting donations from industries as well as individuals. The donated fund is spent to financially support young promising geotechnicians who intend to further their geotechnical engineering knowledge and enhance their practice through various activities which they could not otherwise afford. These activities include attending conferences, participating in continuing education events, purchasing geotechnical reference books and manuals. All our ISSMGE members can contribute to the ISSMGE Foundation by sending President Briaud an email (briaud@tamu.edu). If you wish to apply for a grant, on the other hand, you can download the form

<http://www.issmge.org/web/page.aspx?refid=563>

fill it, and send it to the ISSMGE Secretary General Professor Neil Taylor at secretary.general@issmge.org. A request for a grant above \$2000 is unlikely to be successful. Smaller requests especially with indication of cost sharing have the best chance. Please note deadlines for submission of applications (1st January, and 1 July), for decisions by the Committee by February 1 and August 1 of each year. Applicants will be notified at that time.